

Glue Page



creating better environments

**florbo**  
FLOORING SYSTEMS

# showtime®

## Needlefelt Showtime

**The Showtime collection has been tailored to meet the demanding needs of the hotel and leisure sector.**

The specially developed needlefelt construction combines performance, comfort, ease of maintenance and improved acoustic performance, whilst the colour palette with co-ordinating print options complement today's hospitality interiors.

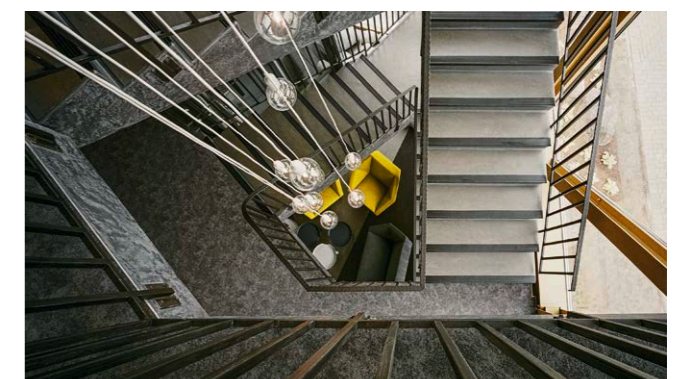
All 17 colours and 20 co-ordinating graphic options in 5 designs are readily available for immediate installation, and all are made with over 50% recycled content for reduced environmental impact.

### Showtime graphic

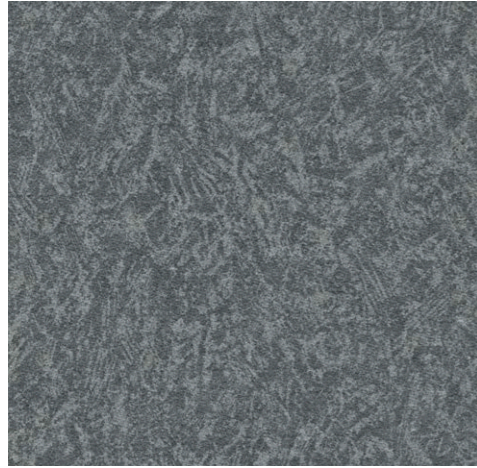
5 tonal graphics, designed to complement hospitality styles, make up Showtime graphic, and each are readily available in a selection of Showtime base colours, making 20 graphic options available for immediate installation.

### Showtime colour

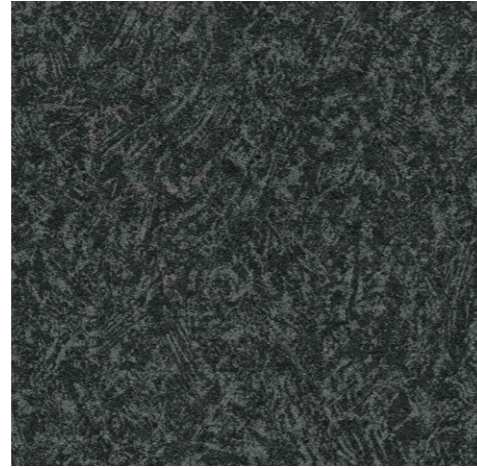
Made using polyamide fibres, 17 options in neutrals and tonal accents make up the unique Showtime colour palette; designed to harmonise with today's hospitality interior schemes.



# showtime® graphic Loft



946261 | platinum LRV 15%



946262 | slate LRV 7%



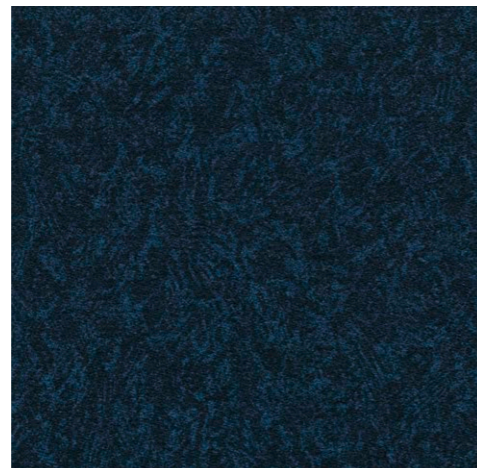
946273 | sandstone LRV 5%



946272 | steel LRV 3%



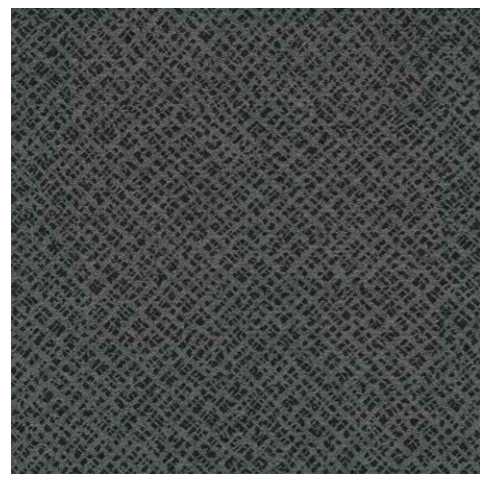
946286 | ruby LRV 4%



946267 | nautical LRV 3%

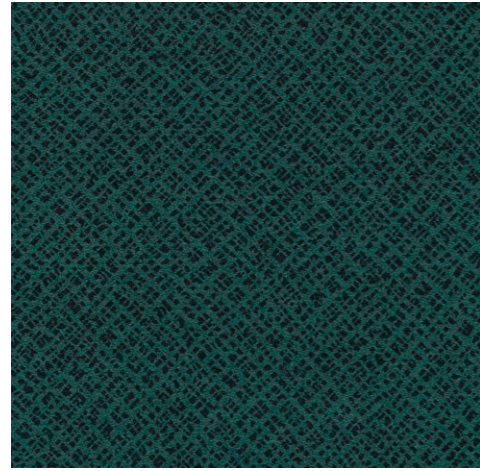


# showtime® graphic Heritage 05



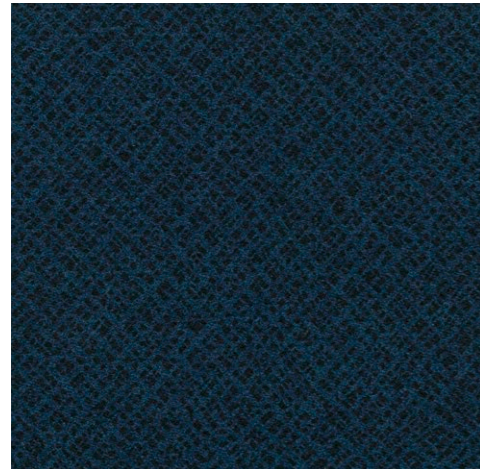
930262 | slate

LRV 8%



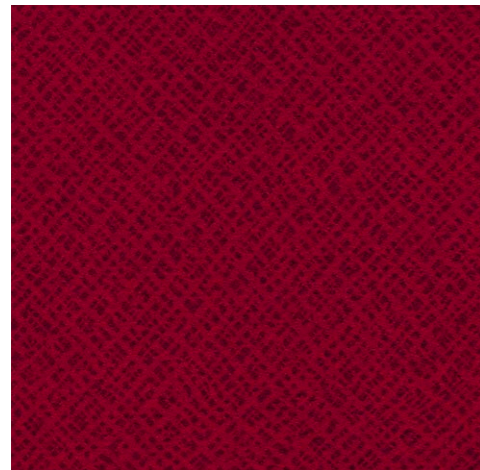
930288 | jade

LRV 5%



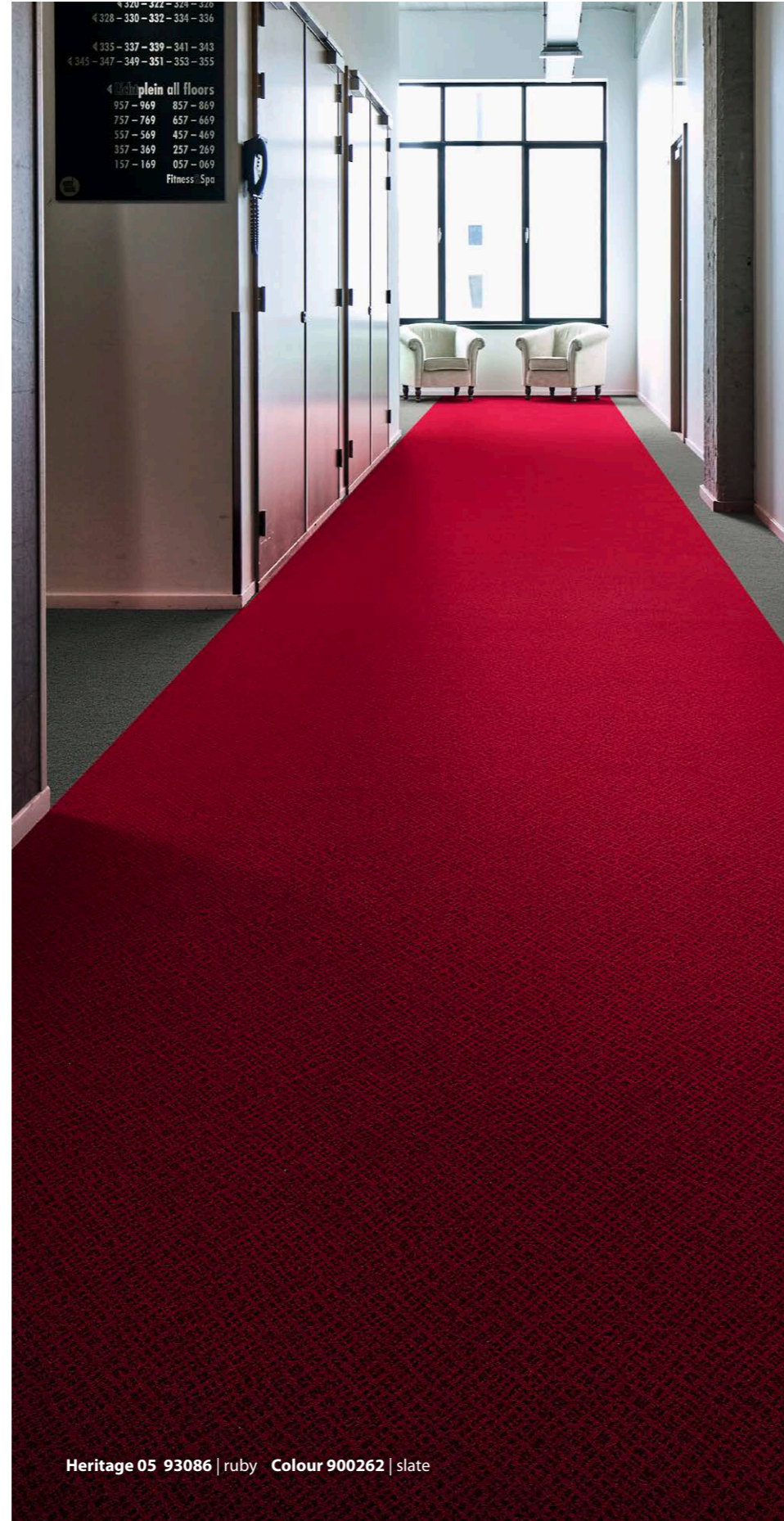
930267 | nautical

LRV 3%



930286 | ruby

LRV 4%

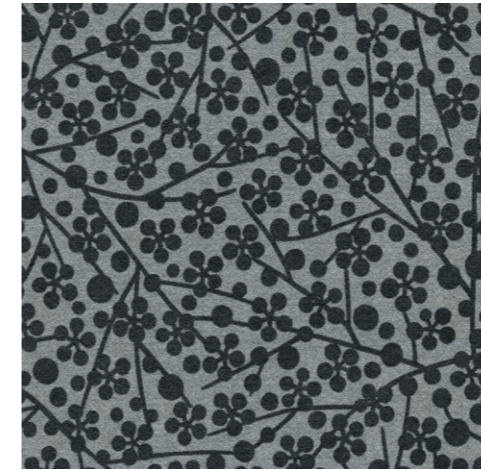


Heritage 05 93086 | ruby Colour 900262 | slate

# showtime® graphic Ecosystem 07



Ecosystem 07 936288 | jade 936268 | celadon



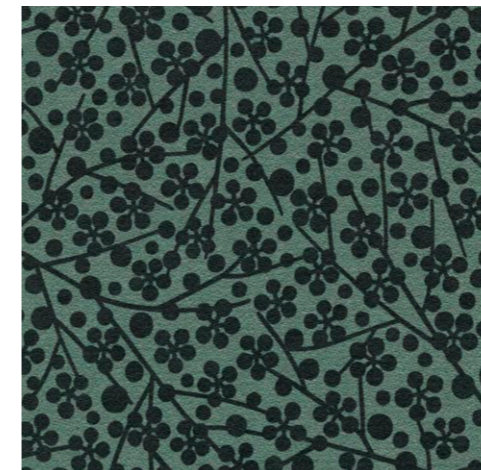
936261 | platinum

LRV 12%



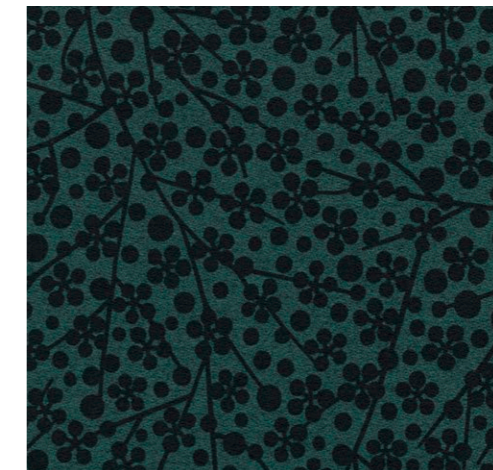
936273 | sandstone

LRV 8%



936268 | celadon

LRV 10%



936288 | jade

LRV 4%

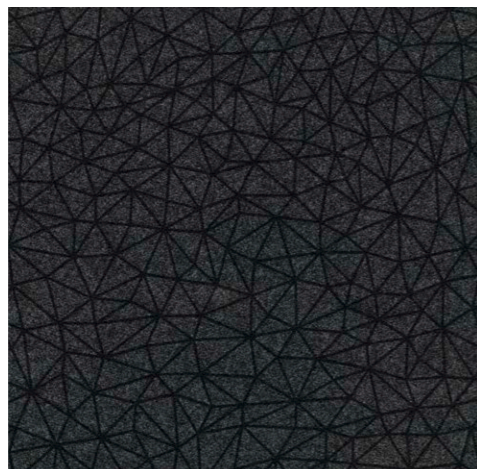


Wonderlab 06 943267 | nautical Colour 900277 | indigo



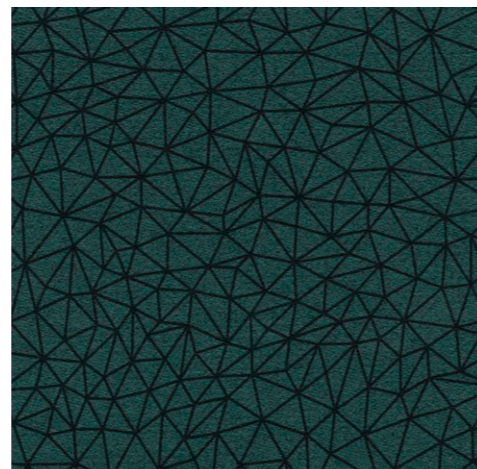
Wonderlab 07 944261 | platinum

## showtime® graphic Wonderlab 06



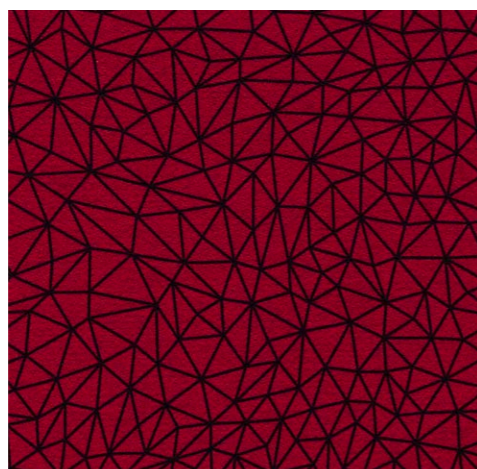
943272 | steel

LRV 4%



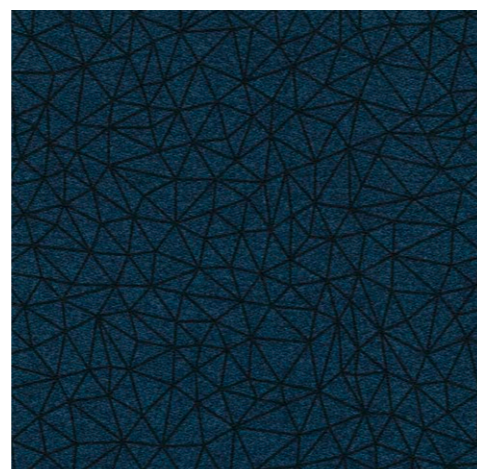
943288 | jade

LRV 5%



943286 | ruby

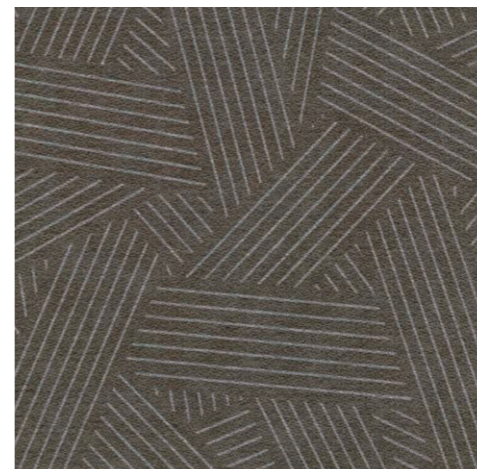
LRV 4%



943267 | nautical

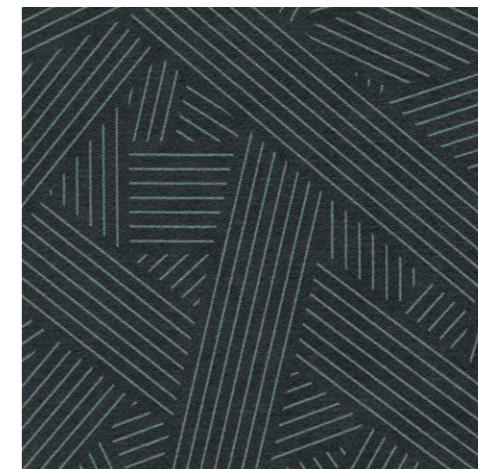
LRV 3%

## showtime® graphic Wonderlab 07



944261 | platinum

LRV 12%



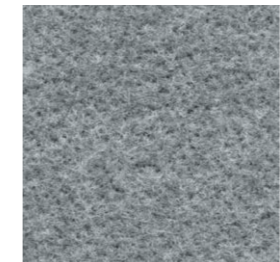
944268 | celadon

LRV 6%



## showtime® colour

17 options in neutrals and tonal accents make up the unique Showtime colour palette; designed to harmonise with today's hospitality interior schemes. Use to complement Showtime graphic, or on its own for way finding or combine colours to create design statements.



900261 | platinum LRV 22%



900263 | sable LRV 21%



900268 | celadon LRV 16%



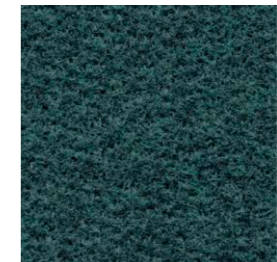
900266 | rose LRV 16%



900262 | slate LRV 11%



900273 | sandstone LRV 13%



900288 | jade LRV 6%



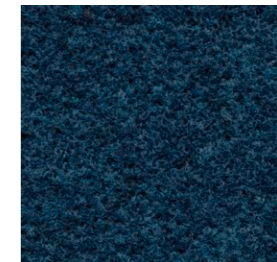
900286 | ruby LRV 5%



900272 | steel LRV 5%



900274 | espresso LRV 7%



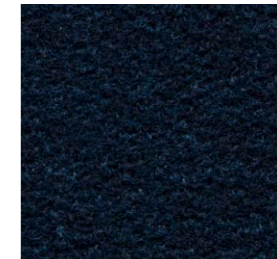
900267 | nautical LRV 4%



900265 | sunshine LRV 25%



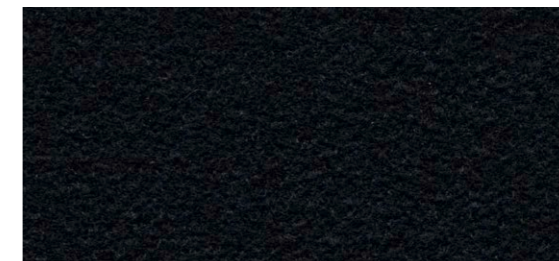
900269 | carbon LRV 3%



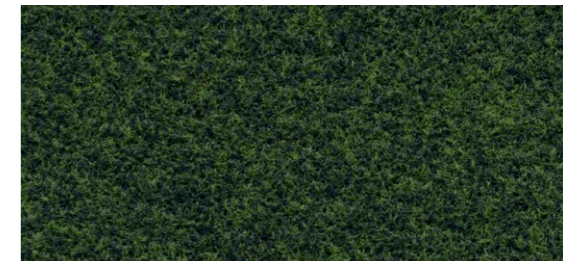
900277 | indigo LRV 2%



900276 | terracotta LRV 8%



900279 | noir LRV 2%



900278 | pastoral LRV 5%



Loft 946261 | platinum Colour 900276 | terracotta

## Technical specifications

Showtime meets the requirements of EN1307

		Showtime Colour	Showtime Graphic	
	Total thickness	ISO 1765	4.9 mm	4.9 mm
	Wear layer thickness	ISO 1766	1.6 mm	1.6 mm
	Total weight	ISO 8543	1150 g/m <sup>2</sup>	1150 g/m <sup>2</sup>
	Collection size		17	20
	Commercial use	EN ISO 10874	Class 32	Class 32
	Pile composition		100% polyamide	100% polyamide
	Pile weight	ISO 8543	280 g/m <sup>2</sup>	280 g/m <sup>2</sup>
	Backing		100% recycled polyester	100% recycled polyester
	Roll width		200 cm	200 cm
	Roll length		± 40 m	± 40 m
	Impact noise reduction	EN ISO 717-2	20 dB	20 dB
	Sound absorption	EN ISO 354	$\alpha_w = 0,15$ (H)	$\alpha_w = 0,15$ (H)
	Castor chair continuous use	ISO 4918	$r \geq 2,4$	$r \geq 2,4$
	Colour fastness to light	ISO 105/B02	$\geq 6$	$\geq 6$
	Colour fastness to water	ISO 105/E01	$\geq 3-4$	$\geq 3-4$
	Colour fastness to rubbing wet	ISO 105-X12	$\geq 3$	$\geq 3$
	Colour fastness to Rubbing dry	ISO 105-X12	$\geq 3-4$	$\geq 3-4$
	Indoor air emissions: TVOC after 28 days	EN 16516	$\leq 0,1$ mg/m <sup>3</sup>	$\leq 0,1$ mg/m <sup>3</sup>
	Recycled content		Needlefelt sheet are manufactured with at least 50% recycled content by weight	
	Installation method		↑↑	↑↓

Showtime meets the requirements of EN 14041

		EN 14041:2004	0300721-DoP-010	0300721-DoP-010
	Reaction to fire	EN 13501-1	C <sub>s</sub> -s1, G, NCS	C <sub>s</sub> -s1, G, NCS
	Slip resistance	EN 13893	$\mu > 0.30$	$\mu > 0.30$
	Thermal conductivity	EN 12524	0.06 W/mK	0.06 W/mK
	Body voltage	ISO 6356	< 2.0 kV	< 2.0 kV



All Forbo Flooring Systems' sales organisations worldwide have a certified Quality Management System in accordance with ISO 9001. All Forbo Flooring Systems' manufacturing operations have a certified Environmental Management System in accordance with ISO 14001. The Life Cycle Assessment (LCA) of Forbo Flooring Systems' products is documented in individual Environmental Product Declarations (EPD's) which can be found on all of our websites.

# BENEFITS OF FORBO FLOORING NEEDLEFELT SHOWTIME

### Practical

- Robust Needlefelt construction in polyamide fibres ensures a high quality and long-lasting appearance.
- 37 co-ordinating colour and design options all available for immediate installation.

### Comfortable

- Enhanced acoustic value of 20 dB for minimal noise transmission.
- Constructed using polyamide fine fibres for increased underfoot comfort.

### Environmental

- Our Showtime backing consists of 100% recycled polyester.
- The full collection contains over 50% recycled content.

# OTHER NEEDLEFELT FLOORING

## Reliable, recognizable and practical

The robust, hard-wearing properties of our needlefelt floors make it ideal for installations that meet high traffic or where chairs with castors are likely to be used, such as in offices, leisure or retail establishments.

The high quality of Forbo Flooring Needlefelt is based on over 40 years' experience in the manufacture and supply of this hard-wearing flooring. It is available in 3 qualities designed to meet different requirements.



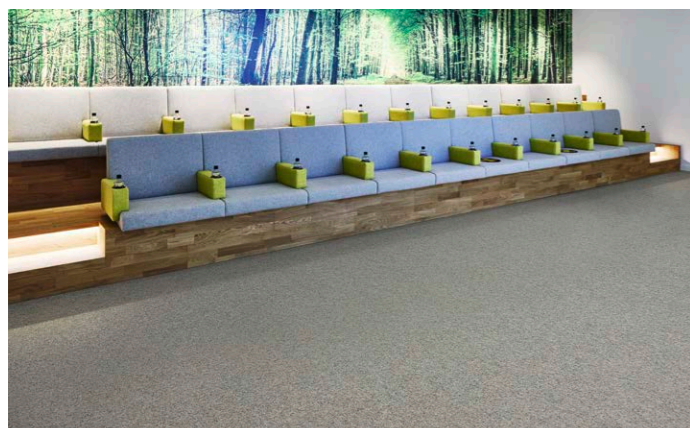
### Forte

Our premium needlefelt flooring range, offering the maximum feeling of comfort in our heaviest weights, comes in sheet and modular (Tile) options. The very dense texture, with more than 3 million needle punches per m2, guarantees a combination of attractive looks and hard-wearing performance for use in highly-frequented areas. Forte Sheet is available in all 25 colours, a palette of commercial neutral colours and trend led highlights. Out of these 25 colours, 12 are available as tile.



### Markant

A high-quality, coarse-texture needlefelt flooring made of 100% polyamide fibres, equipped with all the characteristics required for hard-wearing performance in frequently used places. A modern print "box" design using Markant sheet as the basis, Markant Graphic City provides an easy and affordable solution to adding design interest to commercial spaces.



### Akzent

The introduction needlefelt sheet quality, Akzent is available in a blend of 80% polyamide and 20% polypropylene fibres, and is designed as a practical, value solution for hard wearing commercial flooring.

# OTHER FORBO FLOORING TEXTILES



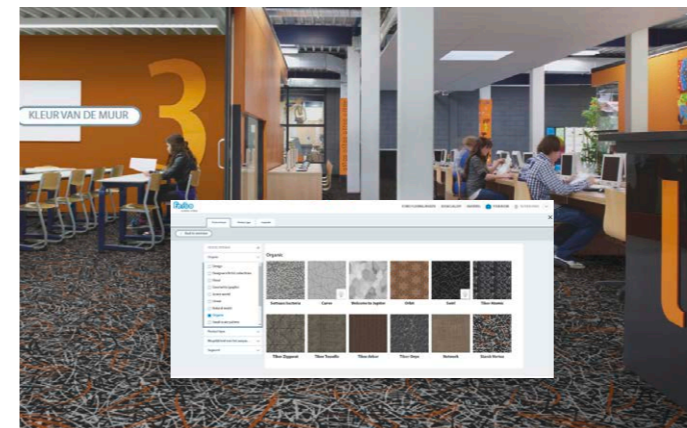
### Flotex sheet, tile and planks

Flotex is a unique textile floor covering that combines the hard wearing and durable characteristics of a resilient floor with the quality, warmth and comfort of a carpet. Flotex is a strong and hygienic floor, and being completely waterproof, it is also the only truly washable textile floor. Flotex comes in sheet, tiles and planks.



### Tessera carpet tiles

Today's modern office environments are designed for flexibility to accommodate frequent layout changes. A modular floor can be quickly adapted to new requirements thereby reducing the cost of reorganisation. Tessera tufted carpet tiles are renowned for their aesthetic styling and outstanding performance in the most demanding heavy traffic environments. We offer Tessera carpet tiles in different constructions; loop pile, cut pile, cut & loop pile and microtuft.



### DIGITAL PRINT FLOTEX

Forbo's advanced digital printing technology enables striking floor visuals that cannot be achieved with conventional print techniques. It offers you the possibility to create your own unique Flotex floor. Have a look on [www.flotexvision.com](http://www.flotexvision.com) to get inspired.



### ENTRANCE FLOORING

The first steps in protecting your building. By stopping up to 95% of walked in dirt and moisture, our Coral entrance floors can prolong the life of your floor as well as greatly reduce cleaning costs and the risk for slipping. Forbo Coral offers you the best entrance flooring solution for your entrance area.