

U-Panels

Translucent U-Panels made of polycarbonate
Product range

U-Panels product range

RODECA translucent U-panels, made of high-quality polycarbonate are available in different thicknesses. Our translucent U-panels are produced with a coextruded UV protective layer on the outside. We grant a 10-year warranty against aging and yellowing in accordance with our written guarantee.

Thickness [mm]	U-Panel	U_p -value [W/m ² K]	Weight [kg/m ²]	Building width [mm]	Fire classification EN 13501
10	PC 2600-10-4-U	approx. 2.6 W/m ² K	approx. 2.3 kg/m ²	600 mm	B-s1, d0
16	PC 2630-16-6-U	approx. 1.9 W/m ² K	approx. 3.2 kg/m ²	630 mm	B-s1, d0
	PC 2630-16-6-U HD	approx. 1.9 W/m ² K	approx. 3.6 kg/m ²	630 mm	B-s1, d0
20	PC 2630-20-6-U	approx. 1.7 W/m ² K	approx. 3.4 kg/m ²	630 mm	B-s1, d0
25	PC 2630-25-6-U	approx. 1.6 W/m ² K	approx. 3.6 kg/m ²	630 mm	B-s1, d0
	PC 2630-25-6-U HD	approx. 1.6 W/m ² K	approx. 5.0 kg/m ²	630 mm	B-s1, d0
40	PC 2600-40-7	approx. 1.2 W/m ² K	approx. 4.6 kg/m ²	605 mm	B-s1, d0

Production tolerances s. general information



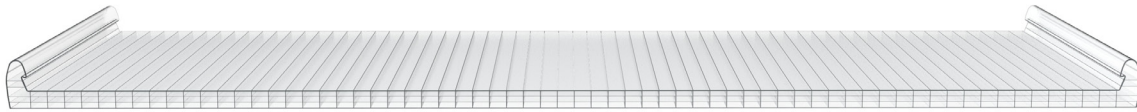
Advantages

- polycarbonate is a crystal clear, high impact thermoplastic
- temperature resistance from von -40 to +115°C, temporarily up to 130°C
- impact resistance virtually unchanged within these temperatures
- good long term performance through UV protection
- 10 years warranty against yellowing - ageing - hail stone
- translucent with excellent thermal properties

Versions

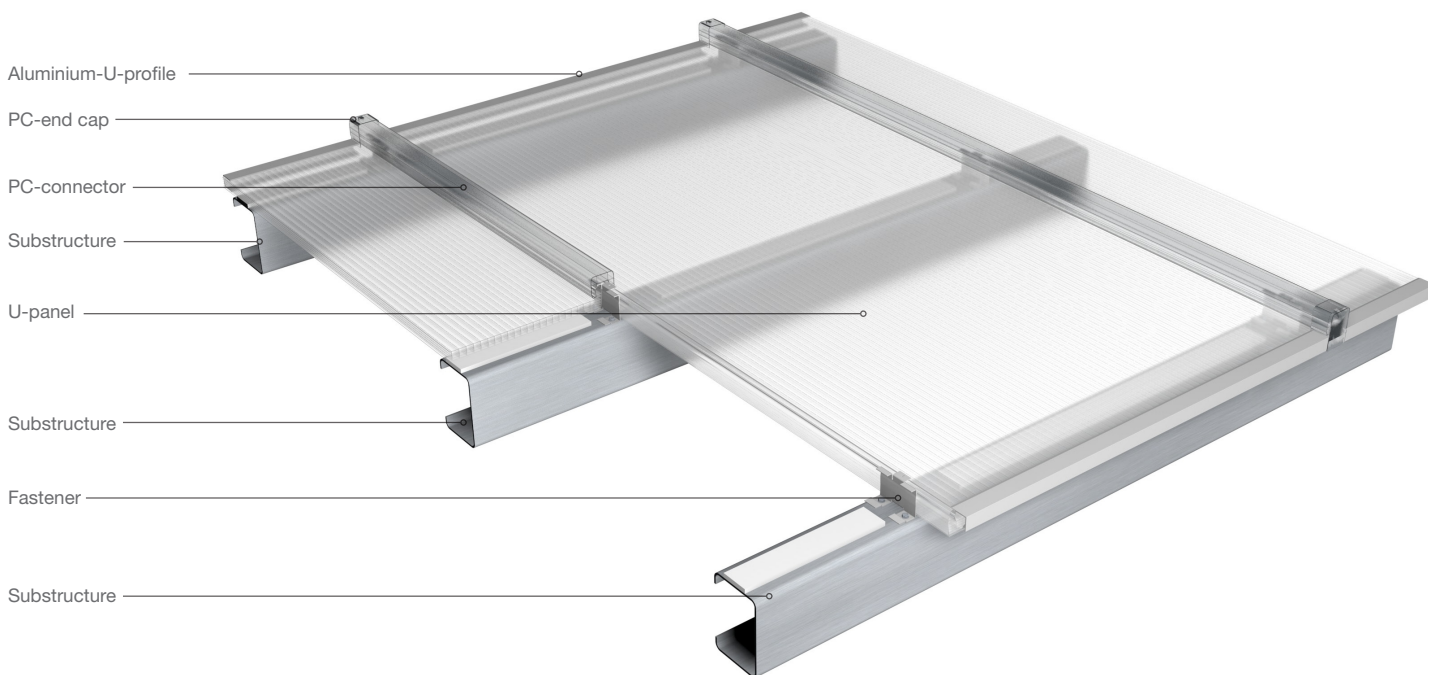
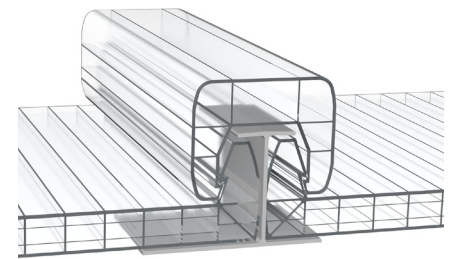
- crystal, opal
- Color
- DuoColor

PC 2600-10-4-U



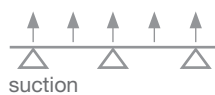
Product properties

Building width	600 mm (+6 / -2 mm)
Thickness	10 mm (+/- 0.5 mm)
Weight	approx. 2.3 kg/m ²
Structure	4 layers / 3 chambers
U _p -value	approx. 2.6 W/m ² K
Fire classification	B-s1, d0 according to EN 13501
Light transmission	crystal approx. 70 %* / opal approx. 55 %*
Versions	crystal / opal / Color** on request
Minimum radius for bending	min. 3.00 m



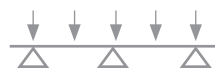
Load resistance

The information on load resistance relates to the failure of the panels or accessories.
The values do not contain any safety factors and do not replace any country-specific and building law certificates.



suction

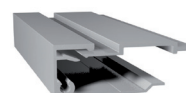
span	load
1.0 m	1.0 kN/m ²



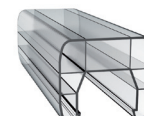
pressure

1.0 m	1.5 kN/m ²
-------	-----------------------

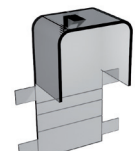
Accessories



side profile
aluminium-U-profile
461040 + 492001



polycarbonate
connector
380061



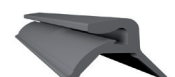
polycarbonate
end cap
395008



front end
aluminium-U-profile
461011

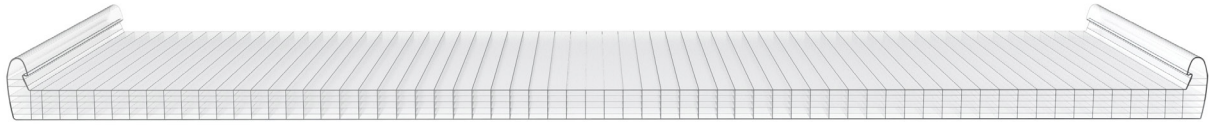


fastener
59401001



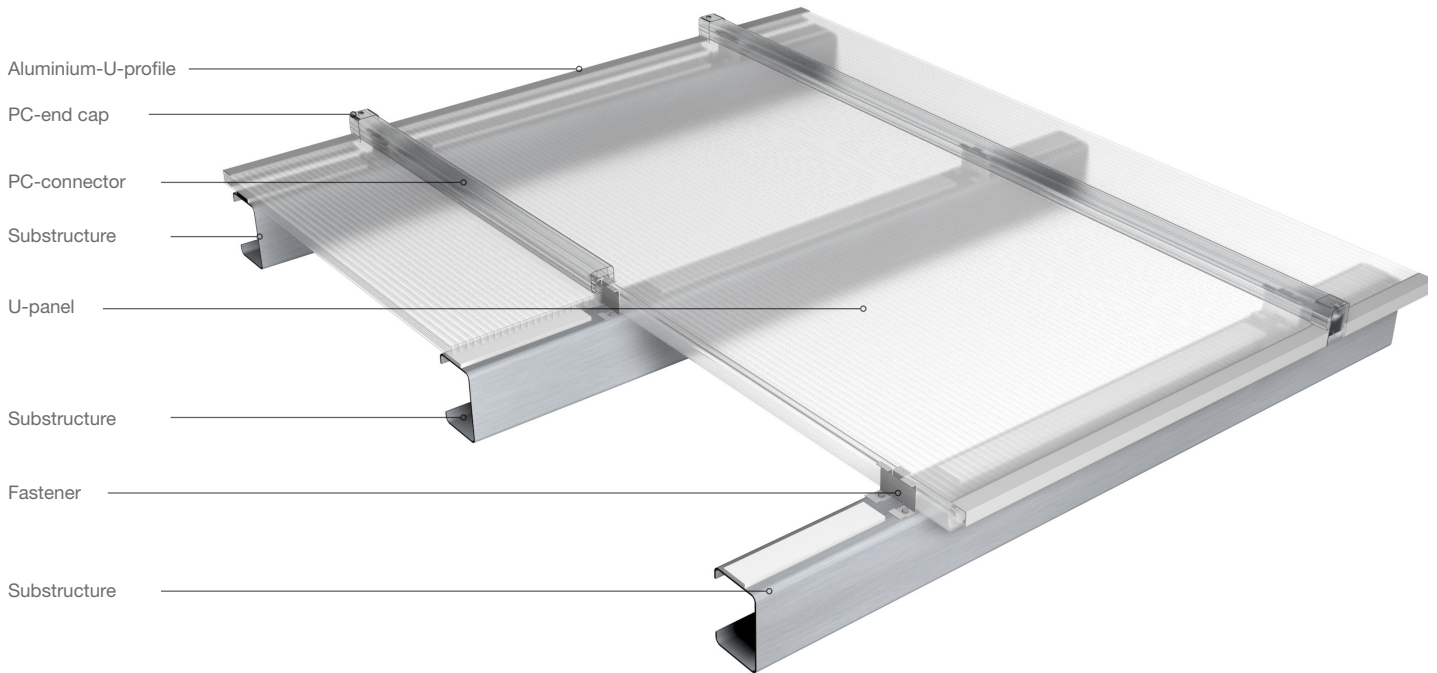
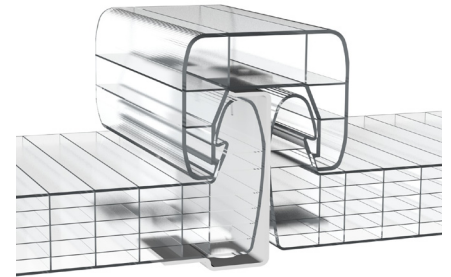
gasket for side profile
902901

PC 2630-16-6-U



Product properties

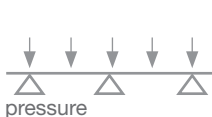
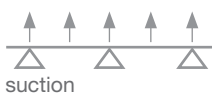
Building width	630 mm (+6 / -2 mm)
Thickness	16 mm (+/- 0.5 mm)
Weight	approx. 3.2 kg/m ²
Structure	6 layers / 5 chambers
U _p -value	approx. 1.9 W/m ² K
Fire classification	B-s1, d0 according to EN 13501
Light transmission	crystal approx. 61 %* / opal approx. 33 %*
Versions	crystal / opal / Color / DuoColor** on request
Minimum radius for bending	min. 3.50 m



Load resistance

The information on load resistance relates to the failure of the panels or accessories.

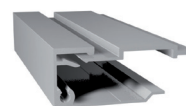
The values do not contain any safety factors and do not replace any country-specific and building law certificates.



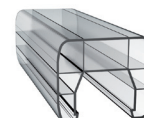
span	load
1.0 m	1.7 kN/m ²
1.5 m	1.4 kN/m ²

1.0 m	2.4 kN/m ²
1.5 m	1.6 kN/m ²

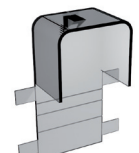
Accessories



side profile aluminium-U-profile
461640 + 492001



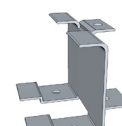
polycarbonate connector
380062



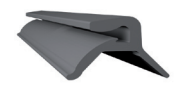
polycarbonate end cap
395008



front end aluminium-U-profile
461611

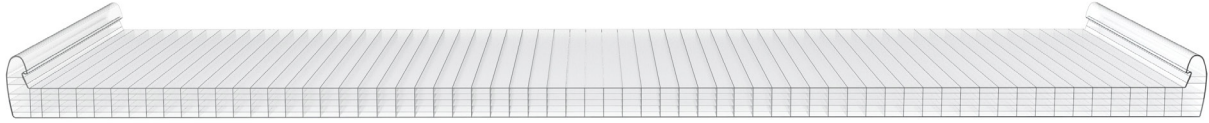


fastener
494016N



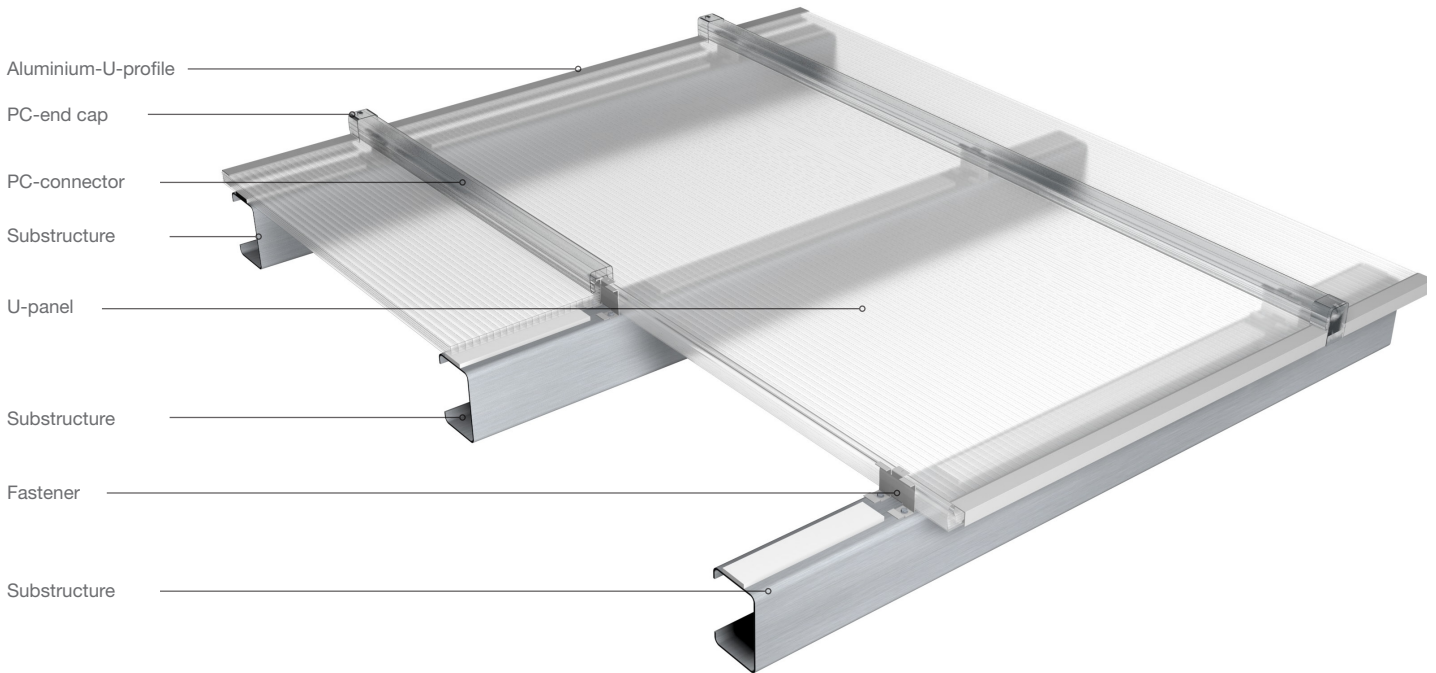
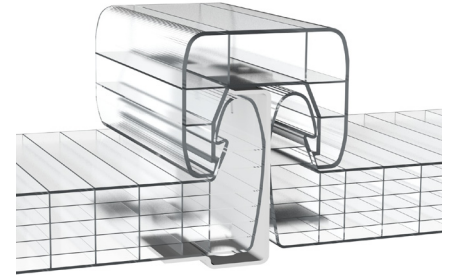
gasket for side profile
902901

PC 2630-16-6-U HD



Product properties

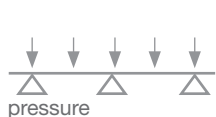
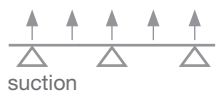
Building width	630 mm (+6 / -2 mm)
Thickness	16 mm (+/- 0.5 mm)
Weight	approx. 3.6 kg/m ²
Structure	6 layers / 5 chambers
U _p -value	approx. 1.9 W/m ² K
Fire classification	B-s1, d0 according to EN 13501
Light transmission	crystal approx. 61 %* / opal approx. 33 %*
Versions	crystal / opal / Color / DuoColor** on request
Minimum radius for bending	min. 6.00 m



Load resistance

The information on load resistance relates to the failure of the panels or accessories.

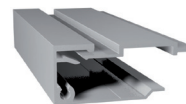
The values do not contain any safety factors and do not replace any country-specific and building law certificates.



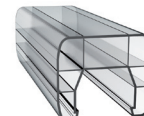
span	load
1.0 m	1.7 kN/m ²
1.5 m	1.4 kN/m ²

1.0 m	4.0 kN/m ²
1.5 m	3.2 kN/m ²

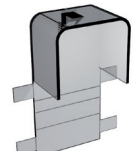
Accessories



side profile aluminium-U-profile
461640 + 492001



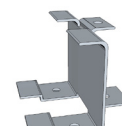
polycarbonate connector
380062



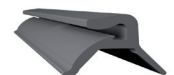
polycarbonate end cap
395008



front end aluminium-U-profile
461611

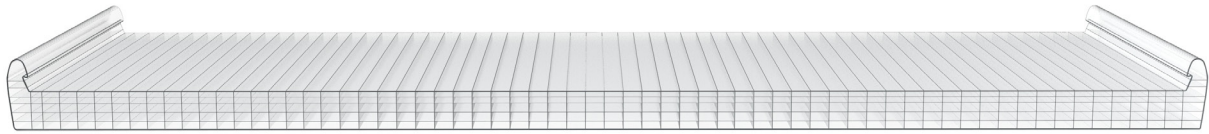


fastener
494016N



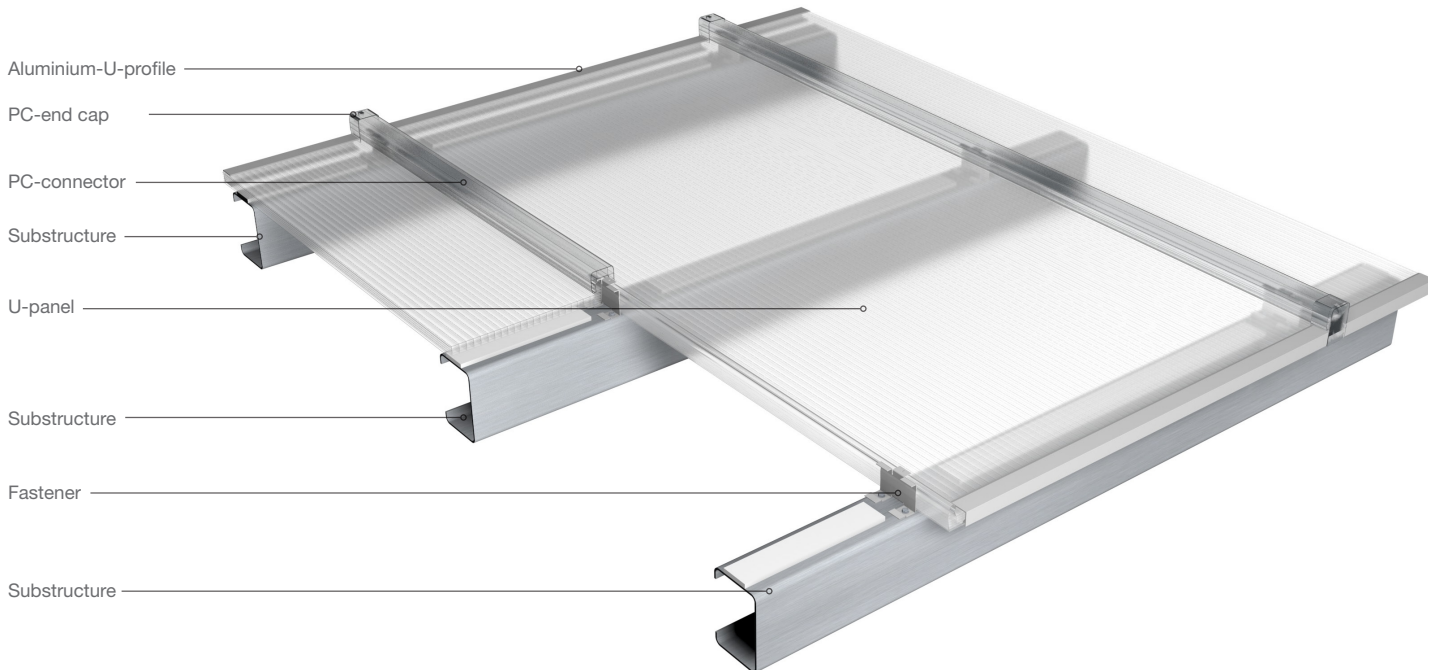
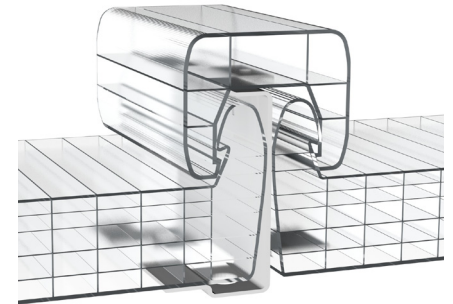
gasket for side profile
902901

PC 2630-20-6-U



Product properties

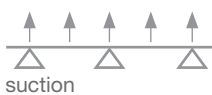
Building width	630 mm (+6 / -2 mm)
Thickness	20 mm (+/- 0.5 mm)
Weight	approx. 3.4 kg/m ²
Structure	6 layers / 5 chambers
U _p -value	approx. 1.7 W/m ² K
Fire classification	B-s1, d0 according to EN 13501
Light transmission	kristall approx. 60 %* / opal approx. 31 %*
Versions	crystal, opal, Color** / DuoColor** on request
Minimum radius for bending	min. 6.00 m



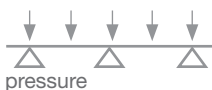
Load resistance

The information on load resistance relates to the failure of the panels or accessories.

The values do not contain any safety factors and do not replace any country-specific and building law certificates.

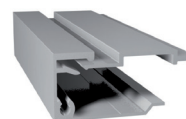


span	load
1.0 m	1.7 kN/m ²
1.5 m	1.4 kN/m ²

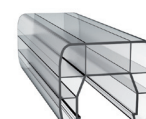


1.0 m	2.6 kN/m ²
1.5 m	1.8 kN/m ²

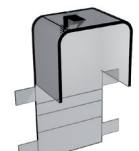
Accessories



side profile aluminium-U-profile
462040 + 492001



polycarbonate connector
380062



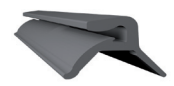
polycarbonate end cap
395008



front end aluminium-U-profile
462011

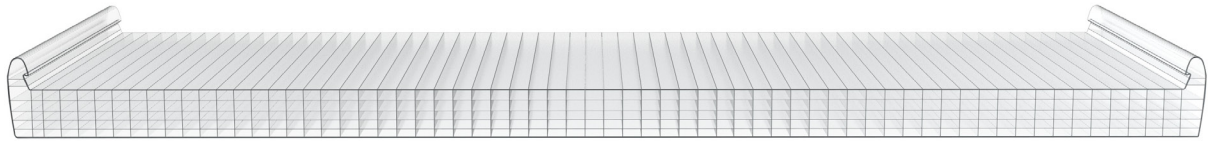


fastener
494020N



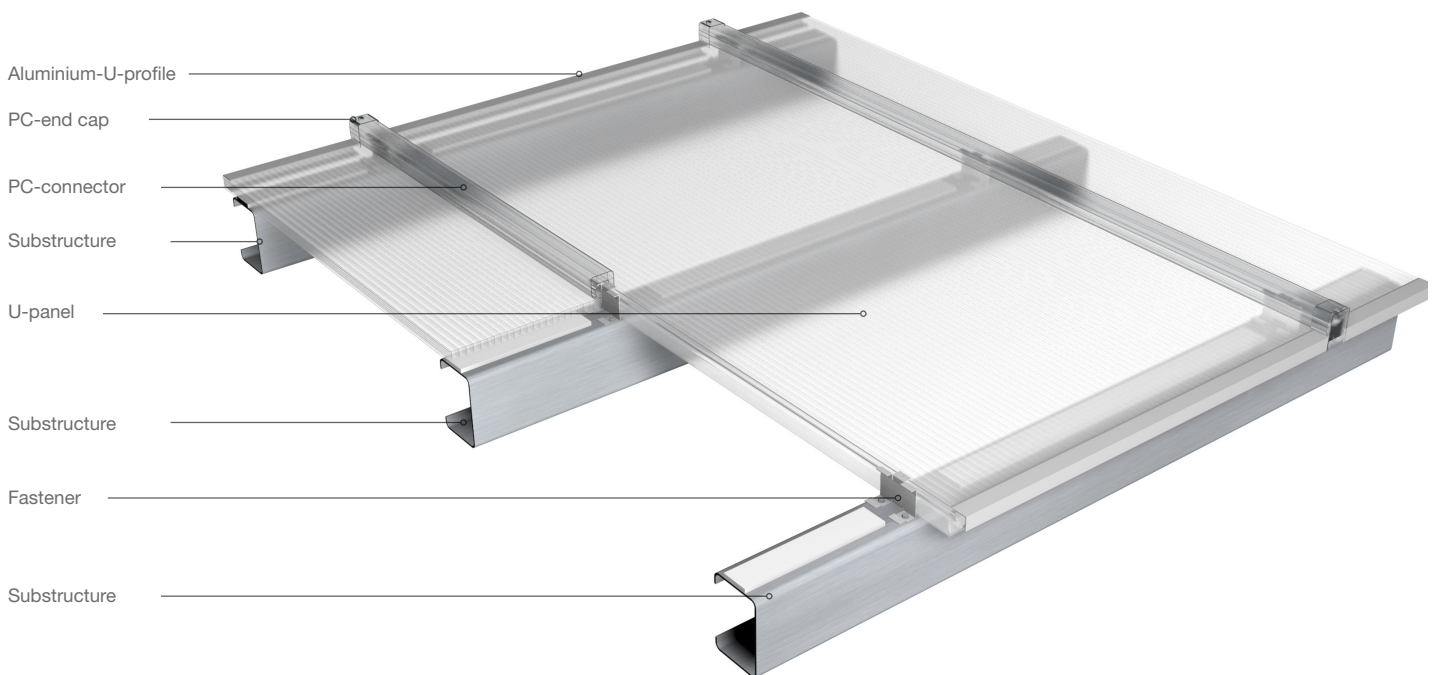
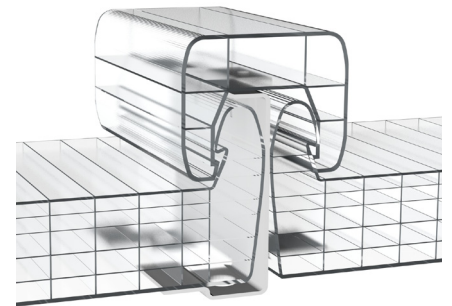
gasket for side profile
902901

PC 2630-25-6-U



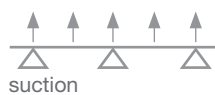
Product properties

Building width	630 mm (+6 / -2 mm)
Thickness	25 mm (+/- 0.5 mm)
Weight	approx. 3.6 kg/m ²
Structure	6 layers / 5 chambers
U _p -value	approx. 1.6 W/m ² K
Fire classification	B-s1, d0 according to EN 13501
Light transmission	crystal approx. 60 %* / opal approx. 30 %*
Versions	crystal, opal, Color** / DuoColor** on request
Minimum radius for bending	min. 8.00 m

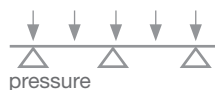


Load resistance

The information on load resistance relates to the failure of the panels or accessories.
The values do not contain any safety factors and do not replace any country-specific and building law certificates.

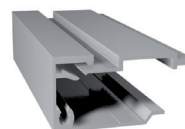


span	load
1.0 m	1.7 kN/m ²
1.5 m	1.4 kN/m ²

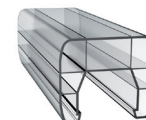


1.0 m	2.8 kN/m ²
1.5 m	2.0 kN/m ²

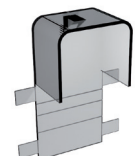
Accessories



side profile aluminium-U-profile
462540 + 492001



polycarbonate connector
380062



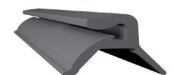
polycarbonate end cap
395008



front end aluminium-U-profile
462511

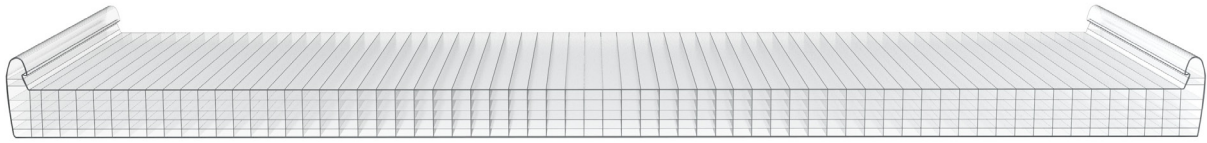


fastener
494025N



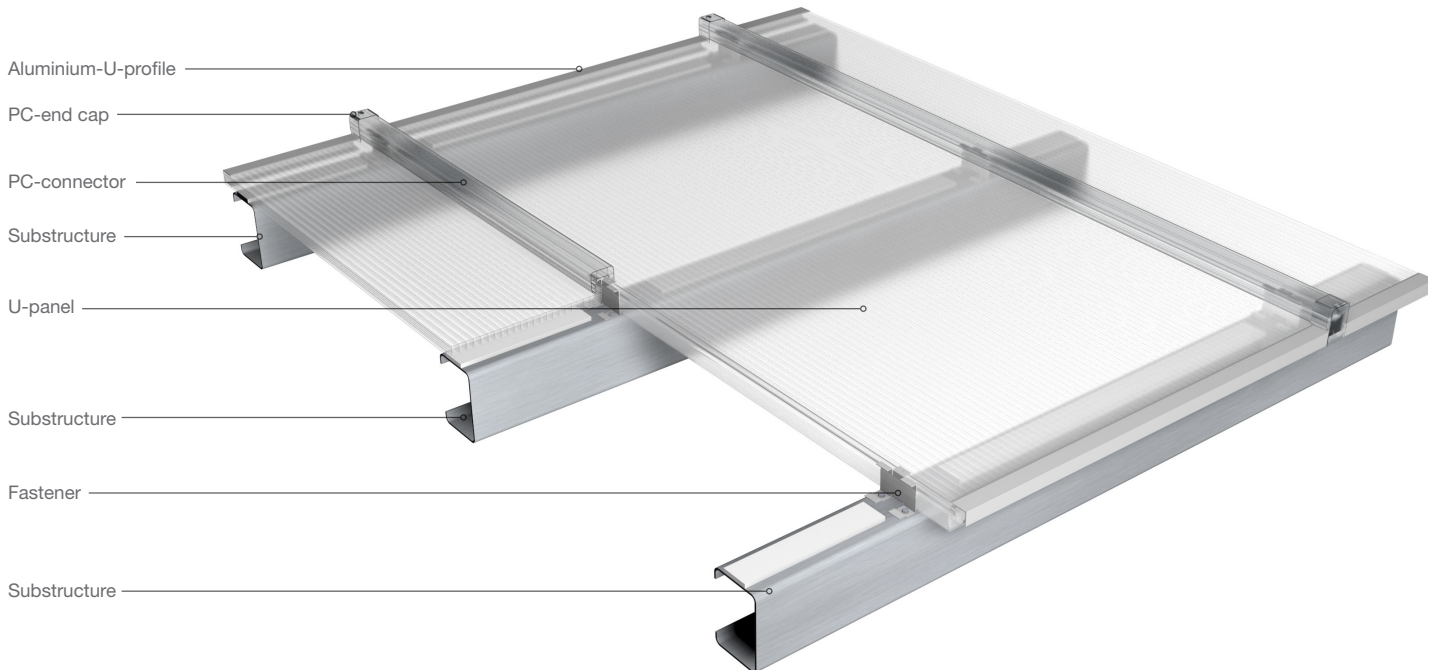
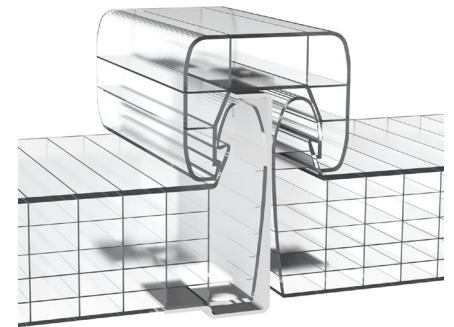
gasket for side profile
902901

PC 2630-25-6-U HD



Product properties

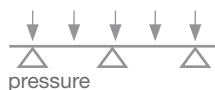
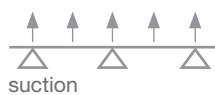
Building width	630 mm (+6 / -2 mm)
Thickness	25 mm (+/- 0.5 mm)
Weight	approx. 5.0 kg/m ²
Structure	6 layers / 5 chambers
U _p -value	approx. 1.6 W/m ² K
Fire classification	B-s1, d0 nach EN 13501
Light transmission	crystal approx. 60 %* / opal approx. 30 %*
Versions	crystal / opal / Color / DuoColor** on request
Minimum radius for bending	min. 10.00 m



Load resistance

The information on load resistance relates to the failure of the panels or accessories.

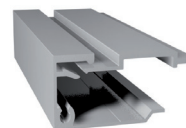
The values do not contain any safety factors and do not replace any country-specific and building law certificates.



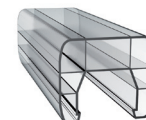
span	load
1.0 m	1.7 kN/m ²
1.5 m	1.4 kN/m ²

1.0 m	4.5 kN/m ²
1.5 m	3.5 kN/m ²

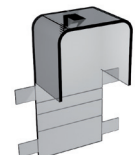
Accessories



side profile aluminium-U-profile
462540 + 492001



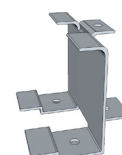
polycarbonate connector
380062



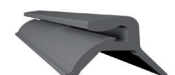
polycarbonate end cap
395008



front end aluminium-U-profile
462511

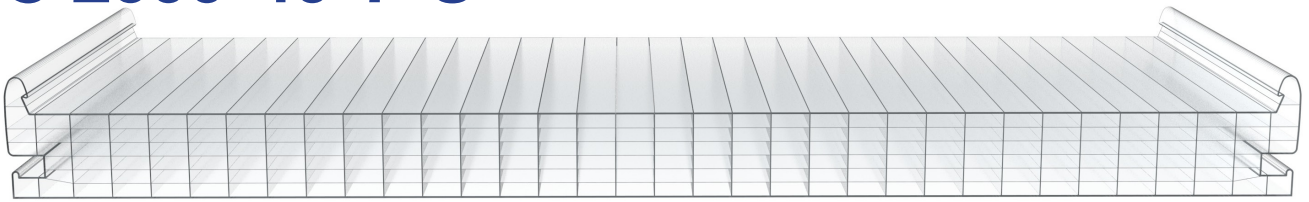


fastener
494025N



gasket for side profile
902901

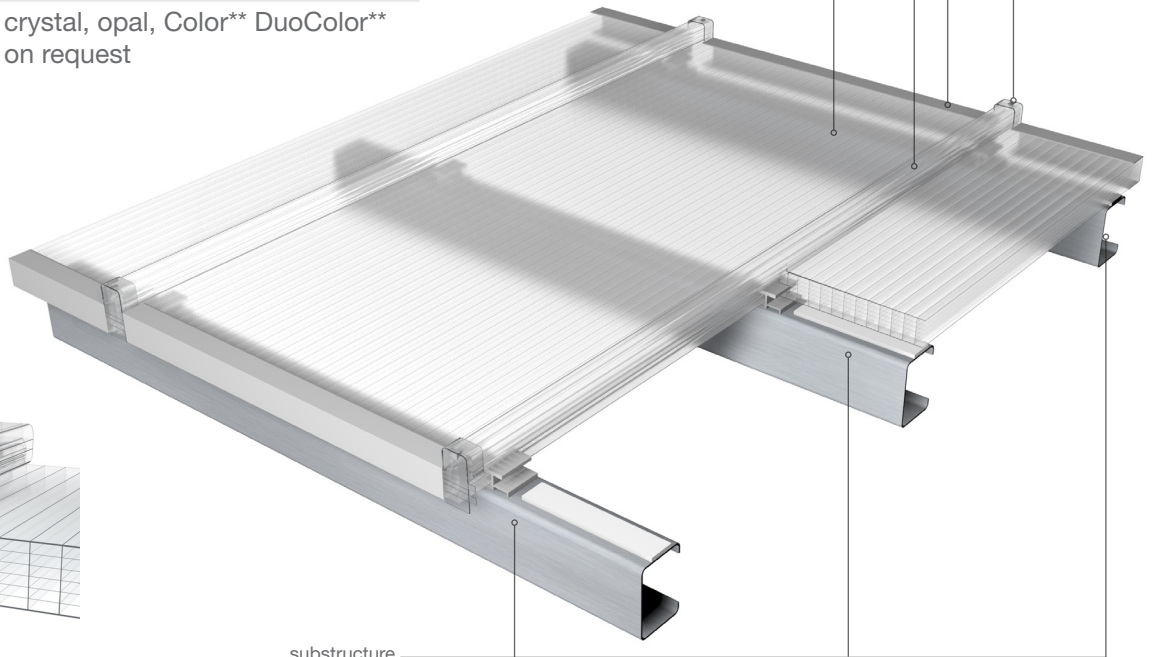
PC 2600-40-7-U



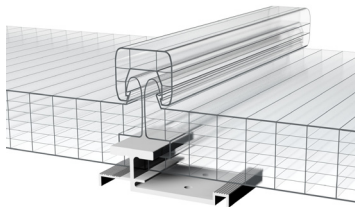
Product properties

Building width	605 mm (+6 / -2 mm)
Thickness	40 mm (+/- 0.5 mm)
Weight	approx. 4.6 kg/m ²
Structure	7 layers / 6 chambers
U _p -value	approx. 1.2 W/m ² K
Fire classification	B-s1, d0 according to EN 13501
Sound insulation	Rw 22dB
ETA / aBG	19/0452 / Z-10.19-835
Versions	crystal, opal, Color** DuoColor** on request

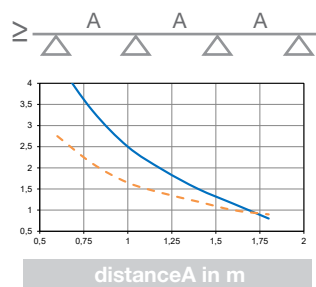
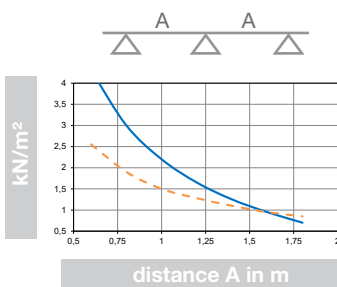
PC end cap
aluminium U-profile
PC Clip
PC U-Panel



substructure



Load resistance



--- suction load
— snow load at 5° of roof pitch

The diagrams below show recommended span widths depending on the type of installation. The values are only valid in connection with original Rodeca system accessories and may not be used as a substitute for project-related static calculations.

Accessoires

