



MÜHENDİSLİK PREFABRIKE YAPIM SİSTEMLERİ  
SANAYİ ve TİCARET LIMITED ŞİRKETİ



**METALDEKİ HAYALLERİNİZ İŞİMİZDİR**  
**PROFESSION BASED ON YOUR IMAGINATION**



**MÜHENDİSLİK PREFABRİKE YAPIM SİSTEMLERİ**  
**SANAYİ ve TİCARET LİMİTED ŞİRKETİ**

## METAL İŞLEME MERKEZİ METAL PROCESSING CENTER



İ.A.Y. Organize Sanayi Bölgesi  
İ.A.Y. Industrial Zone



Merkez Fabrika / Headquarter



CNC Lazer Kesim / CNC Laser Cutting



Dik İşleme Merkezi  
CNC Vertical Machining Center



CNC Punch Pres / CNC Punch Press



### HAKKIMIZDA

Metal levhaya perfore işini yapmaya 1967 yılında başlayan firmamız 1986 yılında genişletilmiş metal levha üretimini de bünyesine katarak TEKŞAN & KASSO ortaklığı oluşturulmuştur. İstanbul Anadolu Yakası Organize Sanayii'ndeki fabrikamızda müşterilerimize ileri teknolojideki makinalarımız ile çözüm sunarak proje teslimi ürün yapabilen komple bir sac işleme tesisi niteliğindedir.



### VİZYONUMUZ

Kurumsal bir firma olarak ekonomiye katkıda bulunmayı hedefliyoruz.



### MİSYONUMUZ

Bilgi ve deneyim birikimlerimizi paylaşarak sanayiye katkıda bulunmayı amaçlıyoruz.



### HEDEFİMİZ

İleri teknoloji.



### ABOUT US

Being in the metal perforation business since 1967 and including to its portfolio expanded metal manufacture, our company incorporated as the TEKŞAN & KASSO Partnership in 1986.

As a complete sheet processing plant, our head quarters in Anatolian Side of Istanbul Organized Industrial zone are at the disposal of our costumers to provide the best solutions on turnkey basis with our equipments for high technology.



### OUR VISION

Our main goal is to contribute to the economy as an incorporated body.



### OUR MISSION

It is our mission to add value to the industry by sharing knowledge, accumulation and experience.



### OUR GOAL

High technology.

**KASSO** ilklere imza atmaya devam ediyor;

**KASSO** Non-stop Innovation by



Türkiye sektöründe ilk kalite belgesini alan



Turkey's first quality certified company in its field,



Türkiye'de ilk rulo delme üretimini gerçekleştiren **KASSO**, 1,5 mm. kalınlık ve 1250 mm. genişliğine kadar her tip malzemeyi işleyebilmektedir.



The first manufacturer of roll perforations in Turkey, **KASSO** is capable to process all types of materials up to 1,5 mm thickness and 1200 mm width.



Perfore işlemede maximum malzeme kalınlığı 0,30 mm'den 10 mm'dir. (2000X4000mm)



The maximum material thickness for the perforation process is 10mm from 0,30mm. (2000X4000mm)



Genişletilmiş işlemede maksimum malzeme kalınlığı 6x2600 mm'dir.



Maximum material thickness for expanded process is 6x2600 mm.

32. Yılımız



Özyeğin Üniversitesi/Cephe/Facade



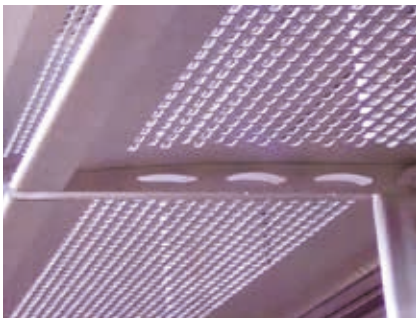
Zeugma Antik Kent/Cephe/Facade



Forum Marmara / Cephe ve Tavan /  
Facade and Ceiling



Forum İstanbul / Kubbe/ Dome



Dublin / Perforeli Güneş Kırıcılar /  
Perforated Solar Shading

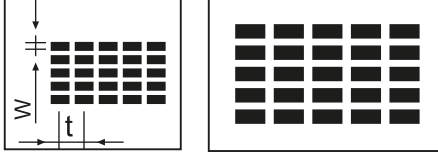


ARAÇ TAŞIYICILARI  
ASKILI TAŞIYICI  
ARAÇ PERFORELERİ  
AKUSTİK PANELLER  
ASMA TAVAN UYGULAMALARI  
AYDINLATMA ELEMANLARI VE REFLEKTÖRLERİ  
BAHÇE KORKULUK VE ÇİTLERİ  
BETON VE PREKAST KALIPLAR  
BEYAZ EŞYA  
CNC ABKANT (CNC BÜKÜM)  
CNC DİK İŞLEME MERKEZİ  
ÇATI VE CEPHE GİYDİRME ELEMANLARI (KAPLAMA MALZEMELERİ)  
ÇÖP SEPETLERİ  
ÇELİK KONSTRÜKSİYON  
DEMİRYOLU VE KORKULUK KALIPLARI  
DELİNİMİŞ METAL LEVHALAR  
DEKORASYON  
EMNİYET VE DEKORATİF AMAÇLI UYGULAMALAR  
ENDÜSTRİYEL IZGARALAR  
EMNİYET GEÇİTLERİ  
EGZOZ BORULARI / SUSTURUCULAR  
ELEKTRİK  
ELEM VE BOYLAMA ELEKLERİ  
FUAR STANDLARI  
GENİŞLETİLMİŞ METAL LEVHALAR  
GÜNEŞ KIRICI PANELLER  
GÜVENLİK BÖLÜMLERİ  
GEMİ İNŞAA VE İMALATLARI  
GIDA  
ISITMA ÜNİTELERİNDE PANJUR  
İNŞAAT  
İZOLASYON  
KİMYA  
KLİMA, HAVA VE YAĞ FİLTRELERİ  
KENT VE BAHÇE MOBİLYALARI  
KURUTMA FIRINLARI  
KAYNAKLI KONSTRÜKSİYON  
KÖŞE PROFİLLERİ  
LPG SOBA PANJURLARI  
MAKİNA KORUMA KAFESLERİ  
MERDİVEN BASAMAĞI İMALATI  
METAL KABUKLAR  
MASA, SANDALYE, OFİS MOBİLYALARI  
MOTİF KESİM  
OTOMOTİV  
PATLATILMIŞ METAL LEVHALAR  
PLAZMA KEŞİM  
PUNCH PRES  
RABİS TEL  
RAF SİSTEMLERİ / PALETLER  
ROBOTLU KAYNAK İMALATI  
RULO DELME  
TARIM MAKİNALARI  
TALAŞLI İMALAT  
ÜTÜ MASASI  
YAN SANAYİ  
YÜRÜME YOLU / PLATFORMLAR

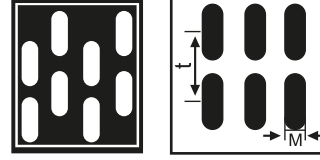
VEHICLE CARRIERS  
HANGER CARRIER  
CONVEYOR PERFORATES  
ACOUSTIC PANELS  
SUSPENDED CEILING APPLICATIONS  
LIGHTING ELEMENTS AND REFLECTORS  
GARDEN BALUSTRADES AND FENCES  
CONCRETE AND PRE-CAST MODELS  
WHITE GOODS  
CNC ABGANT (CNC BENDING)  
VERTICAL CNC MACHINE CENTER  
OUTDOOR COATING METATERIALS  
TRASH BIND  
STEEL CONSTRUCTION  
RAILROAD AND BALUSTRADE MODELS  
PERFORATED METAL SHEETS  
DECORATION  
SAFETY AND DECORATIVE APPLICATIONS  
INDUSTRIAL GRIDS  
SAFETY PASSAGES  
EXHAUST PIPES / MUFFLERS  
ELECTRICS  
SIEVES AND FILTERS  
FAIR BOOTHS  
EMBOSSSED METAL SHEETS  
SCREEN PANELS  
SAFETY CABINS  
SHIP BUILDING AND PRODUCTION  
FOOD  
HEATING SYSTEMS BRACKETS  
CONSTRUCTION  
INSULATION  
CHEMICALS  
AIR CONDITIONING, AIR AND OIL FILTERS  
CITY AND GARDEN FURNITURE  
DRYING OVENS  
WALDEN STRUCTURING  
CORNER PROFILES  
LPG OVEN FENCES  
EQUIPMENT CASING  
STAIRS  
METAL FACADE CLADDINGS  
DESKS, CHAIRS AND OFFICE FURNITURE  
CUTTING MOTIF  
AUTOMOTIVE  
EMBOSSSED METALS  
PLAZMA CUTTING  
PUNCH PRESS  
RABİS WIRE  
RACK SYSTEMS / PALLETS  
ROBOTIC WELDING  
ROLL PERFORATION  
AGRICULTURAL EQUIPMENTS  
MACHINING  
IRONING BOARDS  
SUPPLY INDUSTRY  
PEDESTRIAN TRACKS / PLATFORMS



dikdörtgen  
rectangle



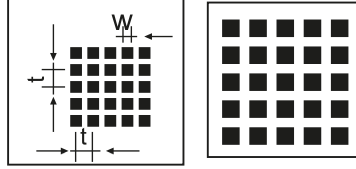
DELİK ÇAPı Hole Diameter W	İLERLEME progress t	DİKDÖRTGEN DELİKLER - rectangle holes					
		# 0,5	# 0,75	# 1	# 1,2	# 2	# 3
<b>DKP HRP SAÇLAR / ALÜMİNYUM LEVHALAR / PASLANMAZ SAÇLAR</b> DKP HRP sheets/aluminum sheets/stainless steel sheets							
2x10	10	●	●	●			
4x10	10		●		●	●	
8x30	12			●			● ●



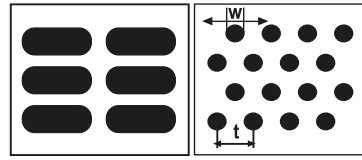
slot  
slot

DELİK ÇAPı Hole Diameter W	İLERLEME progress t	SLOT DELİKLERİ - slotted holes				
		# 0,75	# 1,5	# 4	# 4,5	# 5
<b>DKP HRP SAÇLAR / ALÜMİNYUM LEVHALAR / PASLANMAZ SAÇLAR</b> DKP HRP sheets/aluminum sheets/stainless steel sheets						
70x20	25	●	●		●	
5x25	30	●	●	●		
8x30	40			● ●		●

kare  
square



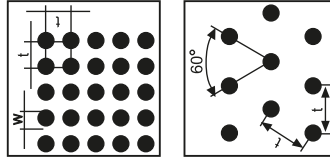
DELİK ÇAPı Hole Diameter W	İLERLEME progress t	KARE DELİKLER - square holes						
		# 1	# 1,2	# 1,5	# 2	# 3	# 4	# 5
<b>DKP HRP SAÇLAR / ALÜMİNYUM LEVHALAR / PASLANMAZ SAÇLAR</b> DKP HRP sheets/aluminum sheets/stainless steel sheets								
5x5	10	● ●			●			
8x8	16		●	●		●		
10x10	20		●		●		●	
20x20	30			●	●			●



patlatılmış  
embossed

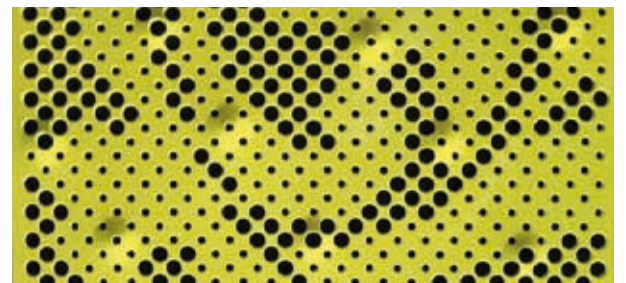
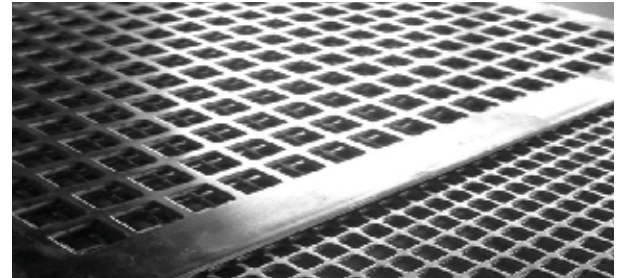
DELİK ÇAPı Hole Diameter W	İLERLEME progress t	PATLATILMIŞ LEVHALAR embossed perforations		
		# 2	# 3	# 4
<b>DKP VE ALÜMİNYUM SAÇLAR</b> DKP and aluminum sheets				
20x50	25		●	
30x70	30			●
ø13	40	●		

yuvarlak  
round



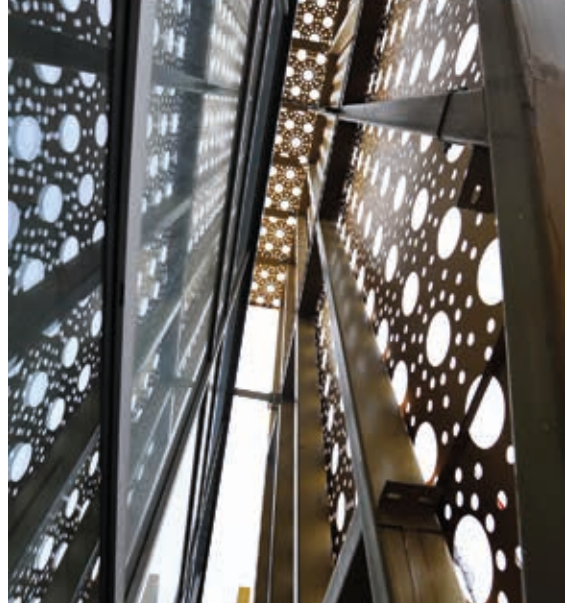
DELİK ÇAPı Hole Diameter W	İLERLEME progress t	YUVARLAK DELİKLER Round Perforations									
		# 0,5	# 0,75	# 1	# 1,2	# 1,5	# 2,5	# 3	# 3,5	# 4	# 6
<b>DKP HRP SAÇLAR / ALÜMİNYUM LEVHALAR/PASLANMAZ SAÇLAR (Malzeme Ebatları:1250x2500)</b> DKP sheets/aluminum sheets/stainless steel sheets - (material dimension:1250x2500)											
1.8	4	●									
1.8	3.6	●									
2	4		●	●							
2.2	4.1			●							
2.2	4.5			●							
2.5	4.5			●	●						
3	5			●	●						
3.5	5.5				●						
4	7					●					
4	8				●						
4.5	7.5			●							
5	10					●					
6	11						●				
8	12							●			
10	15								●		
12	22									●	

● DKP  
● ALM  
● PSL  
● STAINLESS



ÖZEL DELİKLİ SAC İMALATLARI  
CUSTOM-MADE PERFORATED PRODUCTS

AC YAPI SHOWROOM / KASSO MÜHENDİSLİK



MULTIPERFORE ELOKSAL CEPHE  
MULTIPERFORATED ANODIZED FAÇADE

BAĞ PASTANESİ / BAĞ PATISSERIE / KAF MİMARLIK



MULTIPERFORE CEPHE  
MULTIPERFORATED FAÇADE

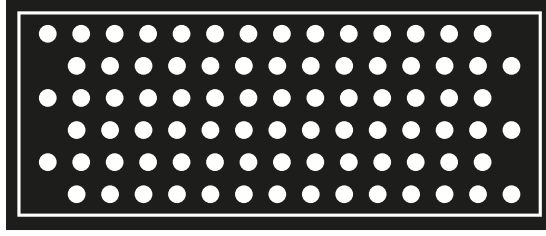
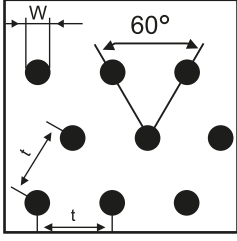
KATAR BİLİM VE TEKNOLOJİ KURUMU / QATAR SCIENCE & TECHNOLOGY PARK / WOODS BAGOT ARCHITECT



PERFORE PASLANMAZ ÇELİK PANEL VE KOLON KAPLAMA  
PERFORATED STAINLESS STEEL PANEL AND COLUMN CLADDING



**DELİNİMİŞ RULO SACLAR**  
**ROLL PERFORATION METALS**



**GENİŞLETİLMİŞ RULO SACLAR**  
**EXPANDED ROLL METALS**



DELİK ÇAPI Hole Diameter W	İLERLEME progress t	RULO PERFORE Roll Perforations				
		# 0,5	# 0,75	# 1	# 1,2	# 2
DKP HRP SACLAR / ALÜMİNYUM LEVHALAR/PASLANMAZ SACLAR DKP sheets/aluminum sheets/stainless steel sheets						
4	7,5	●	●	●	●	●
5	10	●	●	●	●	●
6	10	●	●	●	●	●

● ALM.  
ALM.

● DKP  
DKP

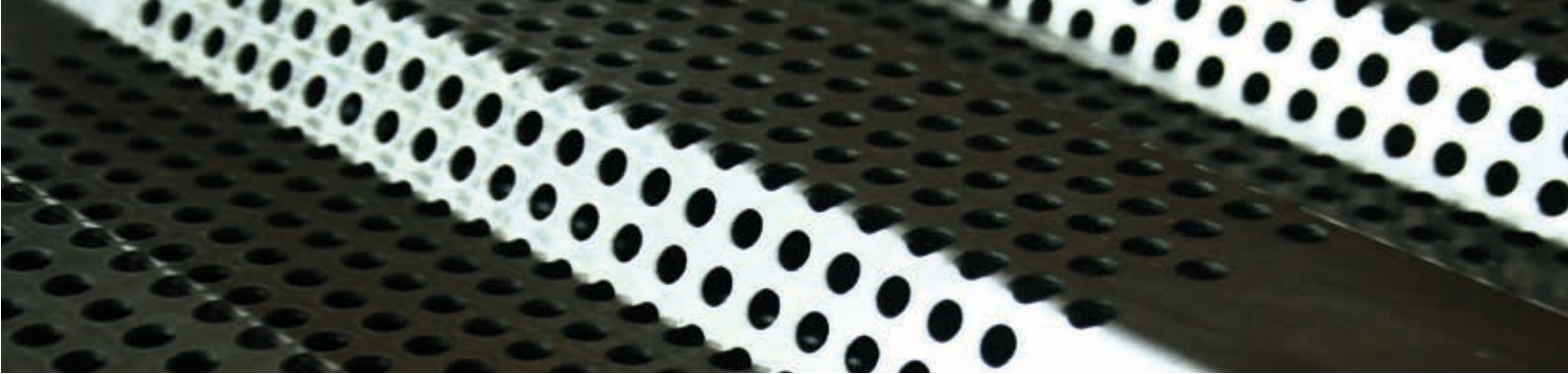
● BAKIR  
COPPER

● PASLANMAZ  
STAINLESS

● TİTANYUM ÇİNKO  
TITANIUM ZINC

DKP/ALÜMİNYUM/BAKIR/ TİTANYUM ÇİNKO (t : 0,3 - 1,5) DKP/aluminum/copper/titanium zinc (t : 0,3 - 1,5)			
MALZEME KODU	GÖZ (A-B)	EN	BOY
KGS200	4x6	600	ruło
KGD210	6x12	600	ruło
KGS220	10x30	600	ruło
KGS240	20x60	600	ruło

**AKUSTİK TRAPEZ SAC / ACOUSTIC TRAPEZOIDAL SHEET**



**GENİŞLETİLMİŞ RULO SAC / EXPANDED COIL**



**DELİNİMİŞ RULO SAC / PERFORATED SHEET METAL ROLL**





ALÜMİNYUM MESH CEPHE  
ALUMINUM MESH FACADE

ANTALYA BAUHAUS / AKALANT ALÜMİNYUM CEPHE SİSTEMLERİ



ALÜMİNYUM PERFORE CEPHE  
ALUMINUM PERFORATED FACADE

ÖZYEĞİN ÜNİVERSİTESİ / ÖZYEĞİN UNIVERSITY / B DESIGN- RMJM



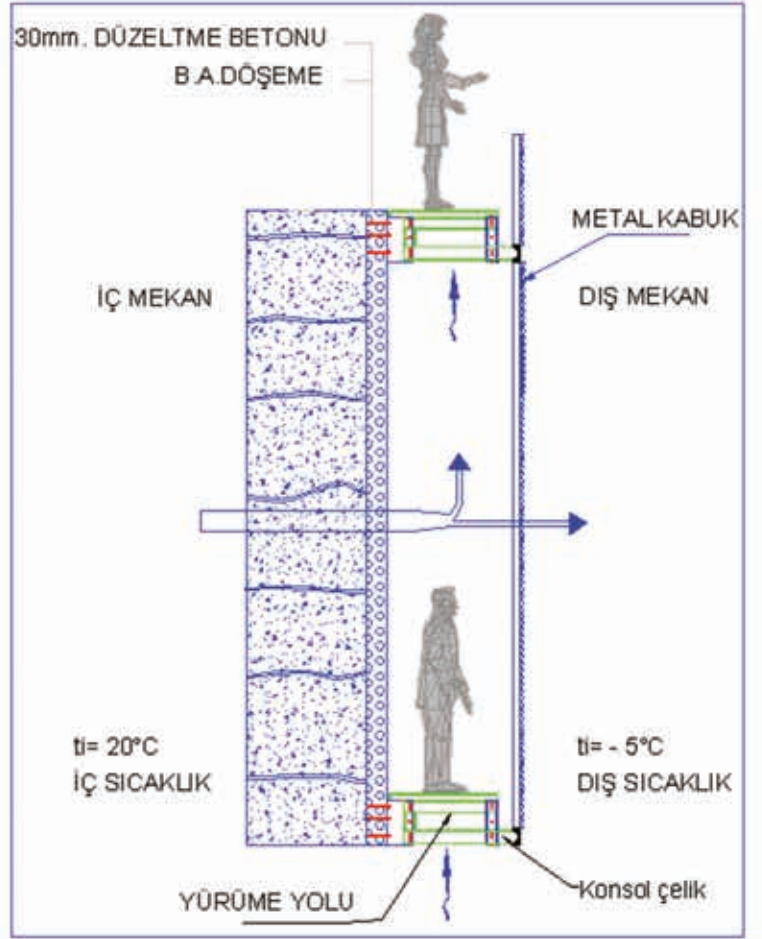
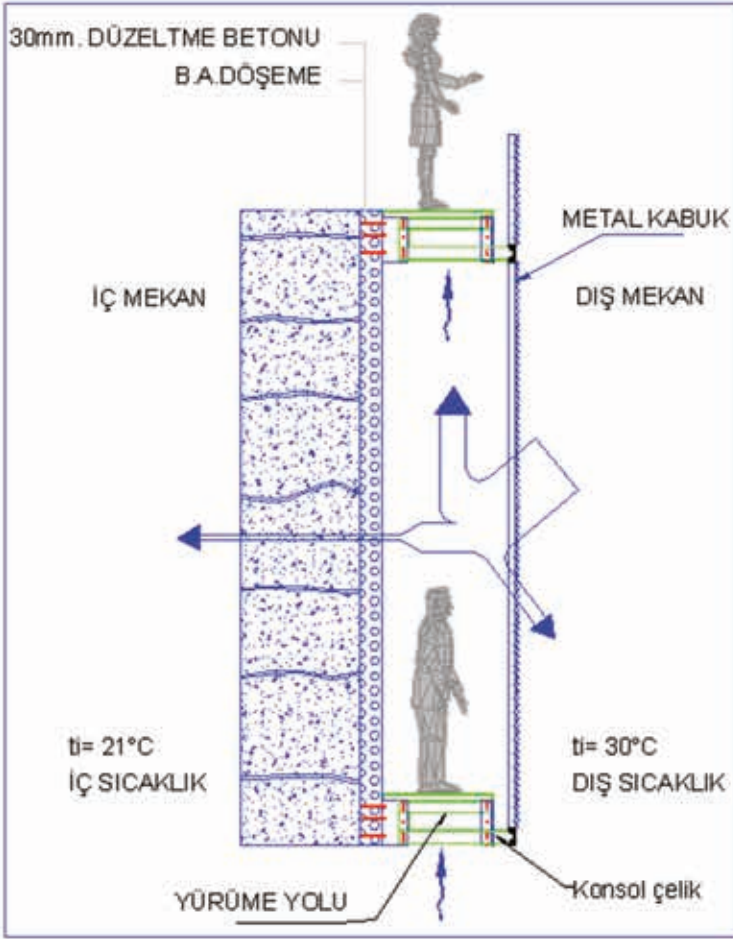
PERFORE TRAPEZONEL CEPHE  
PERFORATED TRAPEZOID FACADE



## METAL KABUK

- Etkili tasarım & eloksallı kaplı alüminyum görseelliği & estetik
- Enerji tasarrufu & termal yalıtım & ısı izolasyonu
- Hafif Malzeme ve Alt Konstrüksiyon Avantajı
- Akustik absorbe özelliği
- Maliyet avantajı
- Dünya'da KASSO atılım imzası

## Doubleskin Facade Cladding



## Perfore Cephe Panel İmalatları Perforated Facade Cladding



RAİF DİNÇÖK KÜLTÜR MERKEZİ / RAİF DİNÇÖK CULTURAL CENTER / EMRE AROLAT MİMARLIK

2011 CITYCAPE  
DUBAİ ÖDÜLÜ



PERFORE CORTEN CEPHE  
PERFORATED CORTEN FACADE

FORD OTOSAN MÜHENDİSLİK MERKEZİ / FORD OTOSAN ENGINEERING CENTRE / TECE MİMARLIK



ALÜMİNYUM MESH CEPHE  
ALUMINIUM MESH FACADE

**İSTANBUL LOUNGE 2 / MULTİPERFORE CEPHE / SEVEN MİMARLIK**  
İSTANBUL LOUNGE 2 / MULTİPERFORATED FACADE



**TAKSİM TOMTOM BUTİK OTEL / LAZER KESİM CEPHE / NOBON MİMARLIK**  
TAKSİM TOMTOM BOUTIQUE HOTEL / LASER CUT FACADE



**EROĞLU SKYLAND SATIŞ OFİSİ / CORTEN CEPHE**  
EROĞLU SKYLAND SALES OFFICE / CORTEN FATADE



**ÇAMLIÇA SPOR OKULU / MOTİF LAZER KESİM CEPHE**  
ÇAMLIÇA SPORTS SCHOOL / MOTİF LASER CUT FACADE



**RINGS İSTANBUL / LAZER KESİM VE MESH CEPHE / HAKAN KIRAN MİMARLIK**  
RINGS İSTANBUL / LASER CUT AND MESH FACADE



**ÜMRANİYE HİZMET BİNASI / LAZER KESİM CEPHE / İKA MİMARLIK**  
ÜMRANİYE MUNICIPALITY BUILDING / LASER CUT FATADE



BAKÜ YENİ HAYAT OTELİ / BAKÜ YENİ HAYAT HOTEL / DEĞİŞİM CEPHE SİSTEMLERİ



LAZER KESİM CEPHE VE KEDİ YOLU  
LASER CUT FACADE AND CATWALKS

BODRUM CENTRON İŞ MERKEZİ / BODRUM CENTRON BUSINESS CENTER / DARA KIRMIZI TOPRAK MİMARLIK

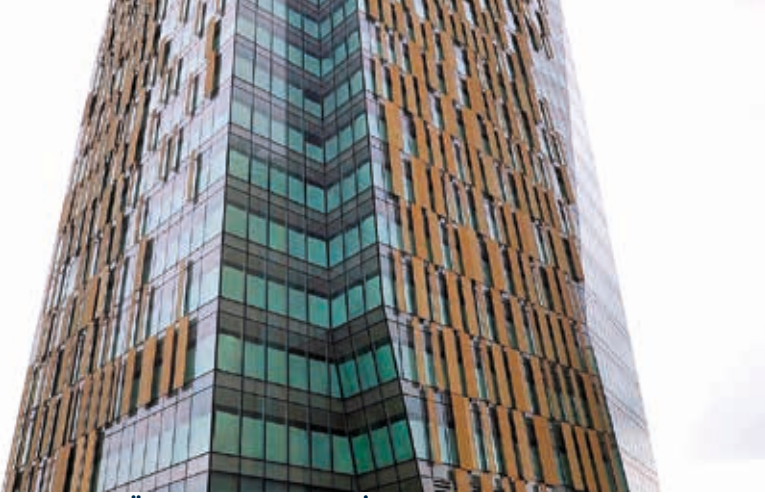


LAZER KESİM CEPHE  
LASER CUT FACADE

YAPI KREDİ ACCR / TEĞET MİMARLIK



AYNA YÜZEY PASLANMAZ CEPHE  
MIRROR FINISH STAINLESS STEEL FACADE



**RÖNESANS TOWER / DİZAYN PERFORE CEPHE /**  
**FEHMİ KOBAL & FX FOWLE ARCHITECTS**  
RÖNESANS TOWER / DESIGNPERFORATED FACADE



**BILKENT CENTER AVM / MESH CEPHE**  
BILKENT CENTER SHOPPING MALL /  
MESH FACADE



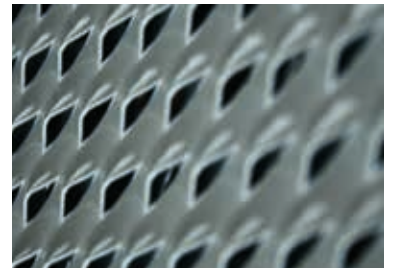
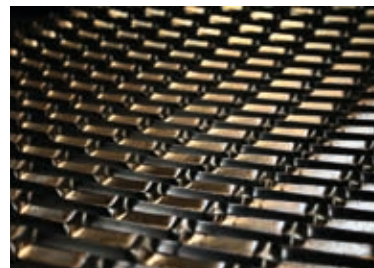
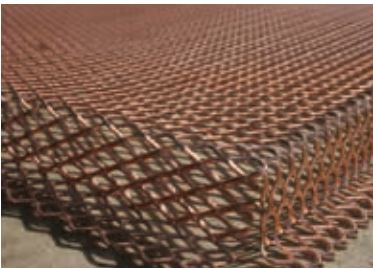
**ARKAS ORHANLI / PERFORE GÜNEŞ KIRICI / KREATİF MİMARLIK**  
ARKAS ORHANLI / PERFORATED SUNSHADES



**AUTOPIA / MESH CEPHE / DARA KIRMIZITOPRAK & GÖKHAN**  
**AVCIOĞLU MİMARLIK**  
AUTOPIA / MESH FACADE



**GREEN CHEMICALS / MESH CEPHE / KENT YAPI & A4 MİMARLIK**  
GREEN CHEMICALS / MESH FACADE





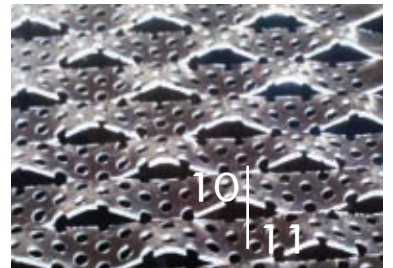
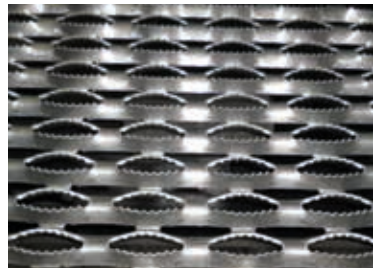
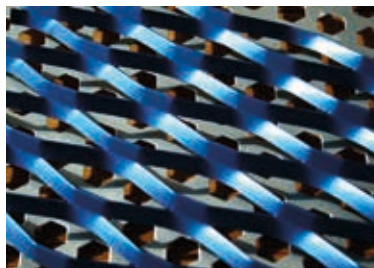
EQUIPMENT CULTUREL KREMLIN / MULTİPERFORE CEPHE / EQUIPMENT CULTUREL KREMLIN / MULTİPERFORATED FACADE



FORUM İSTANBUL / MESH CEPHE / MULTI DEVELOPMENT  
FORUM İSTANBUL / MESH FACADE



MALTEPE FUAYE / MESH CEPHE  
MALTEPE FUAYE / MESH FACADE





**KANYON AVM / İÇ KUBBE / TABANLIOĞLU MİMARLIK**  
**KANYON MALL / DOME**



**VARYAP MERIDIAN / CEPHE ANKRAJ VE HOOK / RMJM**  
**VARYAP MERIDIAN / FAÇADE ANCHORAGE AND HOOKS**



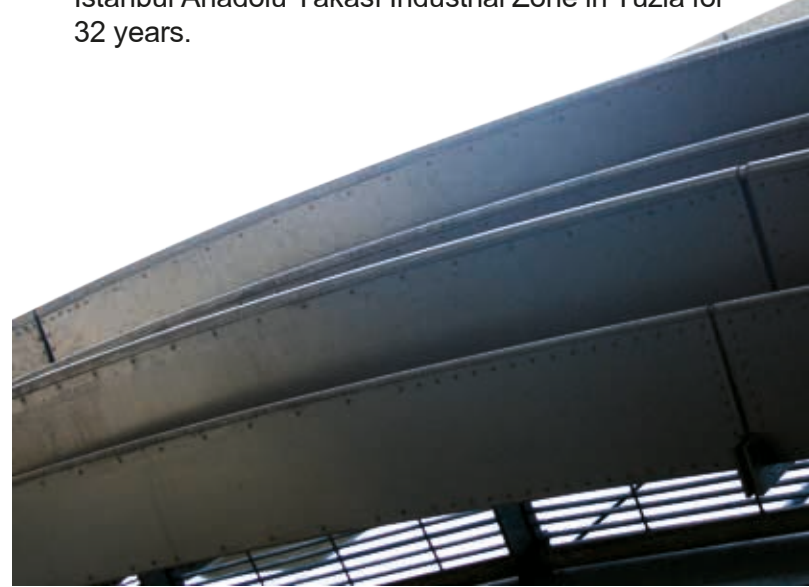
**FORUM İSTANBUL AVM / KUBBE / ARUP - ERA MİMARLIK**  
**FORUM İSTANBUL MALL / DOME**



Firmamız; 3000 m<sup>2</sup> açık, 7000 m<sup>2</sup> kapalı alanda İstanbul Anadolu Yakası O.S.B.'deki fabrikamızda 32 yıldır endüstriyel kullanım alanları için metal levha üretmektedir.



Our company manufactures metal sheets and finished products at our factory premises of 3000 m<sup>2</sup> outdoor and 7000 m<sup>2</sup> indoor areas, located in İstanbul Anadolu Yakası Industrial Zone in Tuzla for 32 years.



**KANYON AVM / GÜNEŞ KIRICI / TABANLIOĞLU MİMARLIK**  
**KANYON MALL / SUNSHADES**



**CASA FUAR STANDI/ MESH KAPLAMA**  
**CASA FAIR STAND / MESH CLADDING**



**NOVADA AVM / MESH KAPLAMA**  
**NOVADA MALL / MESH CLADDING**



PHARMACTİVE FABRİKA / MESH CEPHE / NEZAT SAYIN MİMARLIK  
PHARMACTIVE FACTORY / MESH FACADE



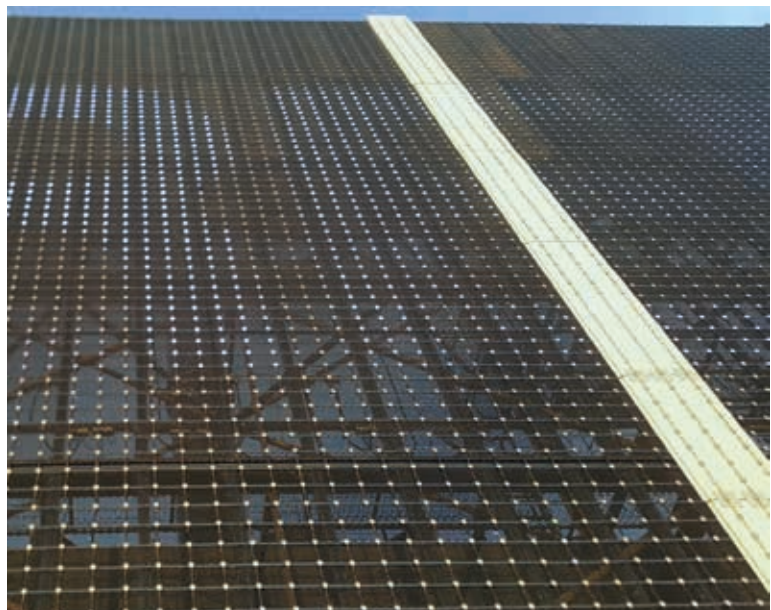
FORUM ÇAMLIK AVM / MESH CEPHE / T-T DESIGN  
FORUM ÇAMLIK MALL / MESH FACADE



BURSA SOĞANLI KÜLTÜR MERKEZİ / MESH CEPHE  
BURSA SOĞANLI CULTURAL CENTRE / MESH FACADE



BACKHAUS CAFÉ / MESH ASMATAVAN  
BACKHAUS CAFÉ / MESH CEILING



FOLKART TOWERS / MEDIA MESH KAPLAMA / YAĞCIOĞLU MİMARLIK  
FOLKART TOWERS / MEDIA MESH CLADDING

CUSTOM MADE FORMS AND MODELS ARE AVAILABLE



# BİTMIŞ ÜRÜNLER FINISHED PRODUCTS



İZMİR ADNAN MENDERES HAVALİMANI OTOYOLU VE TERMİNAL BİNASI / MESH CEPHE VE KEDİ YOLU / TAV- YAKUP HAZAN MİMARLIK  
İZMİR ADNAN MENDERES AIRPORT AUTOPARK AND TERMINAL BUILDING / MESH FAÇADE AND CATWALK



METROPOL İSTANBUL / MESH CEPHE / RMJM  
METROPOL İSTANBUL / MESH FAÇADE / RMJM



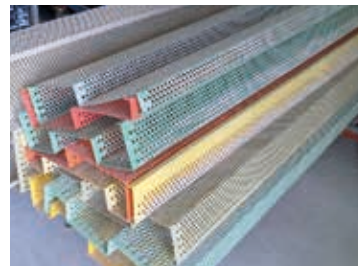
WORKINN OTEL / MESH VE LAZER KESİM KAPLAMA / ÇİNİCİ MİMARLIK  
WORKINN HOTEL / MESH AND LASER CUT CLADDING / ÇİNİCİ MİMARLIK



VAKKO GENEL MÜDÜRLÜK / ÖRGÜ MESH BÖLÜCÜ / AUTOBAN MİMARLIK  
VAKKO HEADQUARTERS / WIRE MESH SEPERATOR



MARS SİNEMALARI / MESH KOLON KAPLAMA / GEOMİN MİMARLIK  
MARS CINEMA / MESH COLUMN CLADDING







**CASA MOBİLYA / MESH CEPHE / HALDUN AKALIN DESIGN**  
CASA FURNITURE / MESH FAÇADE



**MECAPLAST AR-GE MERKEZİ / MESH CEPHE / İGLO MİMARLIK**  
MECAPLAST R&D CENTER / MESH FAÇADE



**ZORLU CENTER / TRİCO İZGARA KAPLAMA**  
ZORLU CENTER / TRICO GRID CLADDING



**MAKKAH CLOCK ROYAL TOWER HOTEL/ MESH ASMA TAVAN**  
MAKKAH CLOCK ROYAL TOWER HOTEL / MESH CEILING





**BITMIŞ ÜRÜNLER**  
**FINISHED PRODUCTS**

TÜRK TELEKOM ARENA / ASP ARCHITECT



**MESH ASMA TAVAN**  
**MESH CEILING**



RIXOS ESKEİŞEHİR / POLİMEKS

**MULTİPERFORE ASMA TAVAN**  
**MULTİPERFORATED CEILING**

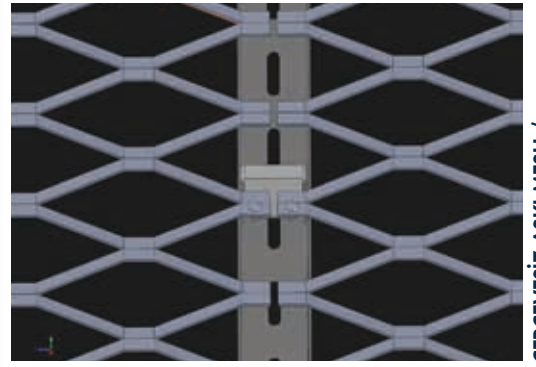
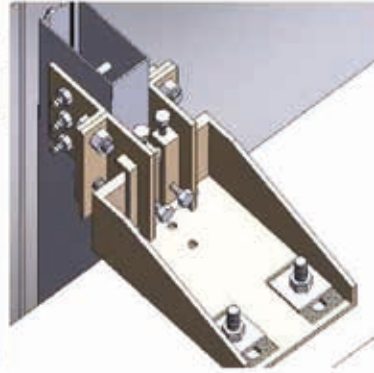
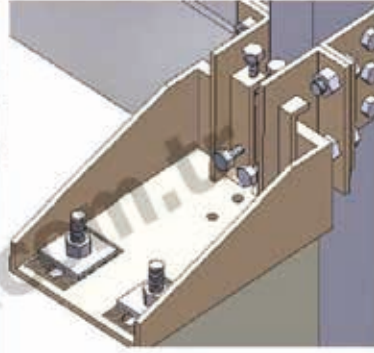


YAPI KREDİ ACCR / TEĞET MİMARLIK



**MESH ASMA TAVAN**  
**MESH CEILING**





CERÇEVESİZ ASKI MESH /  
FRAMELESS MESH FIXING



RABİS TELİ İMALATI / PLASTER MESH FABRICATION

## ANKRAJ ve HOOK İMALATLARI

- Rüzgar, kasırga, deprem, yangında yapının genişlemesini absorbe edebilir.
- Eğik cephe ve kubbe gibi her yüzeyde uygulanabilir
- Her yöne hareket özelliği
- Proje bazlı Özel tasarım bağlantı parçalarıdır.
- Yeni trend panel sistem cephelerde çözüm aksesuarları



ESENTAI TOWER ALMATY



KAPITAL REAL ESTATE



ONALTI DOKUZ PROJESİ



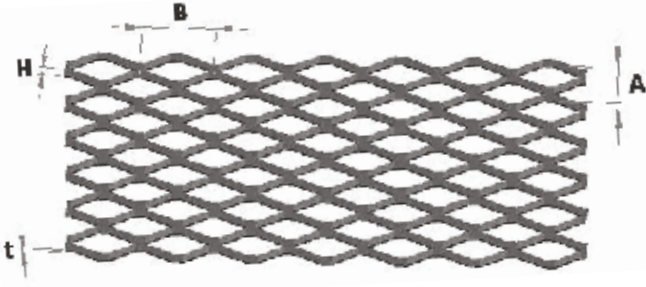
VARYAP MERIDIAN



TRUMP TOWERS

## TRUMP TOWERS ISTANBUL / CEPHE ANKRAJ VE HOOK / FAÇADE ANCHORAGES AND HOOKS





GENMESH TANIMI		
A (mm)	GÖZ ARALIĞI	YAZIM ŞEKLİ
B (mm)	GÖZ ARALIĞI	A x B x H x t (mm)
H (mm)	HATVE	ÖRNEK YAZIM
t (mm)	KALINLIK	25 x 75 x 6 x 2mm
Örnek Okuma : 25x75 göz 6 hatve 2mm kalınlık		

## DKP/ALÜMİNYUM/BAKIR/TİTANYUM ÇİNKO/KORTEN LEVHALAR ( t : 0,3 - 4,0 ) DKP/aluminum/copper/titanium zinc expanded roll metal ( t : 0,3 - 4,0 )

MALZEME KODU	İSİM	GÖZ (A-B)	EN (mm)	BOY (mm)
KGS200	Fit	4x6	600	2000
KGS210	Sky	6x12	1000	2000
KGS212	Feel	8x16	1000	2000
KGS215	Moon	8x35	1100	2400
KGS217	Diamond	10x25	1000	2000
KGS220	Smart	10x30	1200	2400
KGS225	Elegant	12x42	1100	3000
KGS227	Wave	12x42-Ş	1100	3000
KGS230	Concept	15x45	1500	3000
KGS235	Honey	15x45-PG	1500	3000
KGS237	Effect	20x52	1500	3000
KGS240	Classic	20x60	1500	3000
KGS242	Bird eye	12x41-PG	1500	3000
KGS245	Eliptic	24x41-PG	1500	3000
KGS250	Basic	25x75	2500	3000
KGS270	Mask	35x100	1500	3000
KGS275	Trend	50x100	1500	4000
KGS277	Style	50x110	2500	4000
KGS280	Army	50x160	1000	4000
KGS285	XXL	75x200	2500	4000

## PASLANMAZ ÇELİK LEVHALAR ( t : 0,3 - 3,0 ) - stainless steel sheets ( t : 0,3 - 3,0 )

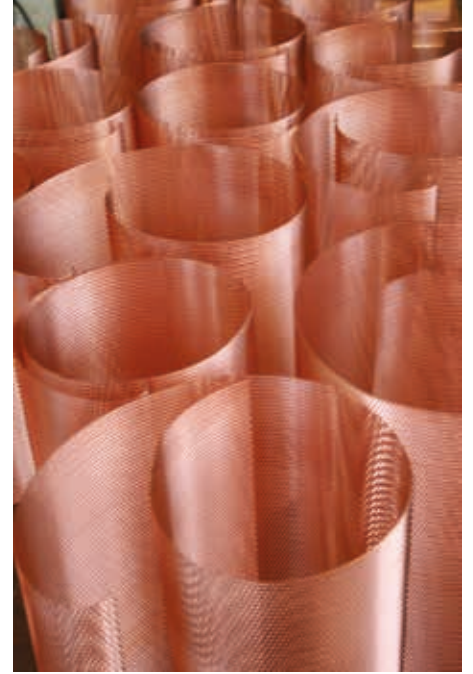
MALZEME KODU	İSİM	GÖZ (A-B)	EN (mm)	BOY (mm)
KGS400	Fit	4x6	600	2000
KGS410	Sky	6x12	1000	2000
KGS420	Smart	10x30	1000	2000
KGS430	Classic	20x60	1000	2000
KGS440	Basic	25x75	1000	2000

## KULLANIM ALANLARI

- Özel tasarım mimariler
- Güvenlik Korkulukları ve Çit Uygulamaları
- Ses yalıtımı ve Akustik Paneller
- Yürüme Yolları ve İskeleler
- Filtre ve Filtreleme Sistemleri
- Otomotiv Yan Sanayi ve Aksesuarı
- Gıda Alanlarında Depolama Kurutma ve Ayırıştırma İşlemleri

*İstenilen ebatlarda yapılabilir.*

*Production based on intended dimensions.*



**BAKIR MESH İMALATLAR  
COPPER MESH PRODUCTS**



**PASLANMAZ ÇELİK MESH KOLON KAPLAMA-  
STAINLESS STEEL MESH COLUMN COVERING**

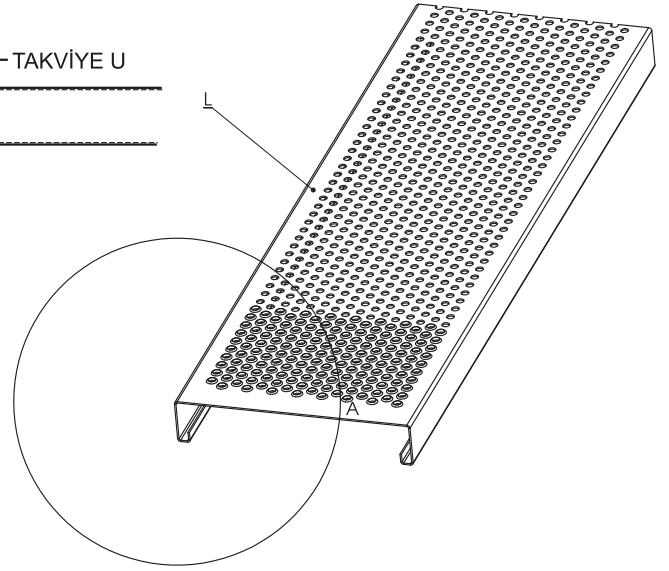
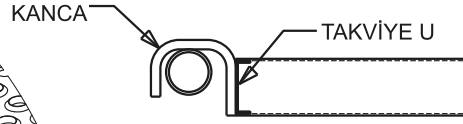
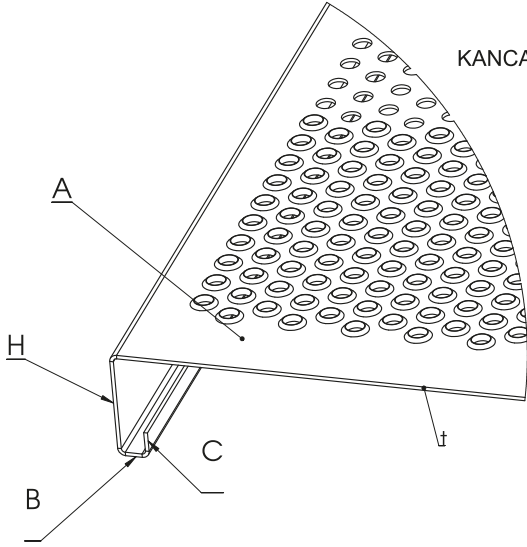


**MAĞAZA ÜRÜN STANDLARI-  
PRODUCT STANDS**



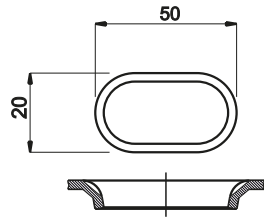
GENMESH CEPHE İMALATLARI  
GENMESH FACADE CLADDINGS





t	A	H	B	C	L
1.50	250	60	20	15	2000
1.80	250	60	20	15	2500
1.80	250	60	20	15	3000
1.80	300	60	35	15	2000
2.00	300	60	35	15	2500
2.00	300	60	35	15	3000

t <sub>1</sub>	A	H	L
1.80 2.00	250	60	2000
	250	60	2500
	250	60	3000
	300	60	2000
	300	60	2500
	300	60	3000

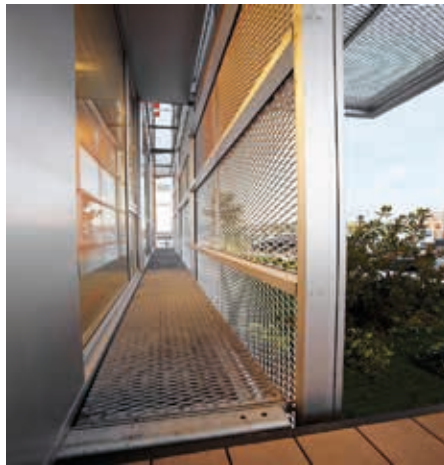
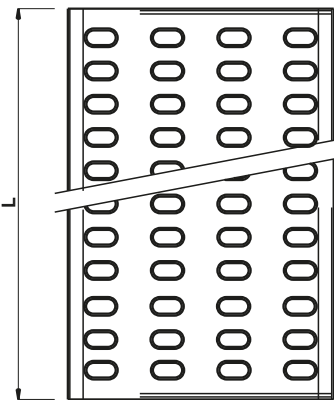
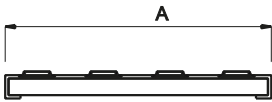
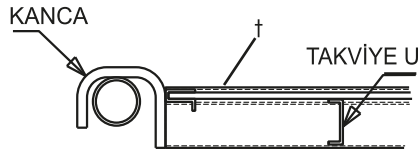


## Yürüme yolları kullanım alanları

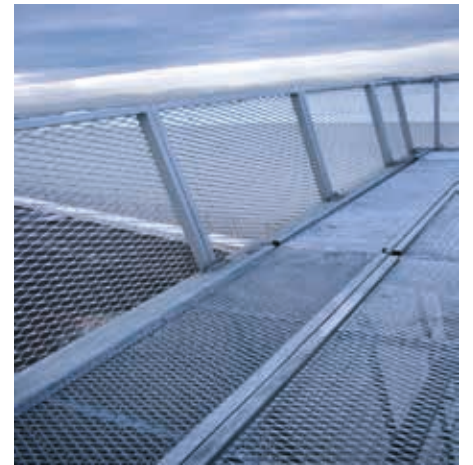
- ✓ Betonarme ve Çelik İnşaat
- ✓ İskeleler
- ✓ Cephe kaplamaları
- ✓ Gemi İnşaa Sektörü
- ✓ Bakım ve Onarım Uygulamaları

## Yürüme yolları genel özellikleri;

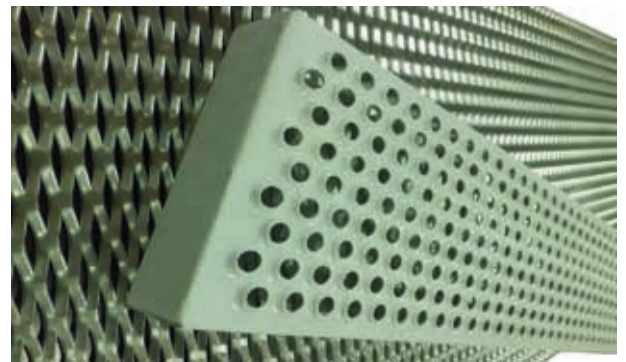
- ✓ Ayak kaydırmazlık özelliği sayesinde iş güvenliği sağlar
- ✓ Hafiftir
- ✓ Taşıma kulpları sayesinde kolayca taşınabilir
- ✓ İstek halinde kenarlara korkuluk konulabilir
- ✓ Yüksek kapasitelerde yük taşıyabilir.



CATWALK İMALATI  
CATWALK PRODUCTS

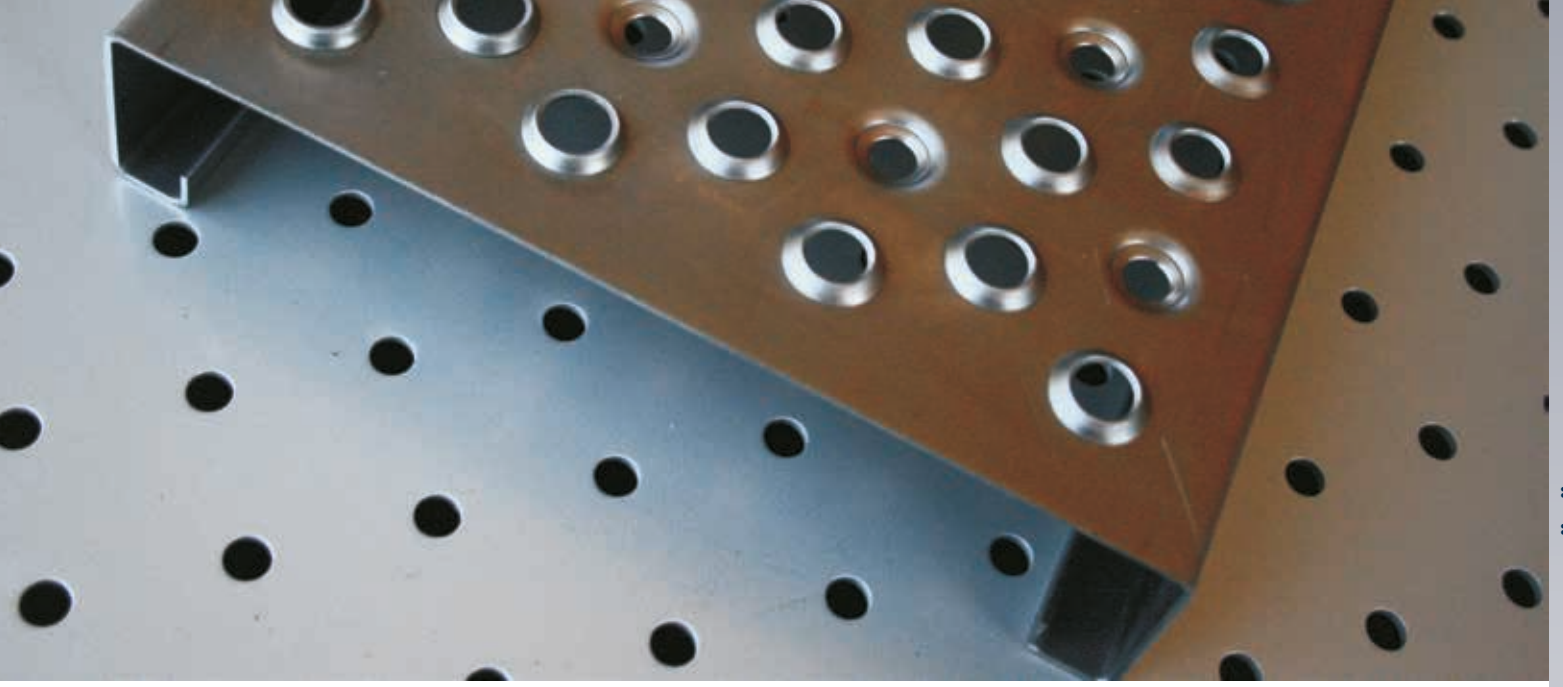


KORKULUK VE YÜRÜME YOLU İMALATI  
RAILING AND WALKING WAY PRODUCT



PROJE BAZLI YÜRÜME YOLU İMALATI  
PROJECT- BASED WALKING WAY PRODUCT

YUVARLAK PATLATILMIŞ YÜRÜME YOLU / ROUND EMBOSSED WALKWAYS



YÜRÜME YOLLARI VE BASAMAKLAR  
WALKING WAYS AND STAIRS

MERDİVEN BASAMAĞI / STAIRS



OVAL PATLATILMIŞ LEVHA / ELLIPTICAL EMBOSSED SHEET



ARAÇ TAŞIYICILAR  
CAR CARRIERS

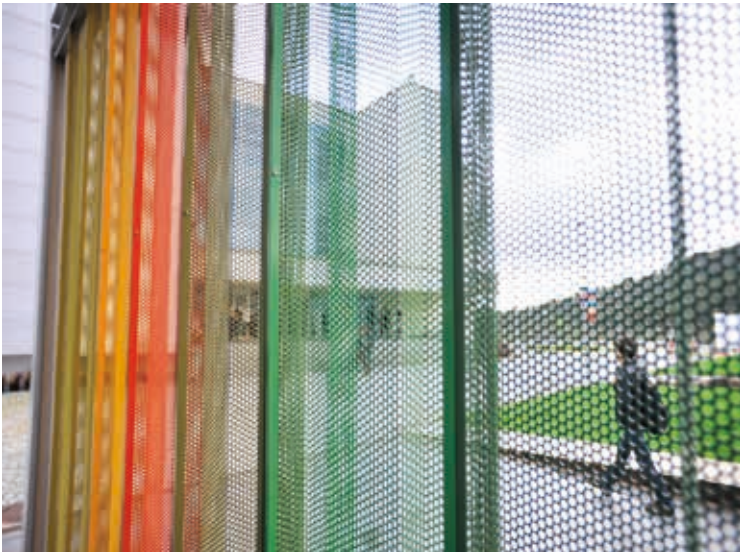


## BİLGİ ÜNİVERSİTESİ



BİLGİ ÜNİVERSİTESİ / MESH ASMATAVAN / NEVZAT SAYIN MİMARLIK  
BİLGİ UNIVERSITY / MESH CEILING

## ÖZYEĞİN ÜNİVERSİTESİ



ÖZYEĞİN ÜNİVERSİTESİ / PERFORE TRAPEZONEL CEPHE / B DESIGN- RMJM MİMARLIK  
ÖZYEĞİN UNIVERSITY / PERFORATED TRAPEZOID FACADE



## PİRİ REİS ÜNİVERSİTESİ



PİRİ REİS ÜNİVERSİTESİ / PERFORE CORTEN& MESH CEPHE VE ASMATAVAN/ KREATİF MİMARLIK  
PİRİ REİS UNIVERSITY / PERFORATED CORTEN& MESH FACADE AND CEILING

## İSTANBUL TEKNİK ÜNİVERSİTESİ



2014 YAPI  
DALI ÖDÜLÜ



İSTANBUL TEKNİK ÜNİVERSİTESİ / UZAKTAN KUMANDA KONTROLLÜ KAYAR PERFORE CEPHE / ÖZSOY MİMARLIK  
İSTANBUL TECHNICAL UNIVERSITY / REMOTE CONTROLLED PERFORATED FACADE

## SÜLEYMAN ŞAH ÜNİVERSİTESİ



SÜLEYMAN ŞAH ÜNİVERSİTESİ / MESH CEPHE / ZAMBAK MİMARLIK  
SÜLEYMAN ŞAH UNIVERSITY / MESH FACADE

## KOÇ LİSESİ

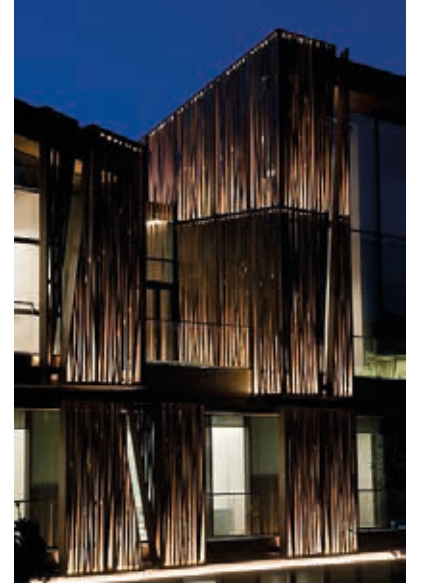


KOÇ LİSESİ / PERFORE CEPHE / DB MİMARLIK  
KOÇ HIGH SCHOOL / PERFORATED FACADE



# İMALAT VE UYGULAMA ÇALIŞMALARI PROJECT BASED DESIGNS

WAF 2013  
OFİS 1. LİĞİ  
ÖDÜLÜ



**SELÇUK ECZA GENEL MÜDÜRLÜK / LAZER KESİM CEPHE / TABANLIOĞLU MİMARLIK**  
SELÇUK ECZA HEADQUARTERS / LASER CUT FACADE



**LOGIPARK / İGLO MİMARLIK**



**MAİ HASTANESİ / MESH CEPHE / KREATİF MİMARLIK**  
MAİ HOSPITAL / MESH FACADE

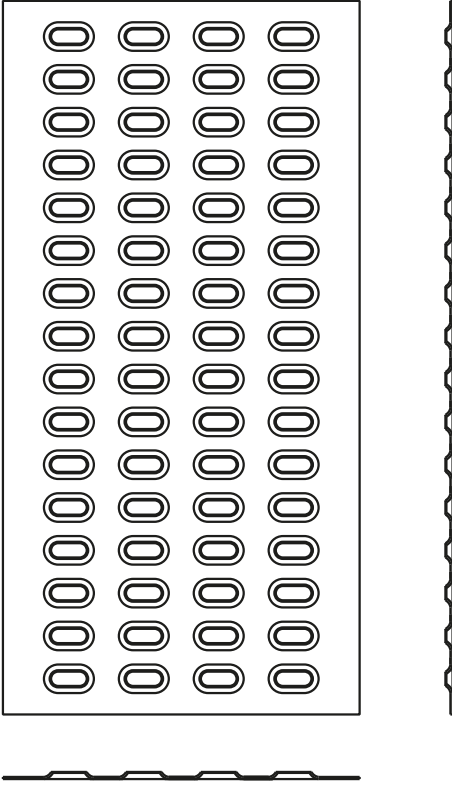


**MARMARA FORUM AVM / MESH CEPHE / TABANLIOĞLU MİMARLIK**  
MARMARA FORUM MALL / MESH FACADE



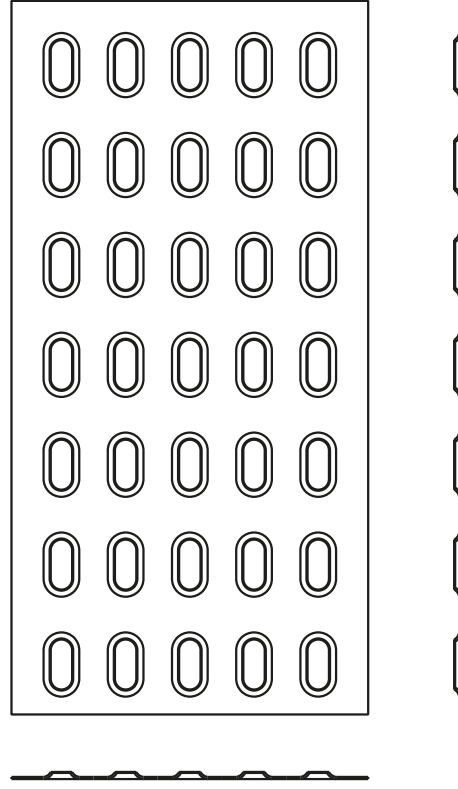
**TÜRK TELEKOM ARENA / MESH ASMA TAVAN /  
ASP MİMARLIK- METE ARAT**  
TÜRK TELEKOM ARENA / MESH CEILING

ARAÇ TAŞIYICI PERFORE  
PERFORATED TRAILER PLATFORMS

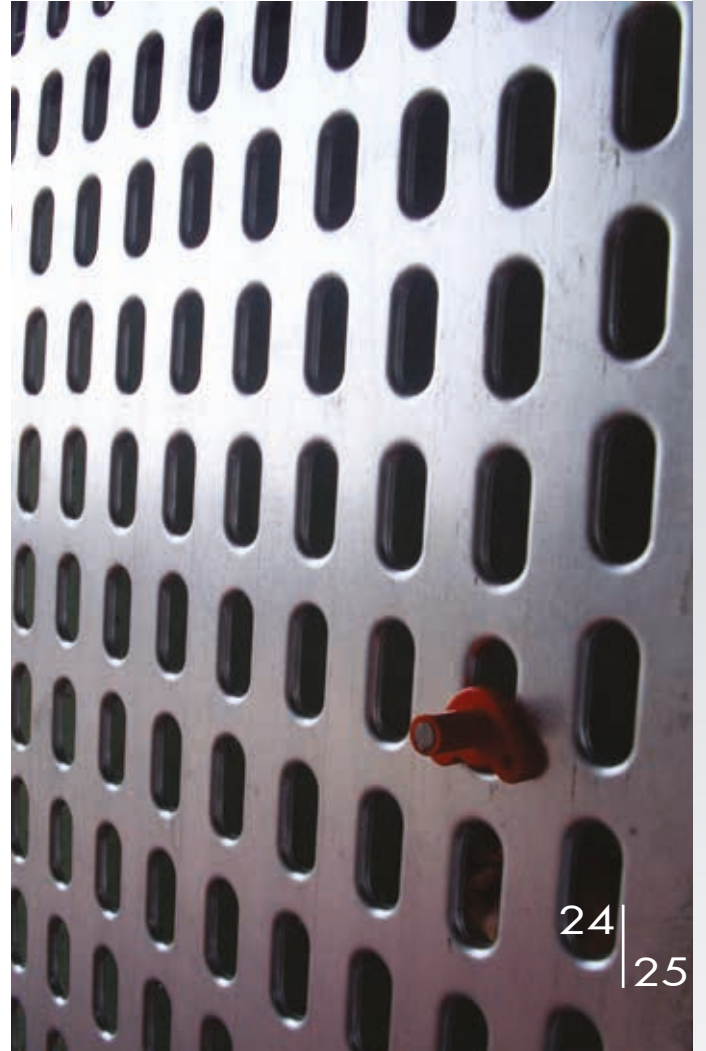


- ✓ ARAÇ TAŞIYAN TIRLARIN DORSELERİNDE
- ✓ RAMPALARDA
- ✓ PLATFORM, SAHANLIK VE MERDİVEN BASAMAKLARINDA

ELBİSE ASKILIĞI  
TEXTILE TRANSPORTATION



- ✓ TEKSTİL TAŞIMACILIĞI YAPAN ARAÇ DORSELERİNDE  
(ÜTÜLÜ MALZEME SEVKİYATI)



1986'DAN GÜNÜMÜZE - SINCE 1986



**KASSO**

MÜHENDİSLİK PREFABRIKE YAPIM SİSTEMLERİ  
SANAYİ ve TİCARET LİMİTED ŞİRKETİ

[www.kasso.com.tr](http://www.kasso.com.tr)



**KASSO**

DIŞ TİCARET LİMİTED ŞİRKETİ

[kasso@kasso.com.tr](mailto:kasso@kasso.com.tr)

**MERKEZ FAB.:**

İstanbul Anadolu Yakası Organize Sanayi Bölgesi

2. Sokak No: 5 P.K.: 34953 Tuzla / İSTANBUL

Tel : (0216) 593 14 85 pbx

Fax: (0216) 593 14 89