

SSAB Weathering and COR-TEN®

**CLASSIC  
STEEL CHOICES  
FOR BUILDINGS  
AND ART**



**SSAB**

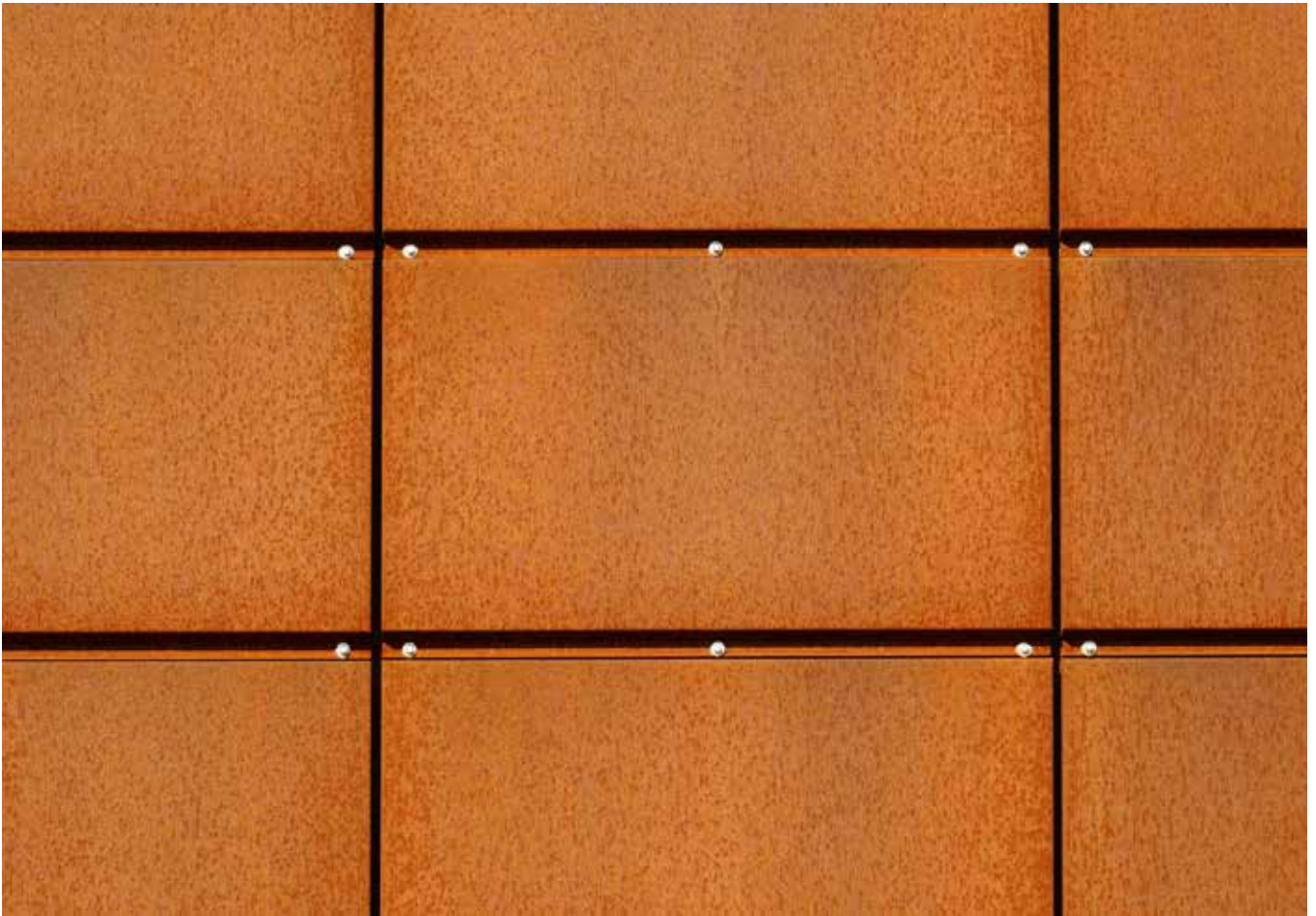


# ADDING UNIQUE FEATURES TO EVERY ARCHITECTURAL PROJECT AND ART WORK

Many architects choose to work with SSAB Weathering and COR-TEN® – whether it's for architectural steel panels or unique designs. The color makes it blend in nicely among historical architecture, such as brick wall houses.

Unlike conventional steel, weathering architectural steel has a matt surface, which reduces typical metal reflections. The distinct bronze-like appearance, which changes over time as the

surface ages, is created by the location's weather and climatic conditions. This oxidation process ensures that every project becomes unique.



# LOW ON MAINTENANCE, HIGH ON DESIGN

SSAB Weathering and COR-TEN® are high-strength, low-alloy weldable structural steels with exceptional resistance to the elements.

The chemical composition of the steel allows for the creation of a layer of rust that coats a building without altering the mechanical characteristics of the steel.

This rust layer, patina, protects architectural steel products against further corrosion. It also delivers a unique finish that stops most people in their tracks. And the steels are more environmentally friendly than traditional steel.

Few things can compete with SSAB Weathering and COR-TEN® steels for an architect or designer who wants to create a building or sculpture with impact.

A building of rust in a city of glass and concrete or a field of green is a thing of beauty and contrast that stands for decades, requires minimum upkeep, and leaves a lasting impression on all who see it.

# EASY ON THE ENVIRONMENT

SSAB Weathering and COR-TEN® steels are strong, long-lasting and more environmentally-friendly than conventional steel.

They are 100% recyclable and, unlike other steel types, do not require anti-corrosion treatment. In some applications they are even used as a substitute for impregnated wood.

Since weathering steels are usually not painted they require practically zero maintenance throughout their lifespan.

SSAB Weathering steels are ideal for strong and light structures that last. They have a yield strength from 500 to 960 MPa and a tensile strength between 580 and 1000 MPa.



# COR-TEN® SPEAKS FOR ITSELF

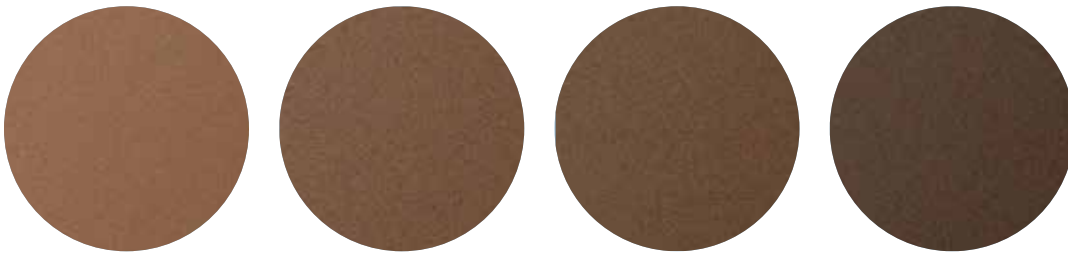
COR-TEN® is the world's most well-known weathering steel brand for buildings and structures.

COR-TEN® has for decades been a favorite façade material among architects and designers. The combination of high strength, aesthetic appearance, low maintenance and flexibility make it an ideal choice for projects of all shapes and sizes.

COR-TEN® is a licensed brand belonging to US Steel Corporation.



# THE COR-TEN<sup>®</sup> PATINA FORMATION PROCESS



At first, the steel begins to rust in the same fashion as ordinary mild steel when exposed to wet and dry conditions.

As time passes, the rust layer transforms into a patina, and the color changes from fresh, newly developed orange-brown, to light or dark brown.

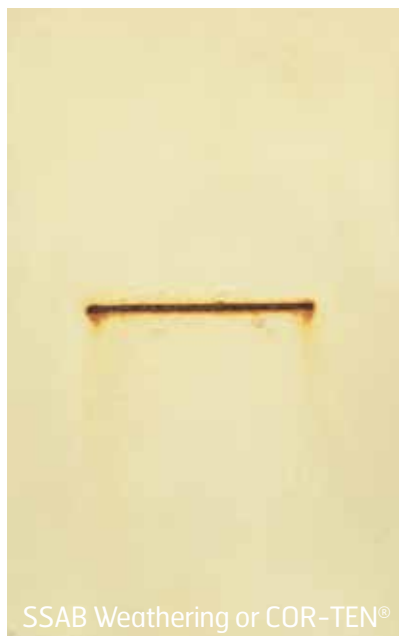
The speed of change and the final color of the steel depend on the atmospheric conditions of a site and the level of

pollution. Frequent cycles of wet and dry conditions will also speed up oxidation.

The entire oxidation process usually takes two to six years. If conditions are consistently wet or dry, a uniform patina will not form. For this reason, weathering steels should not be used indoors.



Normal steel



SSAB Weathering or COR-TEN<sup>®</sup>

## Great for painting

When painted, the weathering steel texture ensures a great finish regardless of color.

SSAB Weathering and COR-TEN<sup>®</sup> steels also have a self-healing effect that minimizes any corrosion creeping under the paint.

# OPTIMIZE YOUR BUSINESS CONTACT SSAB

 +46 243 729 29

 [techsupport@ssab.com](mailto:techsupport@ssab.com)



SSAB is a Nordic and US-based steel company. SSAB offers value added products and services developed in close cooperation with its customers to create a stronger, lighter and more sustainable world. SSAB has employees in over 50 countries. SSAB has production facilities in Sweden, Finland and the US. SSAB is listed on Nasdaq Stockholm and has a secondary listing on Nasdaq Helsinki. [www.ssab.com](http://www.ssab.com). Join us also on social media: Facebook, Instagram, LinkedIn, Twitter and YouTube.

## SSAB

P.O. Box 70  
SE-101 21 Stockholm  
SWEDEN

Visiting address:  
Klarabergsviadukten 70

Telephone: +46 8 45 45 700  
Email: [contact@ssab.com](mailto:contact@ssab.com)

[www.ssab.com](http://www.ssab.com)

**SSAB**