

VIDAR CLAY SHINGLES



KOMPROMENT
DANISH BUILDING DESIGN

VIDAR

Clay Shingles





VIDAR - CLAY SHINGLES

- Genuine world-class tile
 - tile clay shingle for light façade constructions
- 40 different colour and surface options – choose YOUR design
- Clean and elegant design
- 100% inorganic materials
- Zero maintenance
- 100% integrated solar panels
- Long service life
- Standardised flashing systems
- Designed in accordance with the Cradle to Cradle principles



CLAY SHINGLES developed in collaboration with ONV Arkitekter and JAJA Architects

VIDAR
Clay Shingles

**VIDAR - Clay Shingles façade system
Teglmosen in Albertslund, Denmark**

Material: Aarhus, yellow-dark reduced, surface B-grooved

Turnkey contractor: Scandi Byg

Architect: ONV Arkitekter + JAJA Architects

Owner: KAB









VIDAR - Clay Shingles façade system
Fasanskellet in Ishøj, Denmark

Material: Chelsea, black-brown reduced, surface B-grooved
Turnkey contractor: Scandi Byg
Architect: ONV Arkitekter + JAJA Architects
Owner: KAB



VIDAR - Clay Shingles façade system
Robinievej in Albertslund, Denmark

Material: Manchester, blue reduced, surface B-grooved
Contractor: Scandi Byg
Architect: ONV Arkitekter + JAJA Architects
Owner: KAB









**VIDAR - Clay Shingles façade system
Klakholmen in Ballerup, Denmark**

Material: Westerwald, red-brown reduced, surface A-rustic
Contractor: Scandi Byg
Architect: Arkitema Architects



**VIDAR - Clay Shingles façade system
Ryhaven in Hasle Århus, Denmark**

Material: Manchester, blue reduced, surface A-rustic

Contractor: Scandi Byg

Architect: Ravn Arkitektur A/S

Owner: Østjysk Bolig









VIDAR - Clay Shingles façade system
Tikøb, Denmark

Material: Clay Shingles Chelsea, black-brown reduced surface A-rustic
Architect: tegnestuen LoKal



VIDAR - Clay Shingles façade system
Terrassehusene, Nørregade, Odense, Denmark

Material: Oslo, pure white surface A-smooth
Material: Aarhus, grey-dark reduced surface A-rustic
Contractor: Arkitekt gruppen
Architect: ADEPT









VIDAR - Clay Shingles façade system
Længehuset, Rundholdtvej, Copenhagen, Denmark
Material: Manchester, blue reduced surface A-rustic
Contractor: Bonava
Architect: Arkitema Architects



VIDAR - Clay Shingles façade system
Bettynansens Allé, Frederiksberg, Denmark

Material: Manchester, blue reduced surface A-rustic

Architect: ONV Arkitekter





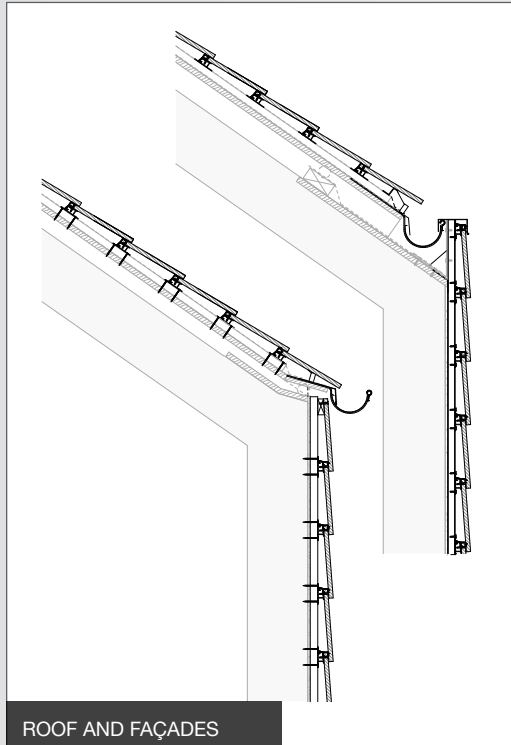




KOMPROMENT

Documented green DNA

Facades for future sustainable projects



ROOF AND FAÇADES



VIDAR - CLAY SHINGLES

Cradle to Cradle certified™ Silver level

VIDAR
Komproment ApS
Version 3.1
Renewal 08 Jan 2019

SILVER BASIC BRONZE SILVER GOLD PLATINUM

	MATERIAL HEALTH	✓
	MATERIAL REUTILIZATION	✓
	RENEWABLE ENERGY	✓
	WATER STEWARDSHIP	✓
	SOCIAL FAIRNESS	✓

The sign is aluminum (ALU, AlMg 5754)
All materials used to print this sign are compliant with the recent RoHS directive 2011/65/EU as amended up to 2015/863/EU

VIDAR - MATERIAL PASSPORT - "The black BOX" **KOMPROMENT**

SILVER

Material content in the facade system:

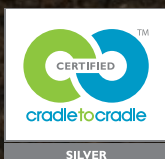
1: Pine wood, heat treated	5: R-200059,ABS; R-2000045, TPE	9: ALU, EN AW 6060 T6 (AlMgSi)
2: A4 / AISI 316	6: A2 / 1.4301 (AISI 304)	10: ALU, EN AW 6060 T6 (AlMgSi)
3: A4 / AISI 316	7: 100% Clay	11: Neutral Silan Polymer (SMP) 1.komp.
4: ALU, EN AW 6060 T6 (AlMgSi)	8: A2 / 1.4301 (AISI 304)	



TECHNICAL DATA

CLAY SHINGLES

Pcs. per m ²	43
Dimension	240x113x14 mm
Weight	0.7 kg per Clay Shingle
Moisture absorption	max 0.4%
Burning	+ 1,200 degrees
Batten gauge	210 mm +/- 3 mm



VIDAR - Clay Shingles is
Cradle-to-Cradle®-certified
to silver level.



VIDAR - FAÇADE SYSTEM



VIDAR - Clay Shingles is a rustic tile façade system with surface variations for cladding existing and new buildings. The system is flexible with respect to façade look and re-insulation level and allows for integration of solar panels in the new façade.

VIDAR - Clay Shingles can be mounted directly on the existing façade, wooden frames or on an aluminium back system.

VIDAR - Clay Shingles is designed as a light outer wall of tile ideal for both new construction and renovation work.

VIDAR - Clay Shingles is produced by some of the world's best raw materials in clay, Westerwald clay.

VIDAR - Clay Shingles is made in nine architect chosen colours, and each colour has three different surfaces/structures.

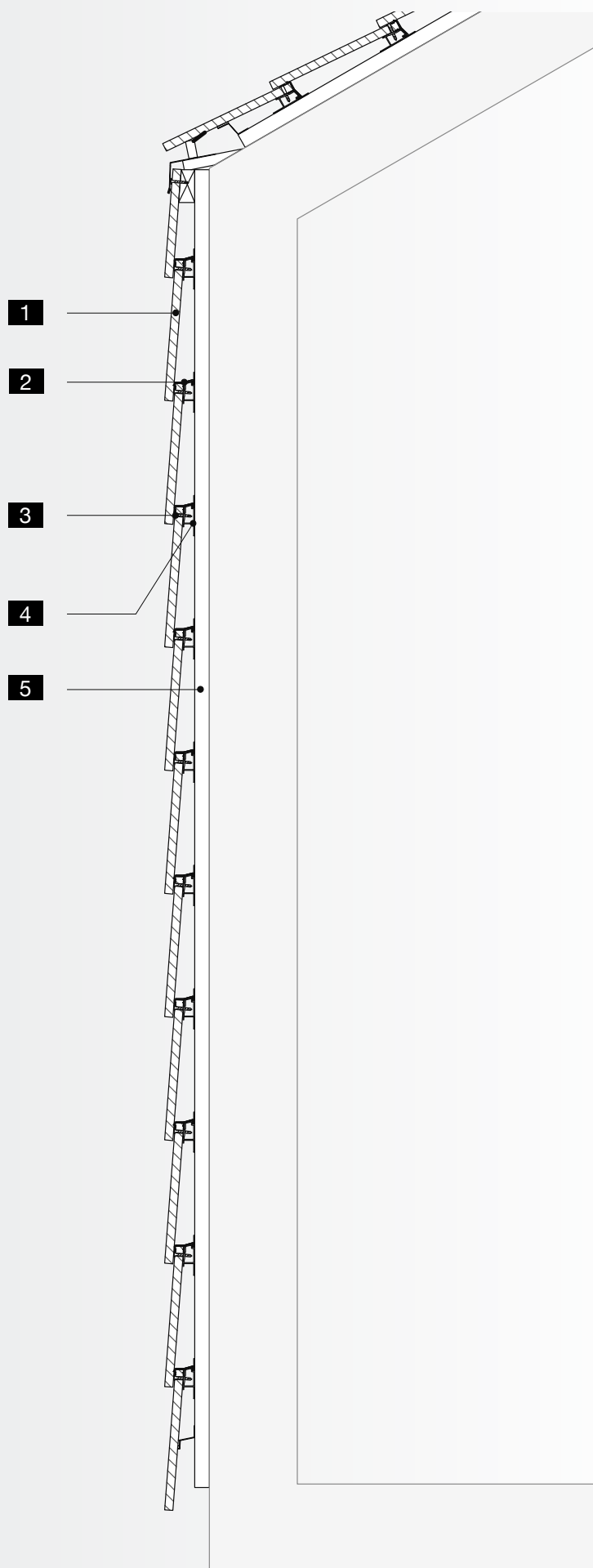
For larger projects, you can design your own Clay Shingles. Own colour and own structure.

VIDAR - Clay Shingles can be delivered as a system solution with a complete installation system and a 100% inorganic range of materials.

VIDAR - Clay Shingles is developed in accordance with the Cradle to Cradle principles.

The burning of the Clay Shingles produces an incredibly beautiful diversity of nuances in each of the colours.





CAN BE USED BOTH FOR FAÇADE AND ROOF

- 1** Clay Shingles 14x113x240 mm
- 2** Komproment mounting profile for Clay Shingles
- 3** Komproment A2 system screw
- 4** Komproment system batten
- 5** Spacers, 25 mm
(covered with cardboard on roof)



VIDAR - CLAY SHINGLES Westerwald, red-brown reduced
surface A-rustic and surface B-grooved



VIDAR - CLAY SHINGLES Aarhus, yellow-dark reduced
surface A-rustic and surface B-grooved



VIDAR - CLAY SHINGLES Manchester, blue reduced
surface A-rustic and surface B-grooved



VIDAR - CLAY SHINGLES Chelsea, black-brown reduced
surface A-rustic and surface B-grooved



VIDAR - CLAY SHINGLES Oslo, pure white
surface A-smooth and surface B-grooved



VIDAR - CLAY SHINGLES Aarhus, grey-dark reduced
surface A-rustic and surface B-grooved



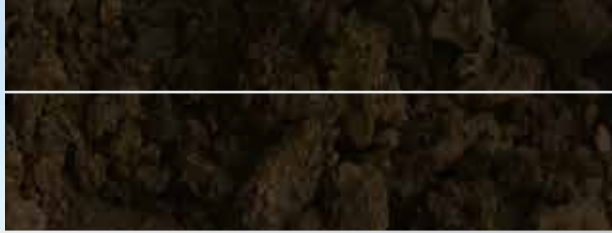
VIDAR - CLAY SHINGLES Aarhus, grey
surface A-rustic and surface B-grooved



VIDAR - CLAY SHINGLES Aarhus, silky black
surface A-rustic and surface B-grooved



VIDAR - CLAY SHINGLES Faro, black
surface A-smooth and surface B-grooved



VIDAR

Clay Shingles

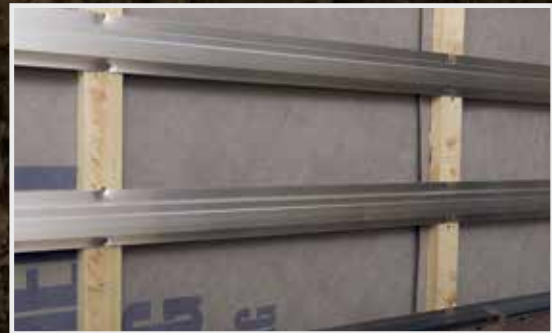
VIDAR - Clay Shingles can be mounted directly on any façade, either on wood or with an aluminium mounting system.

Vertical wooden counter battens are mounted on the facade – battens can also be delivered in aluminium.

Aluminium system battens are designed with a special track for attachment of the clay shingles and are installed horizontally onto the counter battens.

The shingles are mounted as a 5-piece sound reducing element and this element is attached using special stainless steel screws for every shingle.

Please see www.komproment.com for latest version of complete assembly guide.



KOMPROMENT

Documented green DNA

Facades for future sustainable projects



KOMPROMENT is Cradle to Cradle certified™ to silver level

The products included in the certification are Vidar Clay Shingle, D Wall, Zappa, Climate Cover and traditional natural slate for Nordic roof structures. The certification through Cradle to Cradle was obtained because no harmful substances were used in manufacturing the products and because they consist of components that can be dismantled. The façades are all made with a MATERIAL PASSPORT, so future generations will know exactly how all of the components are to be re-used.



KOMPROMENT is Cradle to Cradle certified™ to silver level

KOMPROMENT:
Environmental Award 2018,
the Danish Building Industry's,
SME STAR AWARDS 2018



VIDAR

Clay Shingles

■ Vidar Clay Shingle is an economically beneficial roof and façade covering, complete with mounting system, which with a shingle slip thickness of just 14 mm, is well suited for structures with a light outer wall that live up to the strictest insulation requirements, but where excessively thick outer walls are unwanted.

CLIMATE COVER

Natural Slate

■ Climate Cover is a universal system for roofs and façades which is based on natural slate. The system enables the integration of solar panels aligned with the primary roof and façade cladding and has concealed outlets, which removes the need for roof caps.

D WALL

Natural Slate

■ The D Wall façade system with natural slate is the only mounting system on the market for natural slate for both roofs and façades with completely invisible slate attachment, resulting in a very elegant architectonic expression. Solar panels can also be completely integrated.

ZAPPA

Natural Slate

■ Zappa façade system for natural slate with visible attachments is Denmark's fastest mountable façade system for natural slate. The natural slate is held in place by two small slate hooks in a special stainless steel design that matches the colour of the slate. Solar panels can be integrated in the façade.



■ The work with Cradle to Cradle forms the basis of the CSR (Corporate Social Responsibility) work at KOMPROMENT. The work and framework for our efforts originate from the UN's Global Compact, which is the world's largest voluntary initiative for corporate social responsibility.



komproment.dk



May 2019



KOMPROMENT

DANISH BUILDING DESIGN

KOMPROMENT · Jellingvej 11 · DK-9230 Svenstrup · Tlf.: +45 96 52 07 10
salg@komproment.dk · www.komproment.dk