



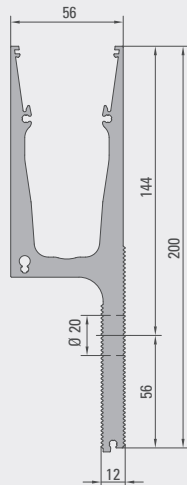
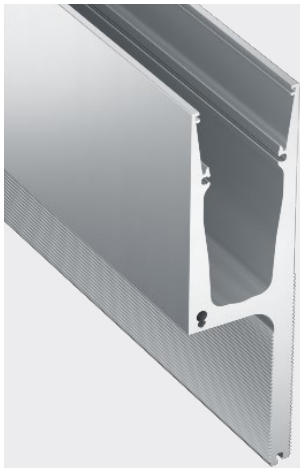
GLASSLINE

Systemprofil

BALARDO *hybrid* - Side 3

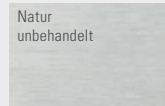
Ganzglasgeländersystem

Systemprofil Side 3



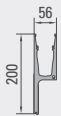
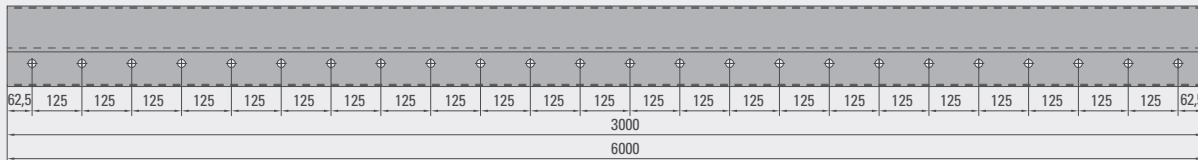
Material: Aluminium (EN AW-6063 T66)
Lieferlänge: 3.000 mm, 6.000 mm
Glaseinstand: ca. 100 mm
Glas: VSG 2 x 8 mm, 2 x 10 mm
PVB / SGP: 1,52 mm

Oberflächen:

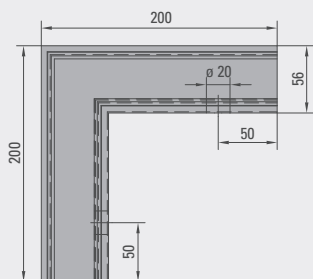


Befestigungsabstand		
privater Bereich 0,5 kN/m	öffentlicher Bereich 1,0 kN/m	öffentlicher Bereich 2,0 kN/m
a = 500 mm	a = 250 mm	a = 125 mm

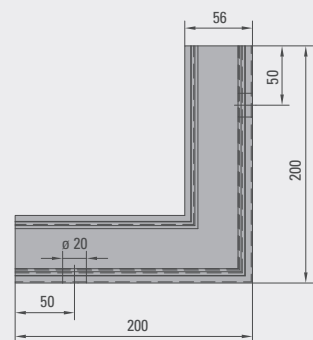
Bohrbild



Außenecke



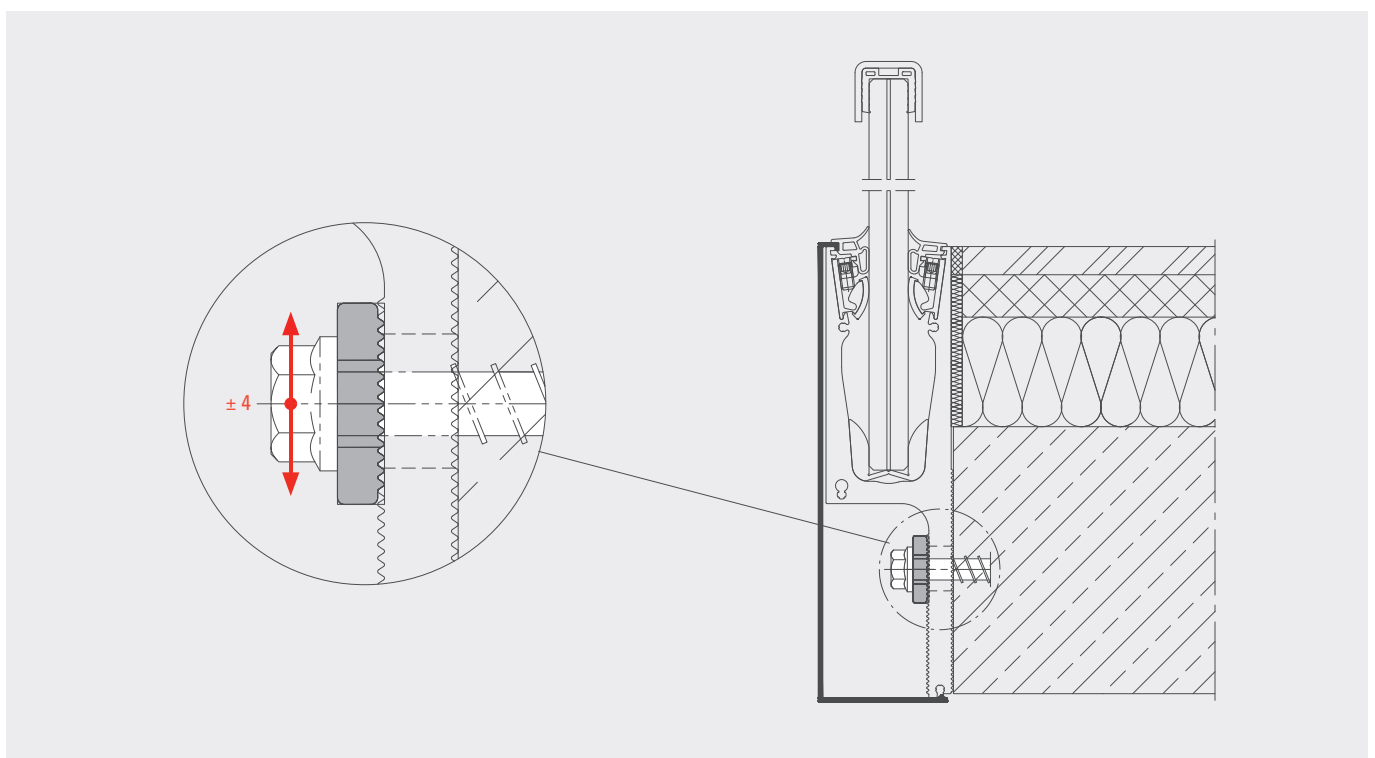
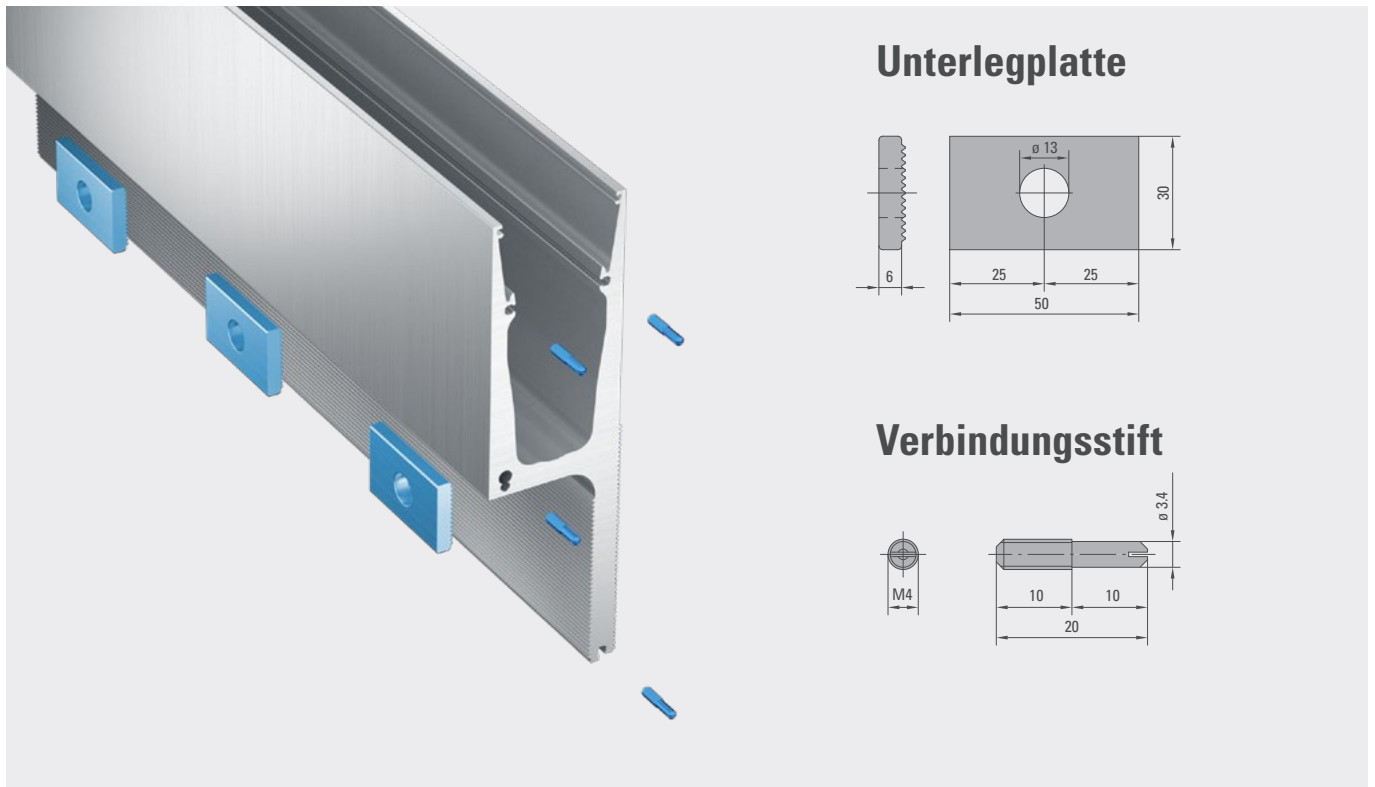
Innenecke



Alle unsere Profile verfügen über das Allgemeine bauaufsichtliche Prüfzeugnis und sind LGA geprüft.

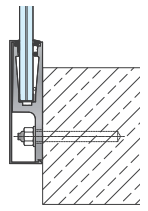
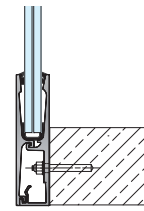
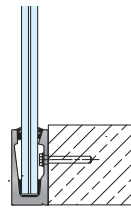
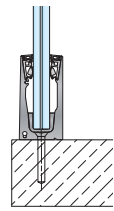
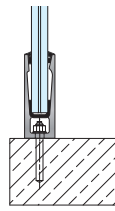
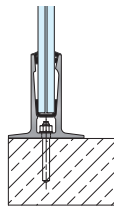
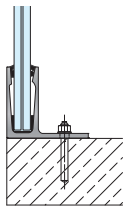


Profil mit Unterlegscheiben



BODENMONTAGE

SEITENMONTAGE



Top 1

Top 2

Top 3

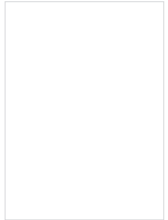
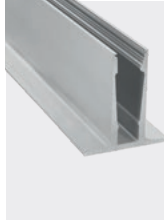
TOP 4

Side 1

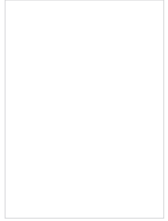
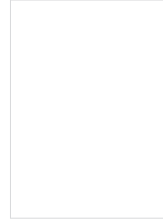
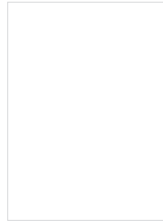
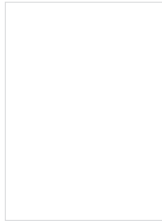
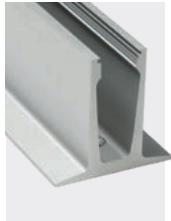
Side 2

Side 3

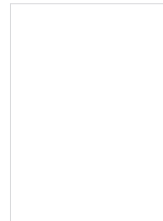
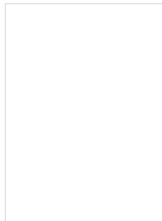
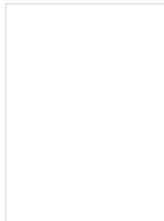
BALARDO core



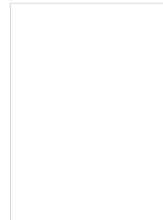
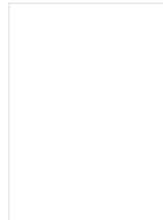
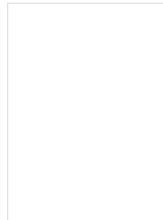
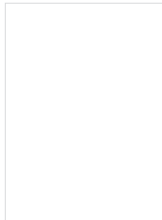
BALARDO core hd



BALARDO hybrid



BALARDO smart



GLASSLINE

GLASSLINE GmbH

Industriestraße 7-10

74740 Adelsheim

Telefon +49 (0) 6291 6259-0

Fax +49 (0) 6291 6259-11

info@glassline.de

www.glassline.de

Das Systemhaus für rahmenlose Glasarchitektur

Als führender Anbieter entwickelt, fertigt und vertreibt GLASSLINE hochwertige Systemlösungen in den Bereichen Punkthaltesysteme, Ganzglasgeländeranlagen, rahmenlose Vordachkonstruktionen und Systeme mit thermischer Trennung zur sicheren Befestigung von Anbauelementen an Gebäudehüllen.

