



COLLECTION
2025



Your carpet, our tradition.

We are Tapibel, a **passionate carpet manufacturer** based in **Pelt (Belgium)**. We offer modular flooring concepts for every space. Our goal? Sparking creativity with our **innovative and sustainable collections**. Available in carpet tiles, wall-to-wall carpet and rugs. Get inspired!

Common thread of tradition and respect

Everything starts with the yarn and the fibres. Every carpet and every floor covering starts as a bobbin of basic yarn, comprising millions of yarns that are processed into one whole. The people behind Tapibel know the world of carpets like the back of their hands. We have been true **carpet masters for over fifty years**, producing both tufted and needle-felt carpet. We have been passing on the knowledge of carpet production **from generation to generation** since 1970.

You can see, hear and feel **our tradition**: in the authentic factory, in the innovative products, but above all, in the people behind Tapibel. What is our common thread? Respect. Respect for each other, our products, the machines and of course, our customers. The relationships we establish with customers and employees are always **sustainable, open and honest**.

We work with machines to manufacture our carpets and carpet tiles, but **humanity is the central theme**. Our employees operate the machines, fill them, adjust them and check the carpets carefully. It's all in the details. Quality and service are key, loose ends (and loose threads) don't stand a chance. Most of our tufted carpets are intended for the contract market, specifically for use in offices, hotels and public buildings. Our needle-felt carpet is in demand in the event sector.



Strong cohesion

The yarn is processed in the tufting machine. Whether we make a loop pile or cut pile, we always produce a strong and durable carpet. Our employees and customers also strengthen our operation. We prefer to call them **“family”** because it describes our relationship so much better. They are inextricably linked to Tapibel and have worked for decades to make the company what it is today. Each and every day. Thanks to them, we can offer our high-quality products and services.

Flexible connection

The carpet is finished with a strong adhesive compound that holds and connects all the yarns or fibres together. The result is that it forms one whole and remains in good condition. **Flexibility and connection** form the basic yarn of Tapibel. We are prepared to develop and make tailored solutions to our customers. Do you need a smaller number of square metres or maybe more? Do you need a special carpet for an event? We can talk about it. We want to get to know you as a customer and build a strong bond. And we prefer to do that informally.

Global carpet

The result is global carpet. We use the word “global” because Tapibel is a Belgian carpet producer with an international character. We serve customers all over the world. We have customers as far afield as Finland to Cyprus, and from Iceland to Dubai. That means that we naturally take the traditions, customs and trends of the countries to which we export our products into account.

Our carpets and approach are a great fit for today's world because **we consider ecology and sustainability** to be of paramount importance. We are always looking for ways to make our carpet production more sustainable and ecological. Find out more about all our sustainable initiatives here. We keep our promises and make our promises achievable and tangible.

From basic yarn to carpet, Tapibel is a known, reliable partner in the carpet industry. We continue innovating and focussing on (the carpet of) the future without losing sight of our common values.



Twise: sustainable initiatives for a greener planet

T W I S E



Our carpets and our approach fit into today's world as we are committed to ecology and sustainability. We are always looking for ways to make our carpets and carpet production more sustainable and ecological. We make this promise a reality with concrete **ecological solutions for a more sustainable modus operandi.**

Discover Twise, Tapibel's sustainability brand.

Why Twise?

1. Tapibel is "wise" to produce greener carpets.
2. All sustainable solutions contain recyclable material.
We give it a second (and third, fourth, ...) life.

The result?

A more sustainable and ecological carpet, from the yarn to the backing.

As a family business, we also think of the next generations. Thanks to these adjustments they can enjoy a greener world and greener carpet.

Ecofuse

The adhesive



Ecofuse is our **ecological alternative to the traditional latex adhesive** compound in wall-to-wall carpet, carpet tiles and rugs. We replace the latex with a sustainable, post-consumer product called PVB (PolyVinyl Butyral), extracted from used car windows and laminated building glass.

The benefits



of sustainable origin



non-toxic



future-proof



The switch to PVB results
in a latex reduction of
500 tonnes!



Scan the QR code
and discover the PVB
production process!

Ecofuse in our carpets

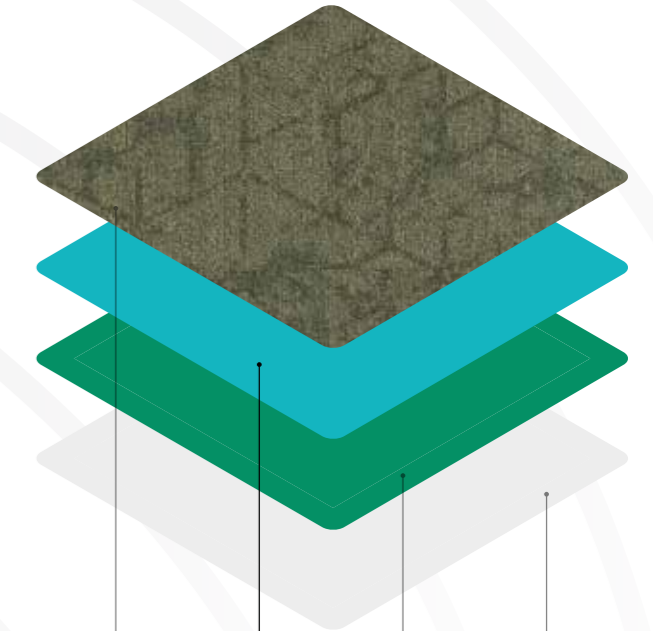
At Tapibel, we use Ecofuse in many of our carpets. Both in wall-to-wall, in carpet tile and rug.

Precoat

The first adhesive layer between yarn and primary backing to ensure that the yarns bond firmly.

Secondary backing

A second adhesive layer is applied to glue the action or felt backing onto the actual carpet. This final process ensures that the wall-to-wall carpet obtains more body and rigidity.



1

Yarn

2

Precoat
Ecofuse

3

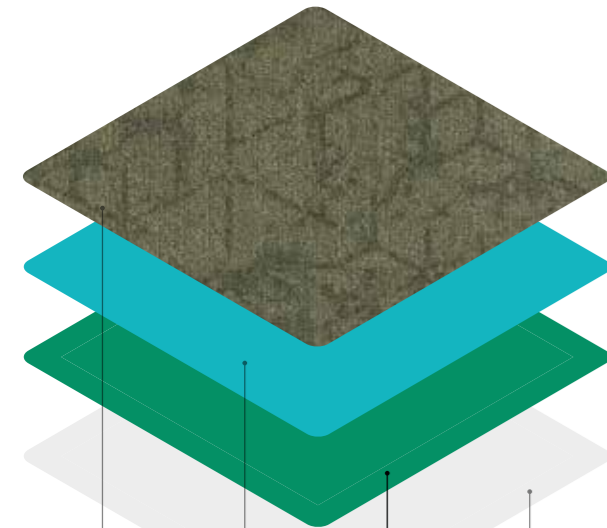
Greenbase

4

Cover sheet

Greenbase

The modified bitumen backing



1

Yarn



2

Precoat
Ecofuse



3

Greenbase

4

Cover sheet

Greenbase, short for modified bitumen, is a more sustainable solution for carpet tile backing. It consists of **70% recycled materials** (diverted from a waste stream of limestone mining) which makes it less harmful to the planet. Greenbase guarantees both dimensional stability and strength in the final product.

70%
recycled
materials



ECONYL®

The yarns



The yarns of several of our collections are made of ECONYL®. The material is made of **100% renewable Polyamide 6 or nylon**. ECONYL® has exactly the same properties as standard nylon with a more durable edge: it can be regenerated indefinitely without loss of quality.

By reusing the materials the ECONYL® yarn contributes to a **circular economy**.

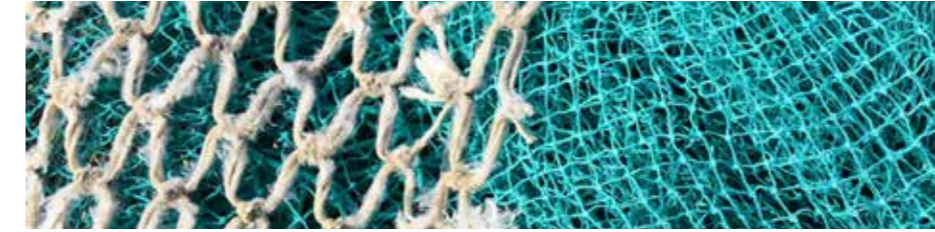


Currently, **25%**
of **the yarns** we use in
production are **ECONYL®**.



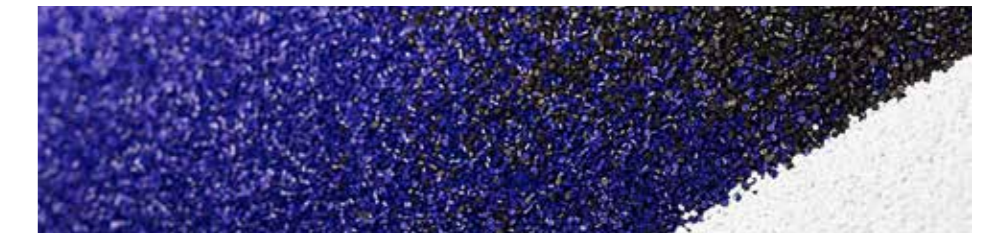
Compared to virgin yarns,
the **CO₂ emissions** of ECONYL®
are reduced by **90%**.

The regeneration process of ECONYL®



1. Rescue

We collect waste (fishing nets, dust scraps, old carpets, etc.). The materials are cleaned and sorted.



2. Regenerate

After a thorough regeneration and purification process, the nylon waste is returned to its original state. The raw material now consists of pellets and dispersions.



3. Remake

ECONYL® regenerated nylon is processed into yarns and textile.



4. Reimagine

With this new yarn, manufacturers such as Tapibel can get to work. We create new ECONYL® carpet collections.



Other sustainability initiatives



a large solar panel park on the roof

The 2500 solar panels generate 500 MW/year which represents 35% of our total electricity consumption.



electric charging stations in the car park

We encourage employees and visitors to drive electric. The charging stations in the car park provide a boost.



simultaneous dispatch of samples and orders

We keep polluting transports to a minimum by sending as many orders as possible at the same time.



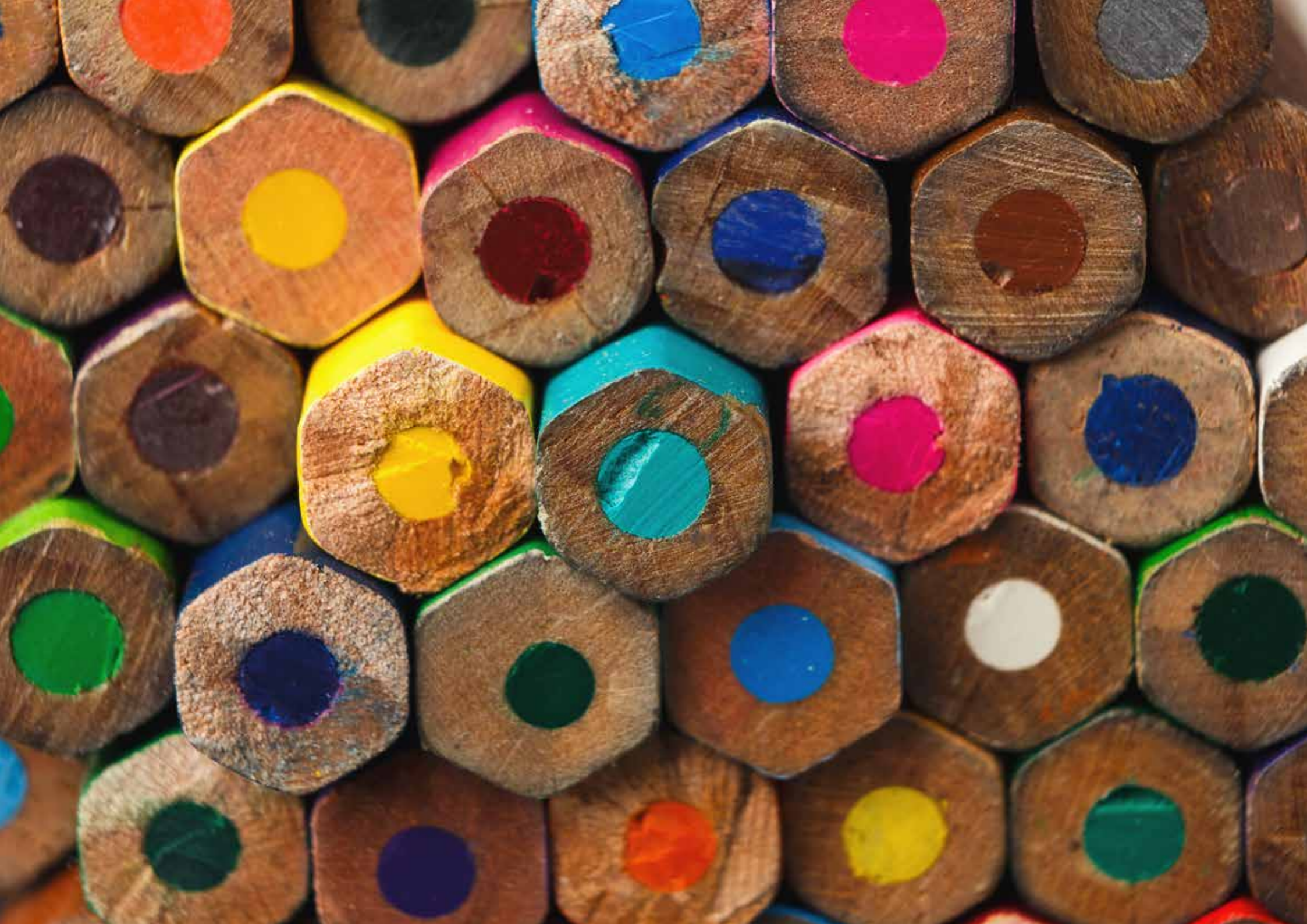
ecological packaging for our carpets

We pack our carpets in recyclable cardboard boxes.



a heat pump for the offices

The heat pump is powered by the solar panels and extracts heat and cold from the constant temperature of the ground. 9000 metres of ducts filled with water in underfloor heating and a climate ceiling ensure a pleasant temperature.



Compose your ideal carpet

The possibilities are endless with carpet. There are dozens of colours available, in different sizes, with or without special finishes. Add to that the myriad of installation layouts from modular carpet tiles and you can **easily create unique floor concepts**.

Because that personal touch is so important, you can create your own carpet at Tapibel, **starting from as little as 200 m²**.

First things first, **the tile format**. Do you choose the larger square tiles (100 x 100 cm) or do you prefer the rectangular tiles of 100 x 50 cm? Want something more special in your interior? The carpet planks of 25 x 100 cm make every room an eye-catcher.

Foot comfort and good acoustics are important advantages of carpet. All our carpet collections are designed with high-quality, durable materials that promote user well-being through good foot comfort and quiet acoustics. Do you want to optimize those two aspects even further? Then choose **Soundbloc** to finish the back of your carpet tile. That way you can enjoy the best that carpet has to offer.

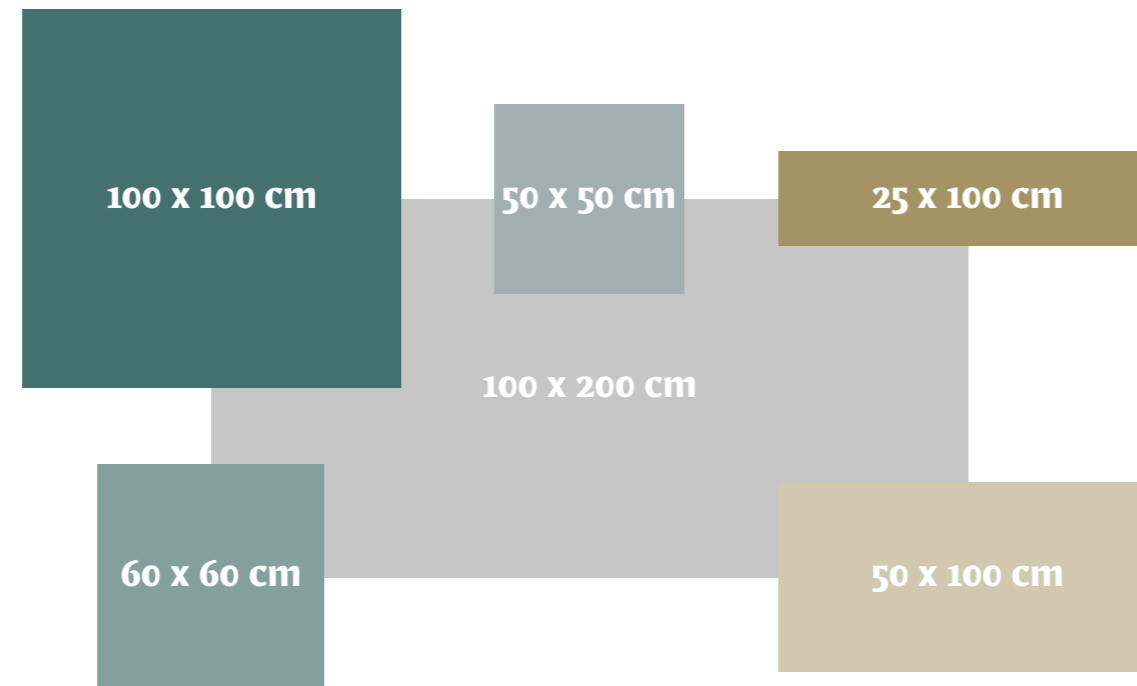
Haven't found what you are looking for in the colour bank of a collection? Tapibel offers the **Cobalt Colour Concept**. Read more about it on the following pages.

Tile format

Today's working environments or hospitality interiors feature more than just one design or colour style. Interior designers prefer a more **sophisticated** and **creative carpet look** that can be combined with hard flooring specifications. A **unique signature** to each of their projects.

At Tapibel we emphasize the importance of this **modular flooring trend**. For projects **exceeding 200 m²**, **special tile sizes** are made available in both Greenbase or Soundbloc backing.

Custom made tile/plank orders may result in an overproduction of about 10% which is mandatory to purchase. Keep this in mind when you calculate and budget your project work.



Soundbloc

Carpet is a natural sound absorber and reduces impact noise while absorbing sound within the space. **All our qualities** have **sound absorbing properties** and **reduce impact noise**. Several collections even reach the α_w 0,35 treshold, reducing sound up to 50%.

Sound is an **important aspect** in many buildings like office environments, hotels, schools and educational facilities, hospitals, nursing homes and healthcare infrastructure. In all these environments, bad acoustics and intrusive sounds can damage the functionality of the environment.

Modern office workplaces should support work optimally and provide a positive ambiance to the employees. Furthermore, they should encourage staff motivation and the power of concentration. Flexible office structures combined with communicative room structures meet those demands best. Create a **productive environment** by **improving room acoustics** with our **Soundbloc technology**. Add an extra layer of comfort under working feet and transform offices into pleasant working spaces.



① Tufted **polyamide top cloth** on a **polyester fleece primary backing** with a **precoat** finish for improved fibre bond

② **Bitumen** with **glass fibre scrim secondary backing** to assure dimensional stability and improve laying properties

③ 500gr **Soundbloc** polyester felt backing to increase acoustic performance, durability and underfoot comfort

Cobalt Colour Concept

28 Cobalt colours to create from

At Tapibel we love a creative challenge and we like to stimulate your imagination. Do you want to create a truly unique floor? Then you have to look beyond our stock collections.

Our **Cobalt Colour concept** will surely fire up your creativity. For projects of over **400 m²**, we can customise any dazzling floor:

Step 1: Choose the desired design from our Cobalt Design or ECONYL® Design Collections.

Step 2: Choose the two Cobalt SDN colours from our 28 available options.

Step 3: Order your customised sample.





Carpet tiles, wall-to-wall carpet & rugs

At Tapibel, we produce carpet collections in three varieties: modular carpet tiles, wall-to-wall carpet and rugs.

Carpet tiles

Carpet tiles offer endless creative possibilities. Create your own modular floor design in no time. You can order standard qualities from stock. The standard carpet tile size is 50x50 cm. Other sizes, including 25x100 cm, are also available in some cases.

Wall-to-wall carpet

There is a wall-to-wall carpet for every room and setting – from a hotel or entrance hall, to a bedroom or event location. Carpet is suitable for both residential and commercial interiors. One of the advantages? The seamless look.

Rugs

Enter a world where luxury takes on new meaning. Tapibel introduces: the Tapibel rugs. Our rugs make a statement in any space. They combine refined aesthetics with sustainability thanks to ECONYL® thread.

Want to know in which version(s) a collection is available?

We indicate this with a symbol in the technical details.

 Carpet tile

 Wall-to-wall

 Rug

Collections



President E 65340
President E 65344
President E 65345



lush
short pile
soft

Almyra

Almyra takes **softness and luxury** to a higher level. This velvet carpet with a soft touch feels wonderful under your feet. Almyra is also an ecological choice; it is made from 100% regenerated ECONYL® nylon yarn. This means you are choosing luxury and sustainability. Despite its softness, Almyra doesn't compromise on performance thanks to the resilient two-ply solution dyed yarn. Choose from 12 warm colours to take any commercial flooring project to the next level.





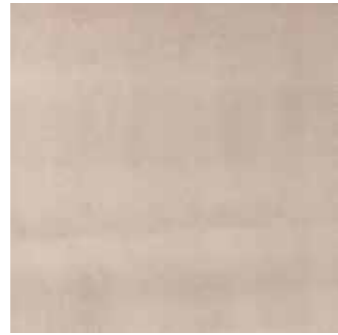
61910 - Polar Bear LRV 57,59



61911 - Bora Bora LRV 44,28



61920 - Walvis Bay LRV 37,52



61922 - Gobi Desert LRV 23,38



61924 - Wyoming LRV 25,59



61940 - Oyster LRV 40,17



61941 - Nordic Stone LRV 45,01



61942 - Lemur LRV 30,72



61943 - Patagonia LRV 23,40



61944 - Koala LRV 19,62



61945 - Lava Beach LRV 6,86



61947 - Misty Fjord LRV 25,53

Technical details

Manufacturing type
tufted 1/10"

Construction
2-ply cut pile

Pile composition
100% PA 6 - SDN - Econyl®

Pile weight
1.200 g/m² (+/-)

Total weight
2.100 g/m² (+/-)

Pile height
6,5 mm (+/-)

Total height
8,0 mm (+/-)

Size
400 - 500 cm

Classification
33 heavy commercial

Fire resistance
Cfl-S1

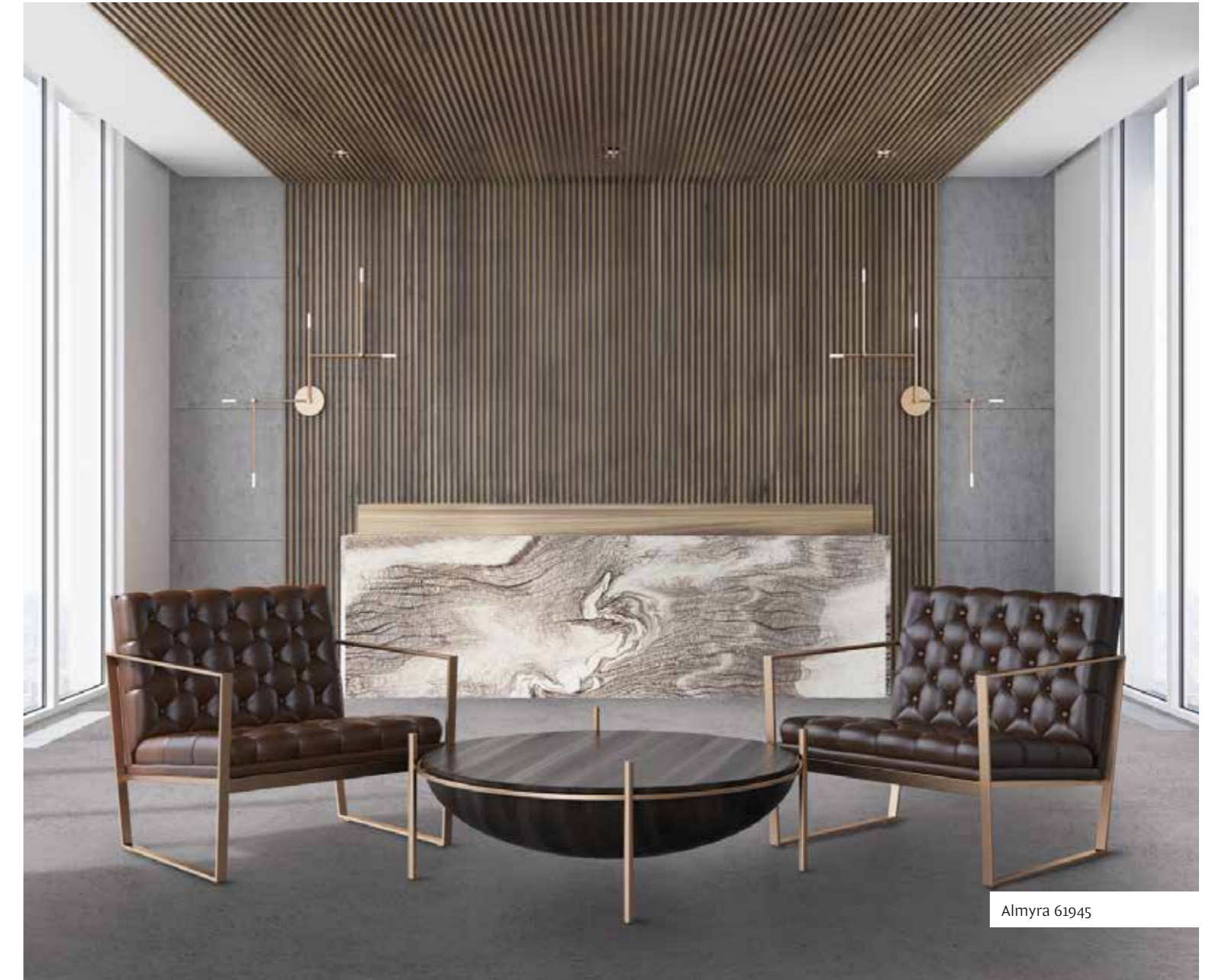
ECONYL®
ENDLESS POSSIBILITIES



Rug



Wall-to-wall



Almyra 61945





Artisan Tweed 64840

minimalist
timeless
tweed pattern

Artisan Tweed

Artisan Tweed has a **minimalistic yet timeless design**. The tweed pattern is inspired by timeless Chanel fabrics and popular designs in hard flooring such as woven vinyl. The ECONYL® yarn makes this collection a sustainable choice. Artisan Tweed is more subtle and fits seamlessly into any timeless interior in just about any setting. Mix and match Artisan Tweed with other sustainable designs, such as Shoreline and Diamond Art.

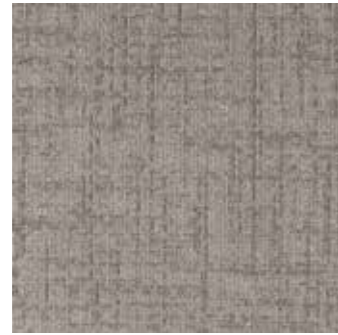


Artisan Tweed 64840
Artisan Tweed 64850





64820 LRV 24,42



64821 LRV 21,86



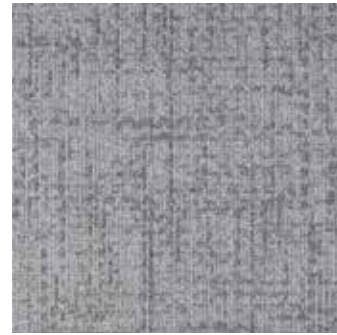
64822 LRV 13,66



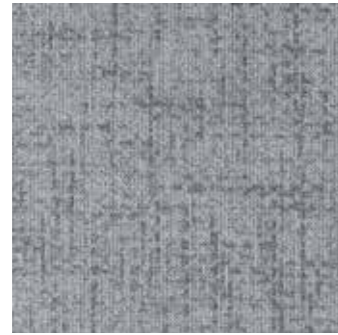
64830 LRV 7,84



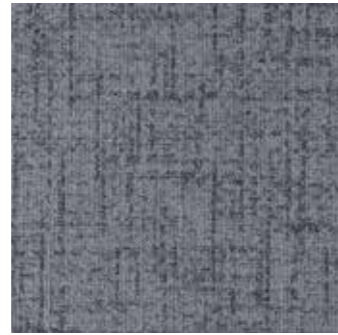
64838 LRV 11,77



64840 LRV 23,88



64841 LRV 17,57



64842 LRV 12,40



64850 LRV 7,57



64860 LRV 11,09



64866 LRV 11,42



64870 LRV 10,50

Technical details

Manufacturing type
tufted 1/10"

Construction
structured loop pile

Pile composition
100% PA 6 - Econyl®

Pile weight
650 g/m² (+/-)

Total weight
4.400 g/m² (+/-)

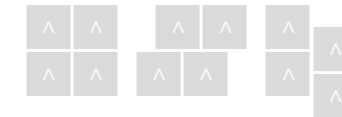
Pile height
4,0 mm (+/-)

Total height
7,0 mm (+/-)

Size
50 x 50 cm

Classification
33 heavy commercial

Fire resistance
Bfl-S1



ECONYL®
ENDLESS POSSIBILITIES

Carpet tile

Wall-to-wall



Artisan Tweed 64860
Groove Tones 62162
Groove Tones 62185



Aztec Weave 6593233

line structure
modern
versatile

Aztec Weave

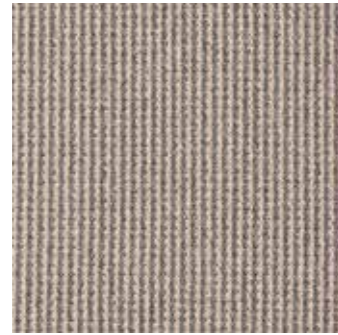
Aztec Weave has **a lined texture** with a versatile weave look. As a result, the collection fits perfectly into any modern office project or commercial space. Choose from 14 neutral colours that will take your project to the next level.



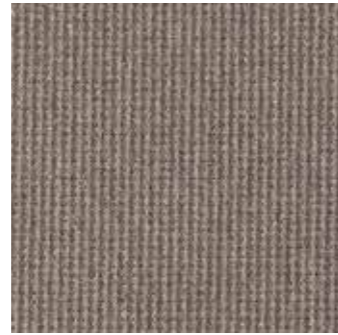
Aztec Weave 6593233



6593120 LRV 16,38



6594520 LRV 15,78



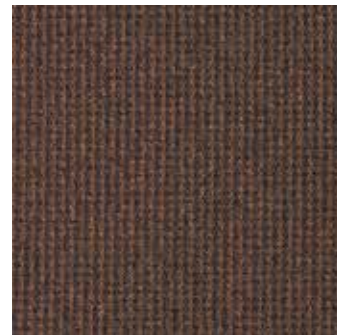
6593044 LRV 9,70



6595031 LRV 8,36



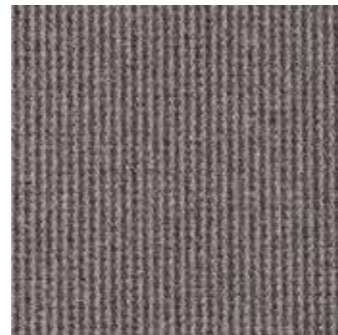
6593309 LRV 8,57



6593233 LRV 5,12



6593230 LRV 5,63



6595044 LRV 8,57



6595145 LRV 6,22



6595150 LRV 4,65



6595551 LRV 3,33



6595560 LRV 3,38



6596261 LRV 7,43



6597073 LRV 7,53

Technical details

Manufacturing type
tufted 1/10"

Construction
structured loop pile

Pile composition
100% PA 6 (nylon)

Pile weight
600 g/m² (+/-)

Total weight
1.885 g/m² (+/-)

Pile height
4,0 mm (+/-)

Total height
7,0 mm (+/-)

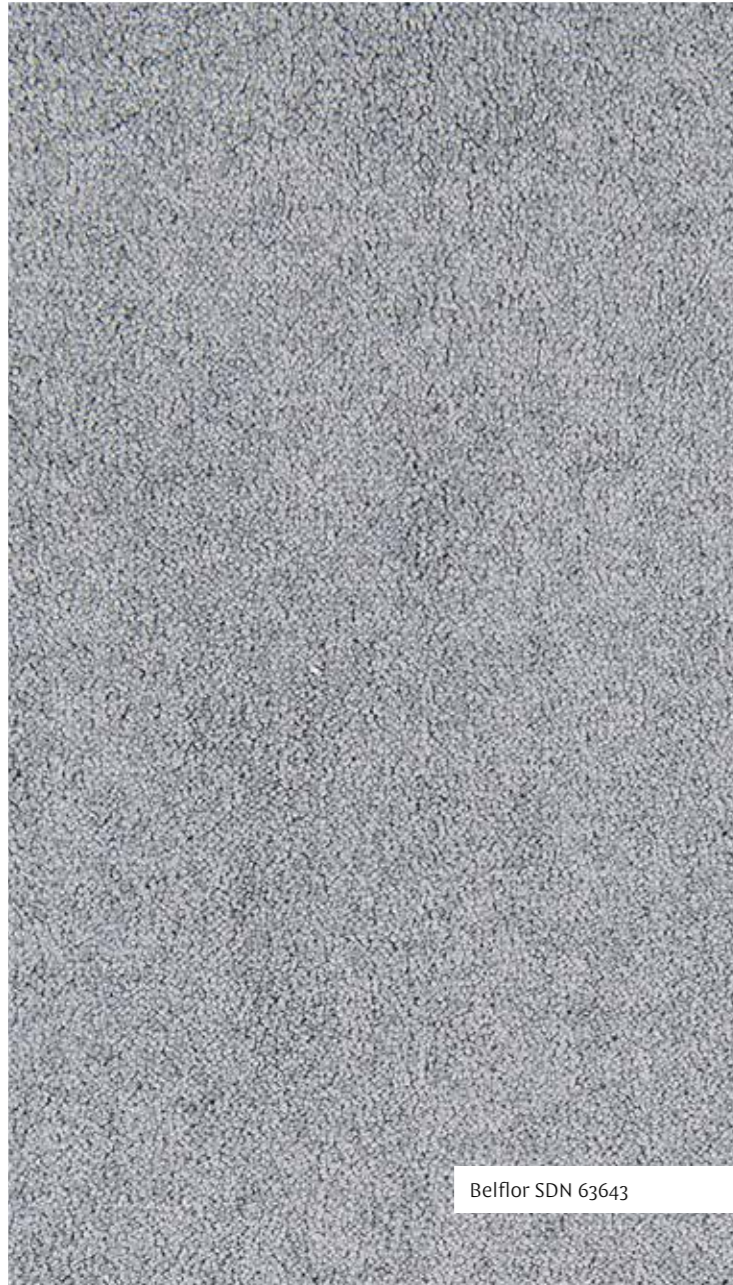
Size
400 cm

Classification
33 commercial general

Fire resistance
Bfl-S1

 Wall-to-wall





Belflor SDN 63643

budget-friendly
residential look
cosy

Belflor SDN

Belflor SDN brings **affordable cosiness** and a homely feel to every home, as well as to public spaces such as shops or at trade fair stands. This new short-pile fris  collection features 6 neutral and highly accessible colours. Thanks to the Solution Dyed Nylon (polyamide) yarn technique, we guarantee a durable (class 32) and easy-care carpet. Its softness and beautiful lustre effect gives it a comfortable feel.



Belflor SDN 63643



63620

LRV 32,33



63630

LRV 26,06



63641

LRV 44,38



63643

LRV 17,54



63645

LRV 7,21



63650

LRV 5,65

Technical details

Manufacturing type
tufted 1/8"

Construction
2-ply cut pile

Pile composition
100% PA 6

Pile weight
810 g/m² (+/-)

Total weight
1.900 g/m² (+/-)

Pile height
5,5 mm (+/-)

Total height
7,0 mm (+/-)

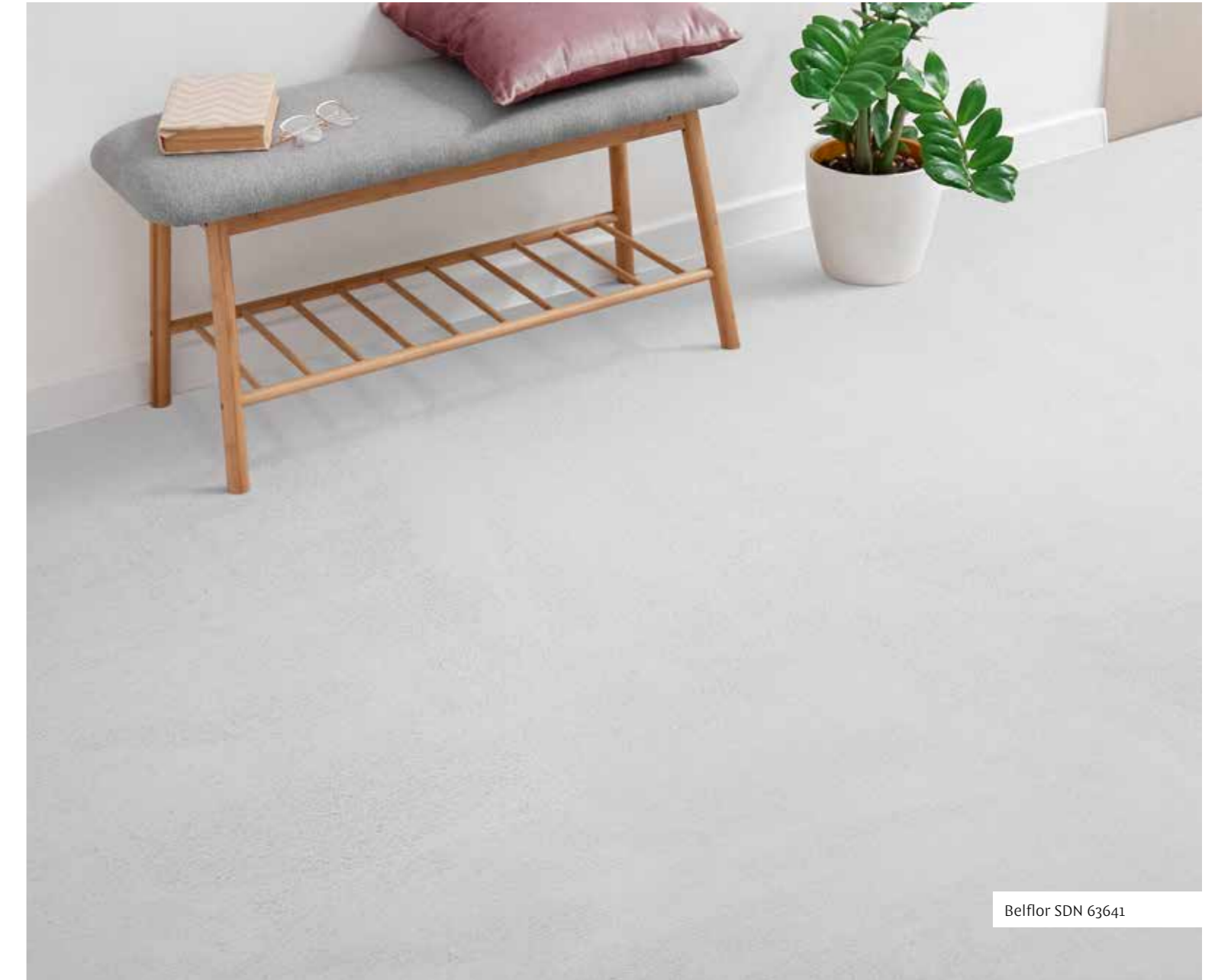
Size
400 cm

Classification
32 general commercial

Fire resistance
Cfl-S1



Wall-to-wall



Belflor SDN 63641



shiny
superb comfort
soft touch

Belflor SDN Luxe

Belflor SDN Luxe is a shiny collection with a residential look and feel. The thick deep pile creates a **luxurious soft touch**. Its frisé texture looks best at home and in hotel rooms. The collection is also ideal for high-end office spaces. Available in six neutral colourways.

Belflor SDN Luxe is designed with high-quality, durable materials that promote user well-being.





65720

LRV 32,33



65730

LRV 26,06



65741

LRV 44,38



65743

LRV 17,54



65745

LRV 7,21



65750

LRV 5,65

Technical details

Manufacturing type
tufted 1/8"

Construction
2-ply cut pile

Pile composition
solution dyed

Pile weight
1.250 g/m² (+/-)

Total weight
4.800 g/m² (+/-)

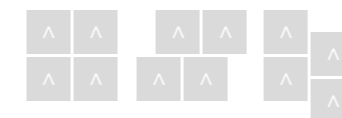
Pile height
9,5 mm (+/-)

Total height
10,5 mm (+/-)

Size
50 x 50 cm

Classification
32 general commercial

Fire resistance
Bfl-S1



 Carpet tile

 Wall-to-wall



Belflor SDN Luxe 65745



Cameo 6397073

residential
solid
wavy

Cameo

Cameo is Aztec Weave's little sister. The collection has a **wavy, irregular texture** which creates a unique look. That look, combined with its sturdiness, makes the carpet an absolute hit in commercial spaces, the hospitality sector, and residential care centres. The collection also shines in residential settings. Choose from 14 different colours, ranging from neutral to brighter tones.



Cameo 6397073



6392031 LRV 18,22



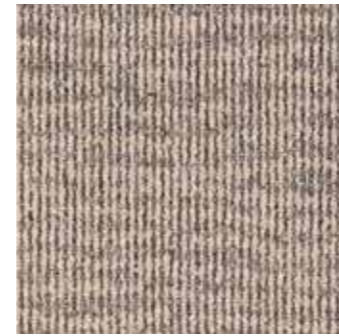
6390933 LRV 10,34



6393309 LRV 7,38



6393233 LRV 4,63



6392045 LRV 18,28



6393120 LRV 14,08



6394520 LRV 11,98



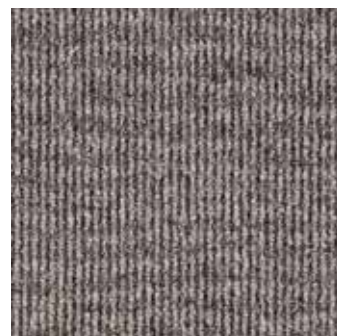
6395155 LRV 3,58



6395150 LRV 4,34



6395145 LRV 5,08



6394450 LRV 10,06



6394551 LRV 7,07



6396162 LRV 8,42



6397370 LRV 8,33

Technical details

Manufacturing type
tufted 1/10"

Construction
structured loop pile

Pile composition
100% PA 6 (nylon)

Pile weight
600 g/m² (+/-)

Total weight
2.000 g/m² (+/-)

Pile height
3,5 mm (+/-)

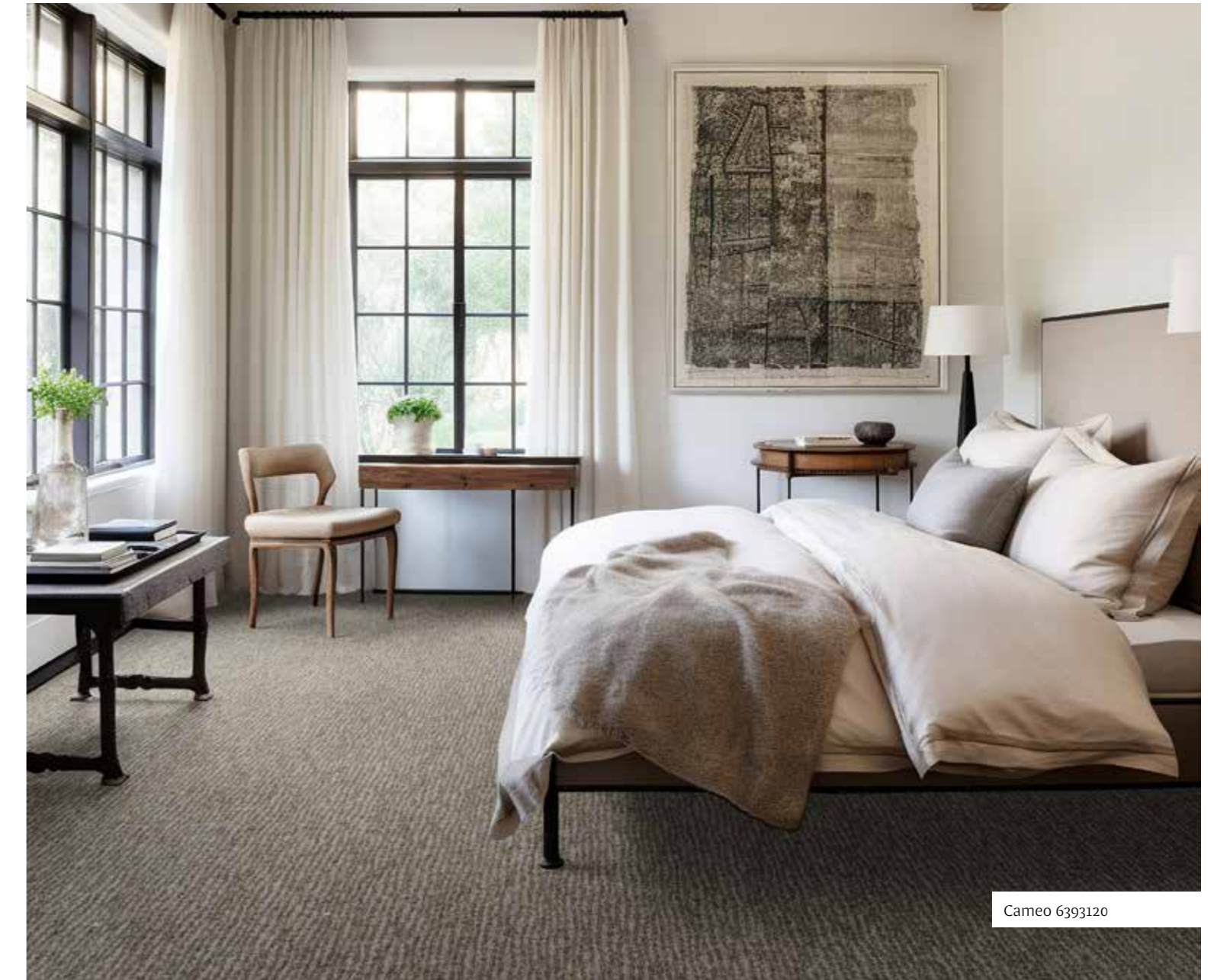
Total height
6,5 mm (+/-)

Size
400 cm

Classification
33 commercial general

Fire resistance
Bfl-S1

 Wall-to-wall



Cameo 6393120



Cobalt Creations 6384290

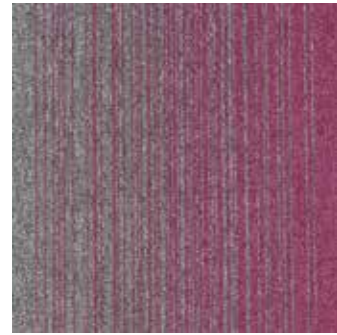
lively
transition
versatile

Cobalt Creations

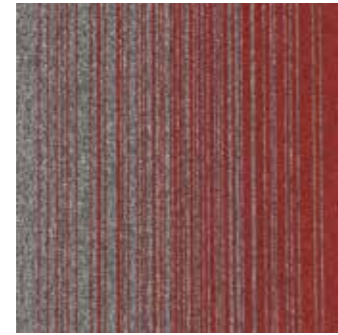
Cobalt Creations is a **modern modular concept of colour transition** that adds character to any interior. The collection combines the uni colours of Cobalt SDN. Create unique floor concepts with the vibrant colour tiles or opt for a modern and sleek with a neutral transition tile. You can choose either option with the numerous laying patterns available. The collection consists of 11 colour options.



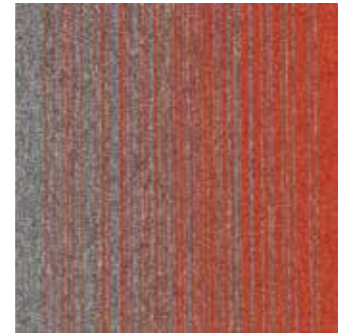
Cobalt Creations 6384241
Cobalt Creations 6384251
Cobalt SDN 64041
Cobalt SDN 64051



6384283 LRV 9,06



6384280 LRV 8,50



6384238 LRV 9,80



6384249 LRV 14,34



6384290 LRV 15,03



6384273 LRV 10,48



6384263 LRV 9,43



6384260 LRV 7,74



6384251 LRV 7,47



6384250 LRV 8,71



6384241 LRV 15,09

Technical details

Manufacturing type
tufted 1/10"

Construction
loop pile

Pile composition
100% PA 6

Pile weight
550 g/m² (+/-)

Total weight
4.300 g/m² (+/-)

Pile height
3,0 mm (+/-)

Total height
6,0 mm (+/-)

Size
50 x 50 cm

Classification
33 heavy commercial

Fire resistance
Bfl-S1



Carpet tile



Cobalt Creations 6384263
Cobalt SDN 64042
Cobalt SDN 64063



budget-friendly
reliable
versatile

Cobalt SDN

Cobalt SDN is our **solid base collection for mixing and matching with other collections**. Cobalt SDN is budget-friendly and offers 28 colours. Choose from warm, neutral shades or go for fresh, trendy colours. Combine the uni colours with our latest Cobalt Design Collections: Grunge, Hexagon Art, Cobalt Creations, Expression or Relined to boost any interior. Order Cobalt SDN from stock, all colours are quickly available.







64096

LRV 3,92



64083

LRV 7,01



64080

LRV 5,73



64038

LRV 8,75



64090

LRV 20,09



64049

LRV 18,59



64070

LRV 5,51



64073

LRV 10,44



64060

LRV 4,05



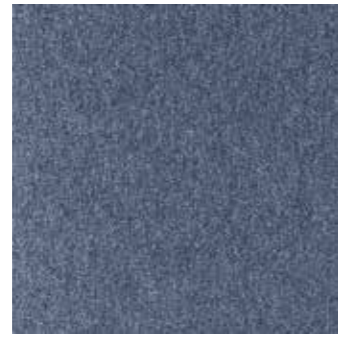
64065

LRV 4,56



64063

LRV 7,55



64062

LRV 5,76



64061

LRV 9,85



64066

LRV 15,13

Technical details

Manufacturing type
tufted 1/10"

Construction
loop pile

Pile composition
100% PA 6

Pile weight
550 g/m² (+/-)

Total weight
4.300 g/m² (+/-)

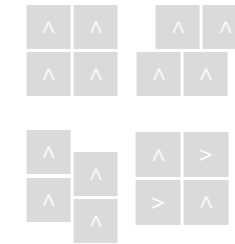
Pile height
3,0 mm (+/-)

Total height
6,0 mm (+/-)

Size
50 x 50 cm

Classification
33 heavy commercial

Fire resistance
Bfl-S1

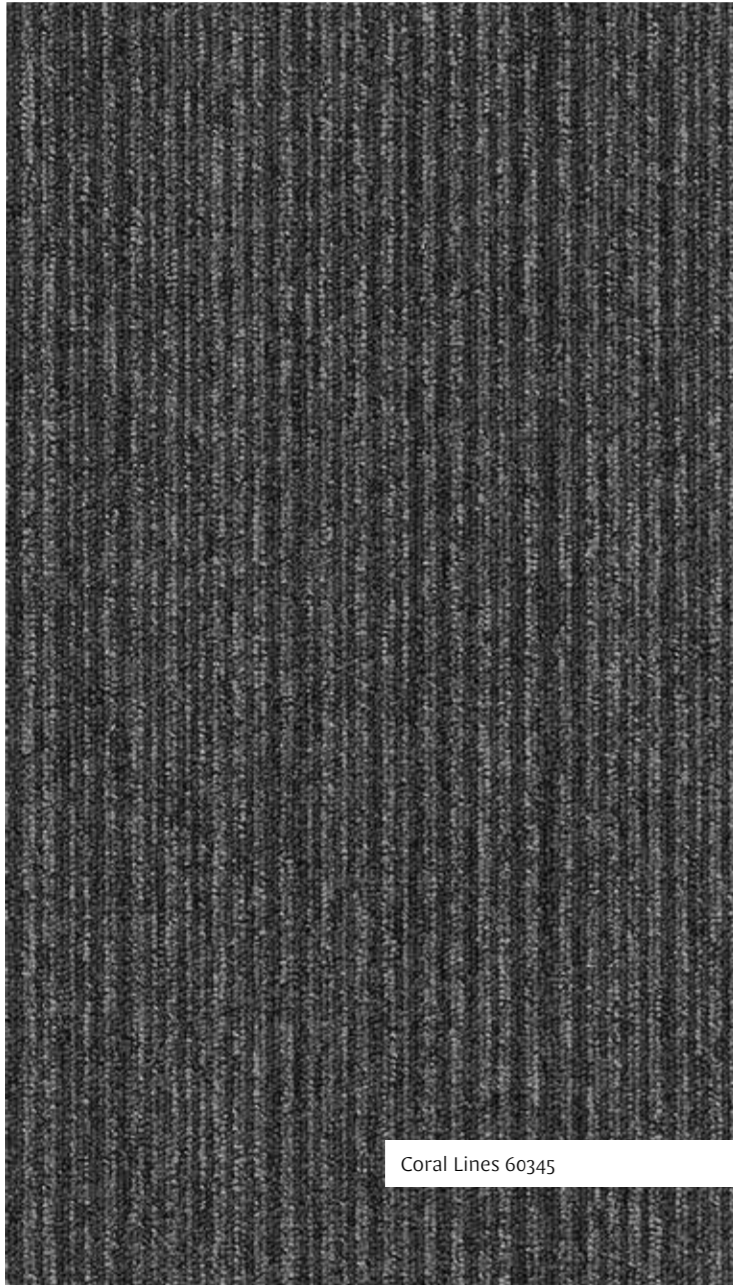


 Carpet tile

 Wall-to-wall



Cobalt SDN 64061
Cobalt SDN 64062
Cobalt SDN 64065
Cobalt SDN 64066
Cobalt SDN 64090



Coral Lines 60345

economical
functional
wear-resistant

Coral (Lines)

Coral (Lines) has been developed to be **functional, economical and wear-resistant**. These properties make it extremely suitable for heavy commercial use and intensive project use. Coral is available in seven classic colours. Mix and match Coral or Coral Lines, six matching colours with a stripe design for an original look.



Coral Lines 60340
Coral Lines 60345



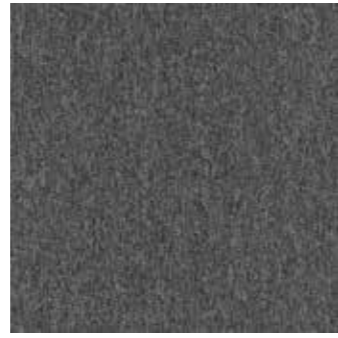
58351

LRV 3,85



58350

LRV 5,41



58342

LRV 9,99



58376

LRV 11,23



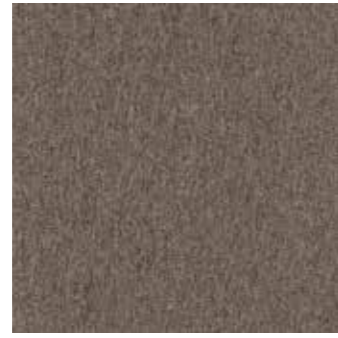
58360

LRV 6,19



60309

LRV 11,16



58309

LRV 12,39



58380

LRV 5,01



60380

LRV 7,28



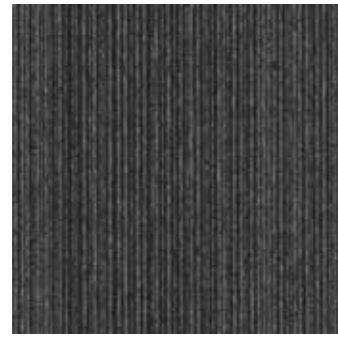
60360

LRV 8,07



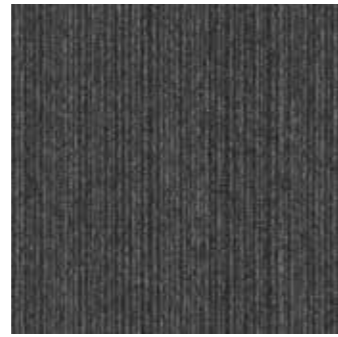
60376

LRV 10,58



60340

LRV 6,76



60345

LRV 7,58

Technical details

Manufacturing type
tufted 1/10"

Construction
loop pile

Pile composition
100% PA 6 BCF

Pile weight
485 g/m² (+/-)

Total weight
4.200 g/m² (+/-)

Pile height
3,0 mm (+/-)

Total height
5,5 mm (+/-)

Size
50 x 50 cm

Classification
33 heavy commercial

Fire resistance
Bfl-S1



Carpet tile

Wall-to-wall



Coral Lines 60376
Coral Lines 60351



Scandinavian
ultratuft
wear-resistant

Country SDN

Country SDN is without doubt **a unique collection thanks to the ultratuft technology.** This special production method results in an extremely durable and wear-resistant carpet. Country SDN is the ideal choice for demanding and frequently used areas such as entrance halls, corridors and offices. The typical flat weave look and appearance of Country SDN can often be found in Scandinavian countries. The collection is available in nine minimalist solid colours.





65230 LRV 7,50



65231 LRV 11,59



65240 LRV 16,65



65241 LRV 19,33



65242 LRV 11,13



65244 LRV 13,20



65250 LRV 5,76



65251 LRV 4,05



65255 LRV 2,95

Technical details

Manufacturing type
ultratuft 1/10²

Construction
loop pile

Pile composition
100% PA 6

Pile weight
550 g/m² (+/-)

Total weight
4.100 g/m² (+/-)

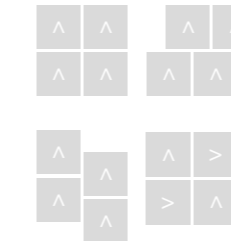
Pile height
1,0 mm (+/-)

Total height
5,5 mm (+/-)

Size
50 x 50 cm

Classification
33 heavy commercial

Fire resistance
Bfl-S1



 Carpet tile



Country SDN 65230
Country SDN 65241
Country SDN 65244



Crossline 6623120

bold
colourful
unique

Crossline

Crossline is the latest addition to the Cobalt Design Collections. **The unique criss-cross line pattern creates a bold and playful effect.** Moreover, the line design beautifully lends itself to tiling. It can be laid randomly without zippers thanks to the length and lines. The bold pattern is particularly well-suited to hospitality and office environments. Choose from 17 colour options ranging from out-of-the-box ochre yellow to classic anthracite.



Crossline 6623120



6624110 LRV 22,95



6624441 LRV 16,01



6624241 LRV 14,25



6624240 LRV 13,12



6625044 LRV 8,42



6625145 LRV 6,00



6625550 LRV 4,00



6625551 LRV 3,22



6626062 LRV 4,43



6626563 LRV 5,54



6627073 LRV 7,02



6625049 LRV 11,23



6623120 LRV 7,50



6624544 LRV 10,30



6625130 LRV 5,21



6623233 LRV 5,10



6625038 LRV 6,49



Technical details

Manufacturing type
tufted 1/10"

Construction
structured loop pile

Pile composition
100% PA 6

Pile weight
650 g/m² (+/-)

Total weight
4.300 g/m² (+/-)

Pile height
4,0 mm (+/-)

Total height
7,0 mm (+/-)

Size
50 x 50 cm

Classification
33 heavy commercial

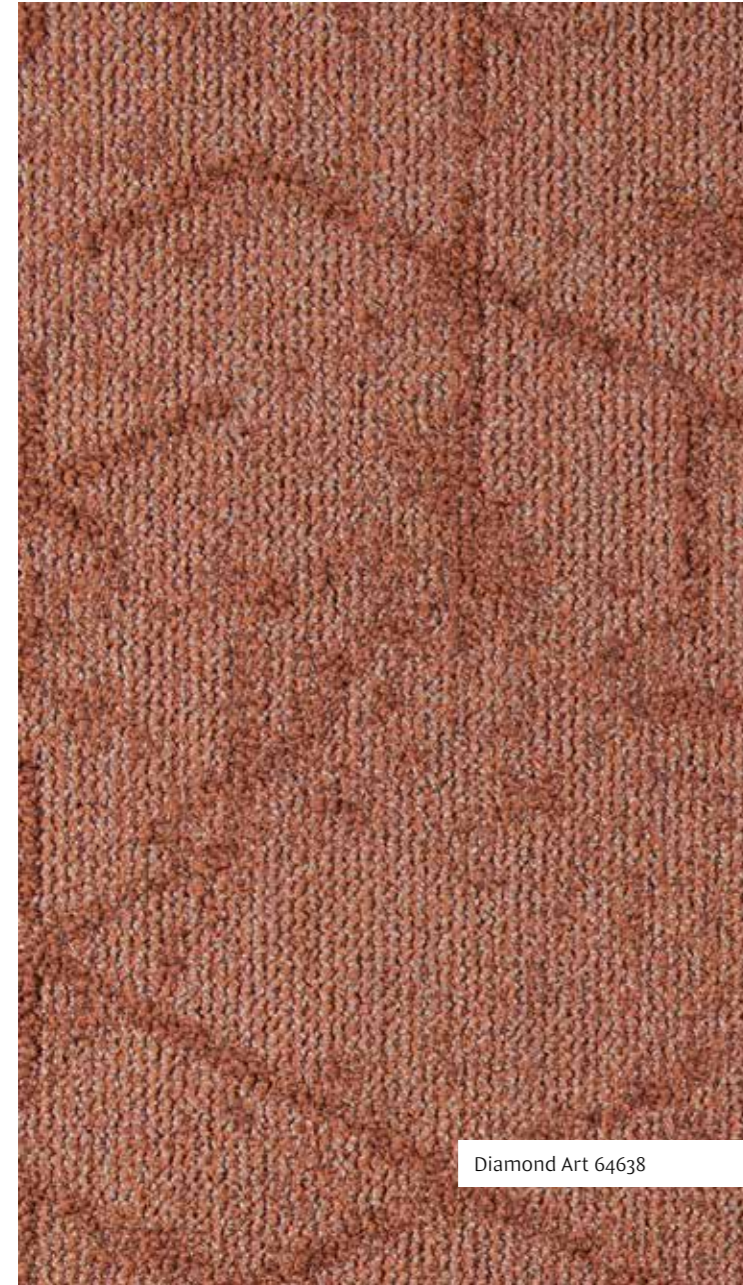
Fire resistance
Bfl-S1

Pattern repeat
206 x 172 cm



Carpet tile

Wall-to-wall



Diamond Art 64638

concrete look
diamond pattern
versatile

Diamond Art

Diamond Art has a **check pattern with a concrete look** that draws your gaze to the floor. There is also a diamond pattern in it. This stylish pattern fits any interior, from the contract market to the hospitality sector. The regenerable ECONYL® yarn also makes it an ecological choice. Diamond Art is available in 12 different neutral colours. Combine the bold print of Diamond Art with Groove Tones to create an original look.



Diamond Art 64621
Diamond Art 64638





64620 LRV 24,42



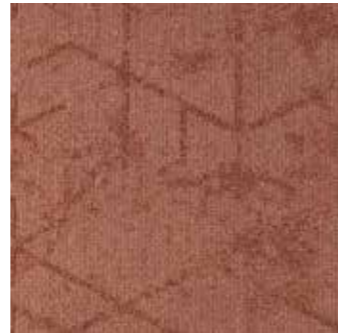
64621 LRV 21,86



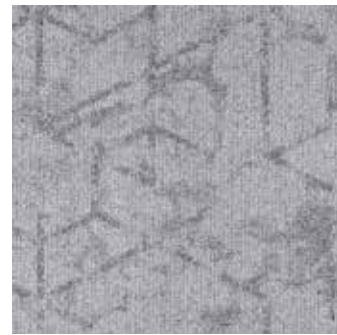
64622 LRV 13,66



64630 LRV 7,84



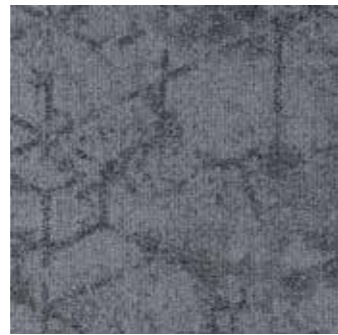
64638 LRV 11,77



64640 LRV 23,88



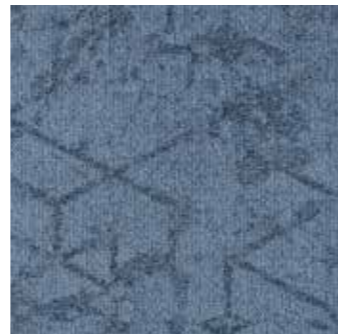
64641 LRV 17,57



64642 LRV 12,40



64650 LRV 7,57



64660 LRV 11,09



64666 LRV 11,42



64670 LRV 10,50

Technical details

Manufacturing type
tufted 1/10"

Construction
structured loop pile

Pile composition
100% PA 6 - Econyl®

Pile weight
650 g/m² (+/-)

Total weight
4.400 g/m² (+/-)

Pile height
4,0 mm (+/-)

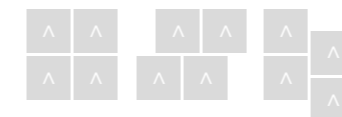
Total height
7,0 mm (+/-)

Size
50 x 50 cm

Classification
33 heavy commercial

Fire resistance
Bfl-S1

Pattern repeat
203 x 167 cm



ECONYL®
ENDLESS POSSIBILITIES

 Carpet tile

 Wall-to-wall



Diamond Art 64622



performance
robust
texture

Diplomat

When it comes to look and feel, Diplomat resembles President E. What are the biggest differences? Diplomat is more **budget-friendly and made with nylon SDN yarns** instead of ECONYL®. The collection combines sturdiness with quality, while the structure and stylish design bring elegance to any room. It is the standard for floor coverings in both commercial and residential environments. The cut pile with frieze creates a nice finish and an interesting look. This robust carpet is also quite durable, so there's no compromise on performance.





66110 LRV 26,11



66120 LRV 14,19



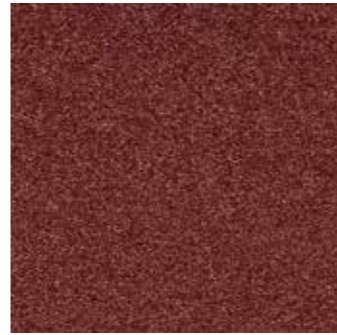
66121 LRV 18,57



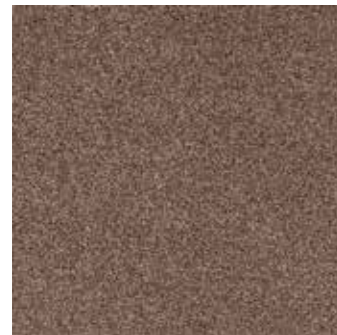
66122 LRV 12,10



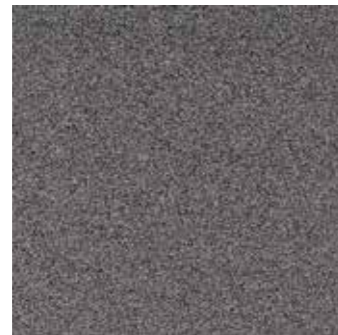
66124 LRV 7,82



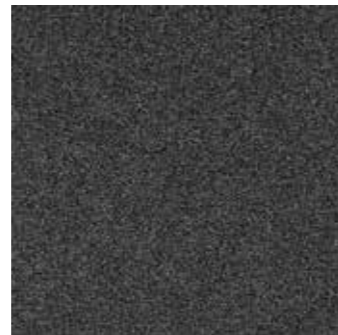
66183 LRV 7,09



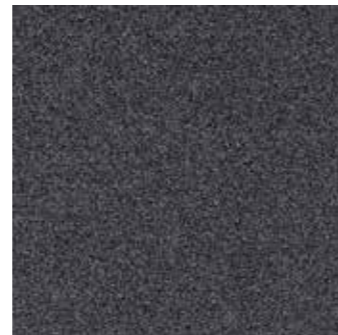
66125 LRV 11,98



66142 LRV 12,30



66144 LRV 6,99



66145 LRV 7,04



66146 LRV 5,24



66150 LRV 3,01



66151 LRV 4,33



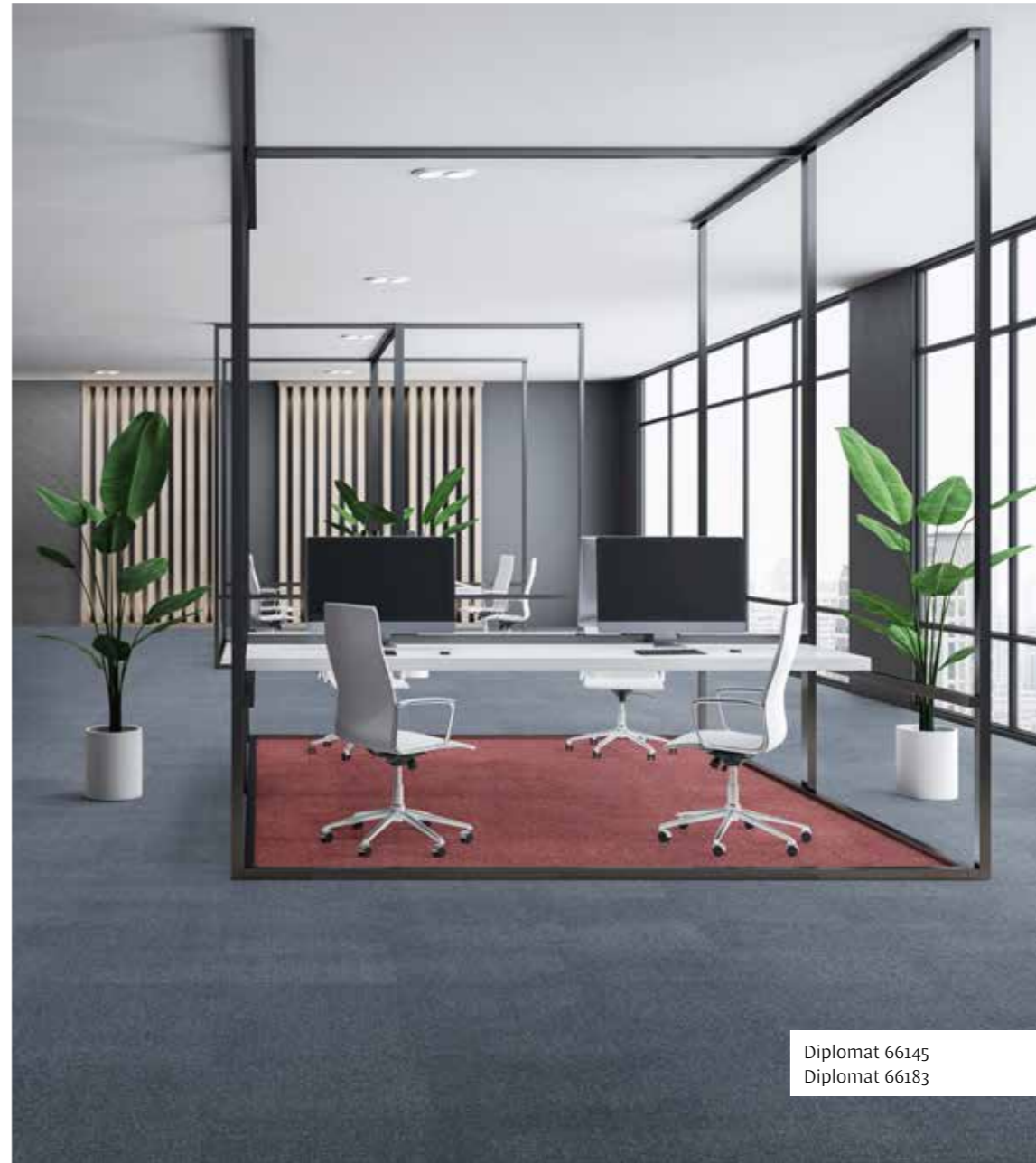
66161 LRV 9,78



66162 LRV 4,66



66170 LRV 5,77



Diplomat 66145
Diplomat 66183

Technical details

Manufacturing type
tufted 1/8"

Construction
3-ply cut pile

Pile composition
100% PA 6 - heatset

Pile weight
1.150 g/m² (+/-)

Total weight
4.600 g/m² (+/-)

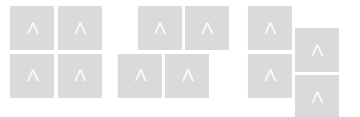
Pile height
5,5 mm (+/-)

Total height
8,0 mm (+/-)

Size
50 x 50 cm

Classification
33 heavy commercial

Fire resistance
Bfl-S1



Carpet tile

Wall-to-wall



Earth 61125

expressive
innovative
natural

Earth

Earth is inspired by nature and has **dynamic patterns and organic colours**. Nature is key in this collection because Earth is sustainable, thanks to the 100% regenerable ECONYL® yarn. This unique floor concept lets interior designers indulge themselves. Earth is suitable for any high-end commercial environment. The 11 rich colours bring warmth to any interior.



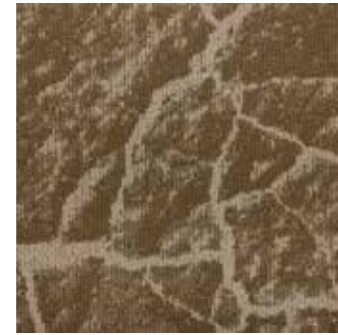
Earth 61125



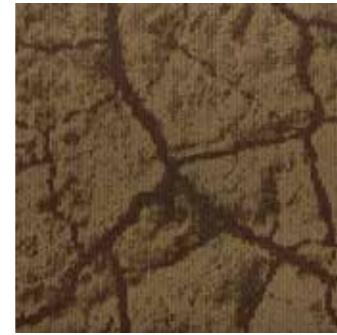
61110 LRV 24,21



61111 LRV 21,18



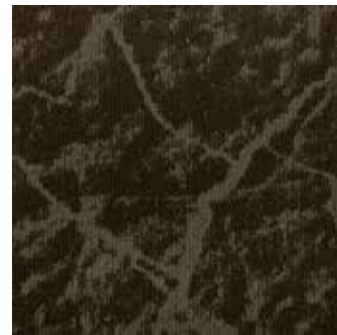
61120 LRV 18,54



61123 LRV 8,55



61125 LRV 5,98



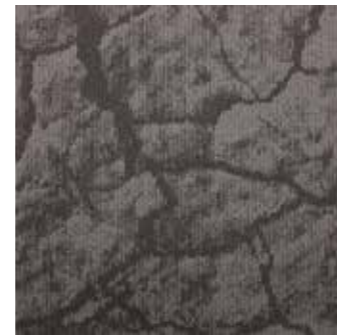
61132 LRV 8,88



61134 LRV 5,30



61140 LRV 12,74



61141 LRV 13,43



61142 LRV 7,09



61150 LRV 6,12

Technical details

Manufacturing type
tufted 1/10"

Construction
structured loop pile

Pile composition
100% PA 6 - Econyl®

Pile weight
800 g/m² (+/-)

Total weight
4.550 g/m² (+/-)

Pile height
5,0 mm (+/-)

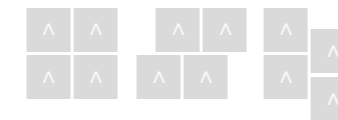
Total height
8,0 mm (+/-)

Size
50 x 50 cm

Classification
33 heavy commercial

Fire resistance
Bfl-S1

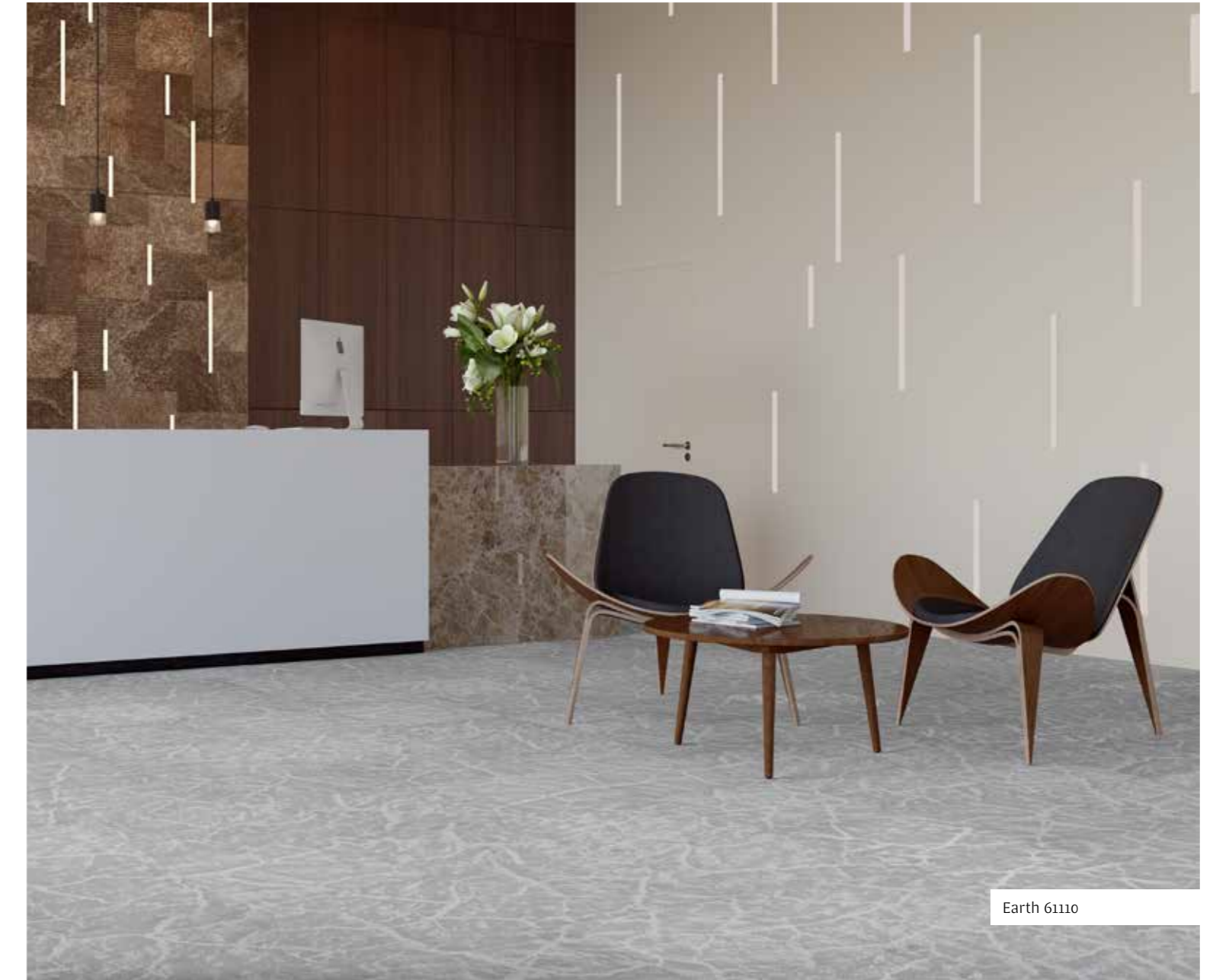
Pattern repeat
405 x 250 cm



ECONYL®
ENDLESS POSSIBILITIES

 Carpet tile

 Wall-to-wall





expressive
organic
texture

Expression

Expression's **ship wood or paintbrush pattern catches the eye** and won't leave your attention. Expression belongs to the Cobalt Design Collections. The pattern creates a natural and dynamic look in any interior.

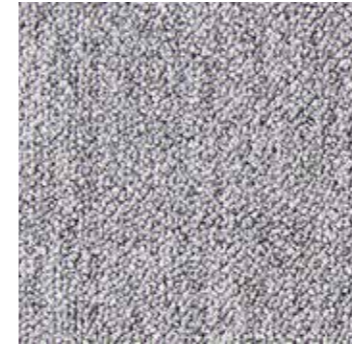
Available in 16 colours, this Solution Dyed product can be effortlessly combined with both the 28 solid colours of Cobalt SDN and the complementary patterns from Grunge, Hexagon Art and Relined. Expression is designed with high-quality, durable materials that promote user well-being.



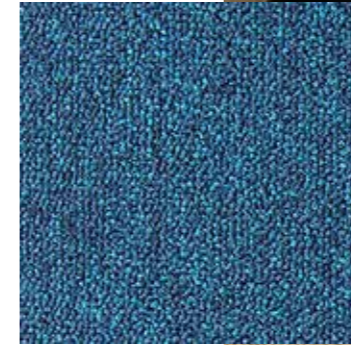


Cobalt SDN 64065
 Expression 6416540
 Cobalt SDN 64040

Mixed organics



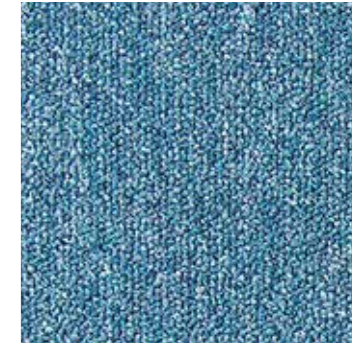
Cobalt SDN 64040



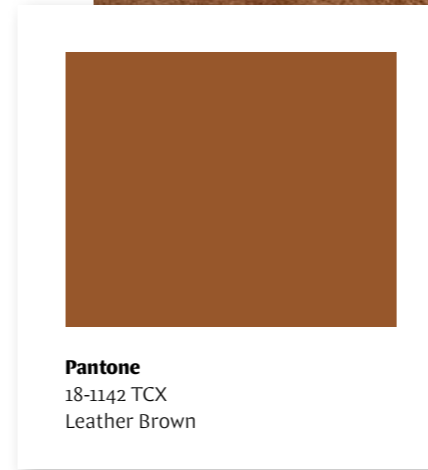
Cobalt SDN 64065



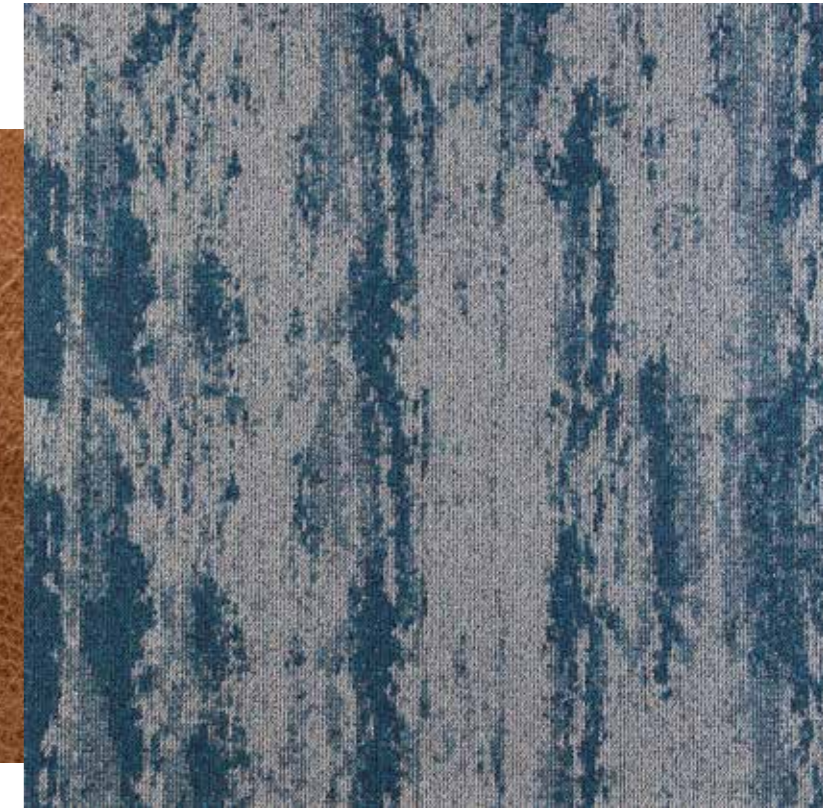
Cobalt SDN 64033



Cobalt SDN 64063



Pantone
 18-1142 TCX
 Leather Brown



Expression 6416540



6414110 LRV 24,15



6414441 LRV 16,07



6414241 LRV 13,92



6414240 LRV 14,20



6414544 LRV 10,61



6419640 LRV 8,85



6413120 LRV 14,98



6415044 LRV 9,59



6413233 LRV 5,19



6415130 LRV 5,38



6415145 LRV 6,53



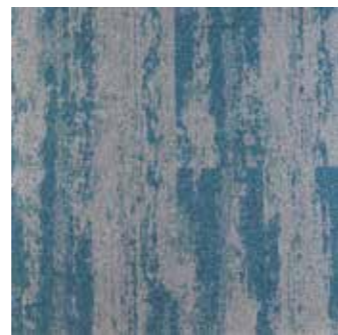
6415550 LRV 4,13



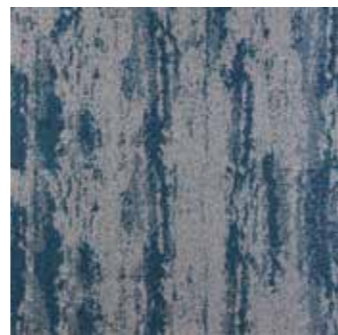
6416140 LRV 13,30



6416240 LRV 10,65



6416340 LRV 11,17



6416540 LRV 10,21



Expression 6415145
Expression 6414240
Cobalt SDN 64042

Technical details

Manufacturing type
tufted 1/10"

Construction
structured loop pile

Pile composition
100% PA 6

Pile weight
650 g/m² (+/-)

Total weight
4.300 g/m² (+/-)

Pile height
4,0 mm (+/-)

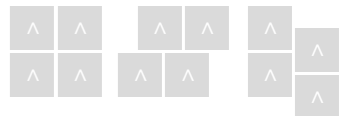
Total height
7,0 mm (+/-)

Size
50 x 50 cm

Classification
33 heavy commercial

Fire resistance
Bfl-S1

Pattern repeat
249 x 278 cm



Carpet tile

Wall-to-wall

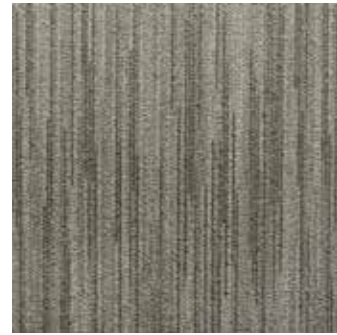


durable
 elegant
 timeless

Groove

The light-striped design of Groove looks elegant in any room. The durable, 100% regenerable ECONYL® yarn means it is also an environmentally friendly collection. The stylish carpet can be used in any setting. Combine Groove's seven striped colours with the seven matching solid colours from the Groove Tones collection and get an original design concept.





62122

LRV 12,65



62140

LRV 15,24



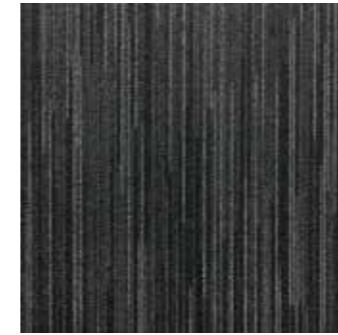
62142

LRV 7,50



62150

LRV 5,34



62162

LRV 5,34



62165

LRV 6,06



62185

LRV 6,27

Technical details

Manufacturing type
tufted 1/10"

Construction
loop pile

Pile composition
100% PA 6 - Econyl®

Pile weight
580 g/m² (+/-)

Total weight
4.400 g/m² (+/-)

Pile height
3,5 mm (+/-)

Total height
6,5 mm (+/-)

Size
50 x 50 cm

Classification
33 heavy commercial

Fire resistance
Bfl-S1



 Carpet tile

 Wall-to-wall



Groove Tones 62350
Groove 62140



Groove Brick 62262

dynamic
industrial
minimalist

Groove Brick

Groove Brick combines a **subtle industrial design with the highest technical finish.** The collection is made on our Myriad tufting machine using 100% regenerable ECONYL® yarn. Do you think you will go with Groove Brick? If you do, you are choosing elegance, class and a minimalistic floor design. The collection is available in 9 modern colours. Can it be a little extra? Combine Groove Brick with the 7 solid colours out of the Groove Tones collection.



Groove Brick 62262
Groove Tones 62342



62222

LRV 13,1



62240

LRV 16,4



62242

LRV 8,1



62250

LRV 4,7



62262

LRV 5,0



62265

LRV 6,1



62285

LRV 5,8

Technical details

Manufacturing type
tufted 1/10"

Construction
structured loop pile

Pile composition
100% PA 6 - Econyl®

Pile weight
620 g/m² (+/-)

Total weight
4.450 g/m² (+/-)

Pile height
4,0 mm (+/-)

Total height
7,0 mm (+/-)

Size
50 x 50 cm

Classification
33 heavy commercial

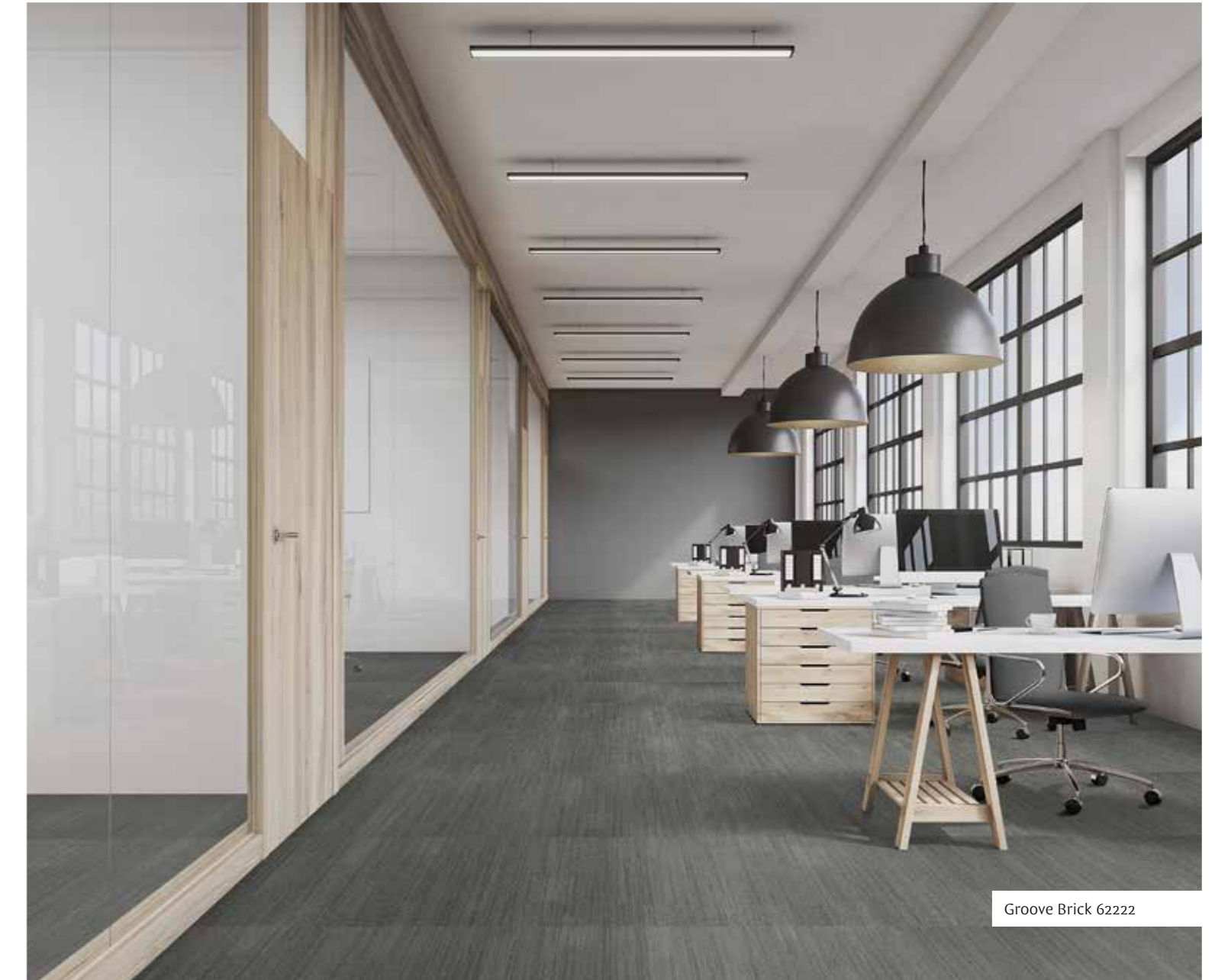
Fire resistance
Bfl-S1



ECONYL®
ENDLESS POSSIBILITIES

 Carpet tile

 Wall-to-wall



Groove Brick 62222



Groove Tones 62350

elegant
mix & match
durable

Groove Tones

Groove Tones is the big brother of Groove. The collection consists of seven matching solid colours. It is ideal for mixing and matching with Groove's striped design. The solid colours are elegant and classic. The regenerable ECONYL® yarn also makes it an ecological choice. The carpet is stylish and elegant, which means you can put it in any commercial setting.



Groove Tones 62350
Groove 62140



62385

LRV 5,47



62365

LRV 5,87



62362

LRV 4,54



62350

LRV 4,24



62342

LRV 8,80



62340

LRV 18,34



62322

LRV 13,98

Technical details

Manufacturing type
tufted 1/10"

Construction
loop pile

Pile composition
100% PA 6 - Econyl®

Pile weight
580 g/m² (+/-)

Total weight
4.400 g/m² (+/-)

Pile height
3,5 mm (+/-)

Total height
6,5 mm (+/-)

Size
50 x 50 cm

Classification
33 heavy commercial

Fire resistance
Bfl-S1



ECONYL®
ENDLESS POSSIBILITIES

 Carpet tile

 Wall-to-wall



Groove Tones 62362
Groove Brick 62265



Grunge 6423233

concrete look
industrial
modern

Grunge

Grunge is a **bold, industrial and tough design**. The concrete pattern gives a unique look to any interior. Mix and match Grunge with Cobalt SDN's uni colours to design a distinctive flooring concept. The collection is available in 15 different colours that contrast with the rug's industrial look.



Grunge 6423233
Cobalt SDN 64033



6424110 LRV 23,66



6424441 LRV 15,42



6424240 LRV 12,98



6424241 LRV 13,44



6424544 LRV 9,94



6425044 LRV 8,09



6425145 LRV 5,77



6425550 LRV 3,75



6425130 LRV 5,15



6423233 LRV 4,75



6423120 LRV 14,28



6426140 LRV 11,33



6426240 LRV 8,83



6426563 LRV 5,11



6427073 LRV 6,87

Technical details

Manufacturing type
tufted 1/10"

Construction
structured loop pile

Pile composition
100% PA 6

Pile weight
650 g/m² (+/-)

Total weight
4.300 g/m² (+/-)

Pile height
4,0 mm (+/-)

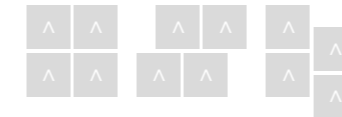
Total height
7,0 mm (+/-)

Size
50 x 50 cm

Classification
33 heavy commercial

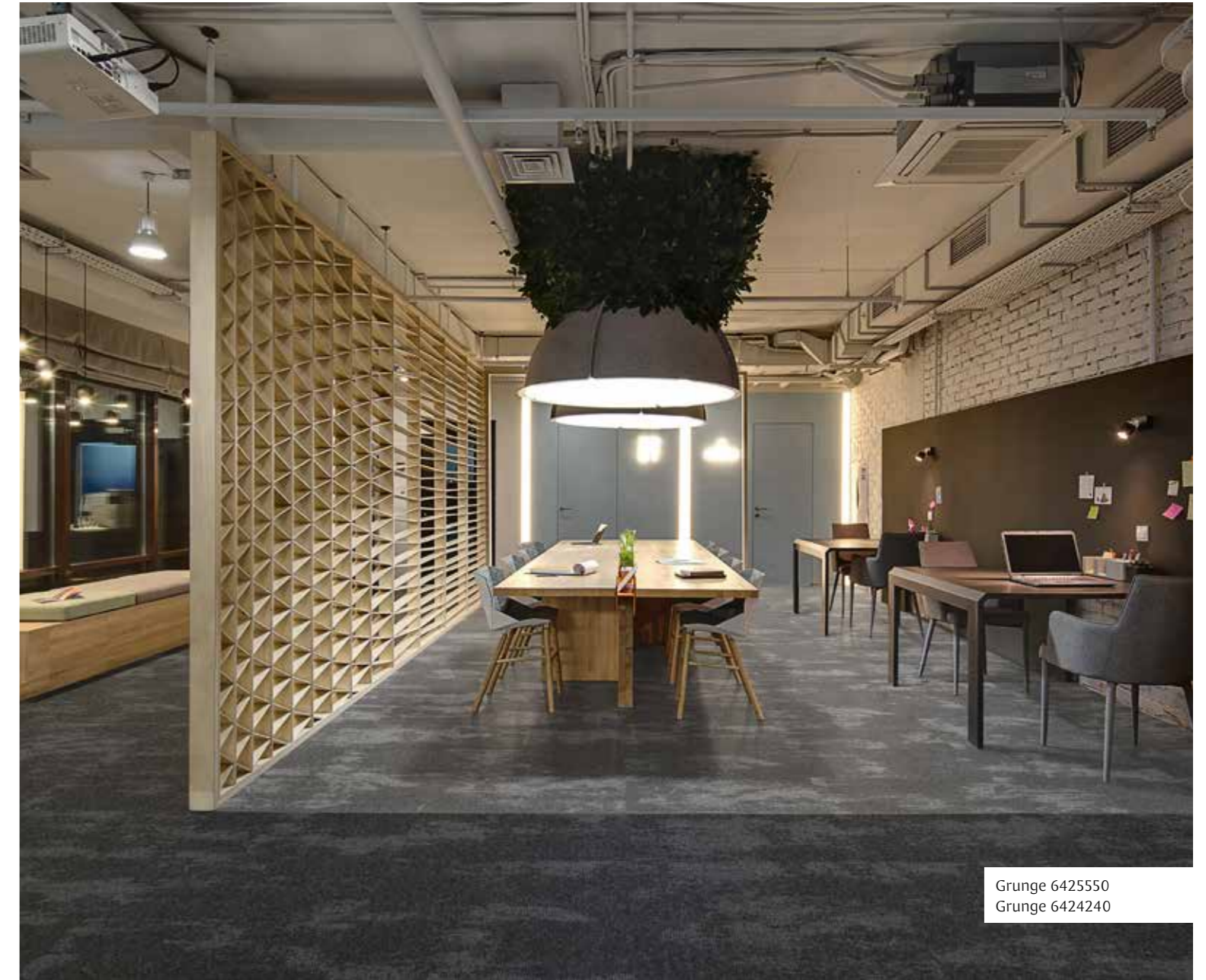
Fire resistance
Bfl-S1

Pattern repeat
203 x 111 cm



 Carpet tile

 Wall-to-wall



Grunge 6425550
Grunge 6424240



Hexagon Art 6434441

honeycomb
mix & match
versatile

Hexagon Art

Hexagon Art has **an original design that draws your gaze to the floor**. The stylish honeycomb pattern fits perfectly in hospitality and office environments. Hexagon Art is available in 16 different colours, ranging from organic to bright shades. Can it be a bit more exciting? Combine the bold print with the matching uni colours from the Cobalt SDN collection. That way, you create a unique flooring concept.



Hexagon Art 6434441

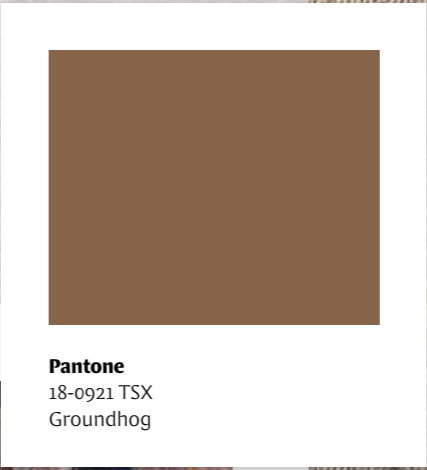


Hexagon Art 6433120
Cobalt SDN 64020

Cozy geometrics



Cobalt SDN 64031



Pantone
18-0921 TSX
Groundhog



Cobalt SDN 64020



Hexagon Art 6433120



6434110 LRV 24,64



6434441 LRV 16,24



6434240 LRV 14,27



6434241 LRV 15,07



6435044 LRV 10,04



6433120 LRV 17,21



6433233 LRV 5,20



6435130 LRV 5,81



6435145 LRV 6,41



6435550 LRV 4,42



6436140 LRV 13,70



6436240 LRV 10,88



6436340 LRV 12,23

Technical details

Manufacturing type
tufted 1/10"

Construction
structured loop pile

Pile composition
100% PA 6

Pile weight
650 g/m² (+/-)

Total weight
4.300 g/m² (+/-)

Pile height
4,0 mm (+/-)

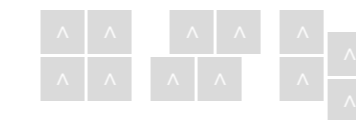
Total height
7,0 mm (+/-)

Size
50 x 50 cm

Classification
33 heavy commercial

Fire resistance
Bfl-S1

Pattern repeat
203 x 167 cm

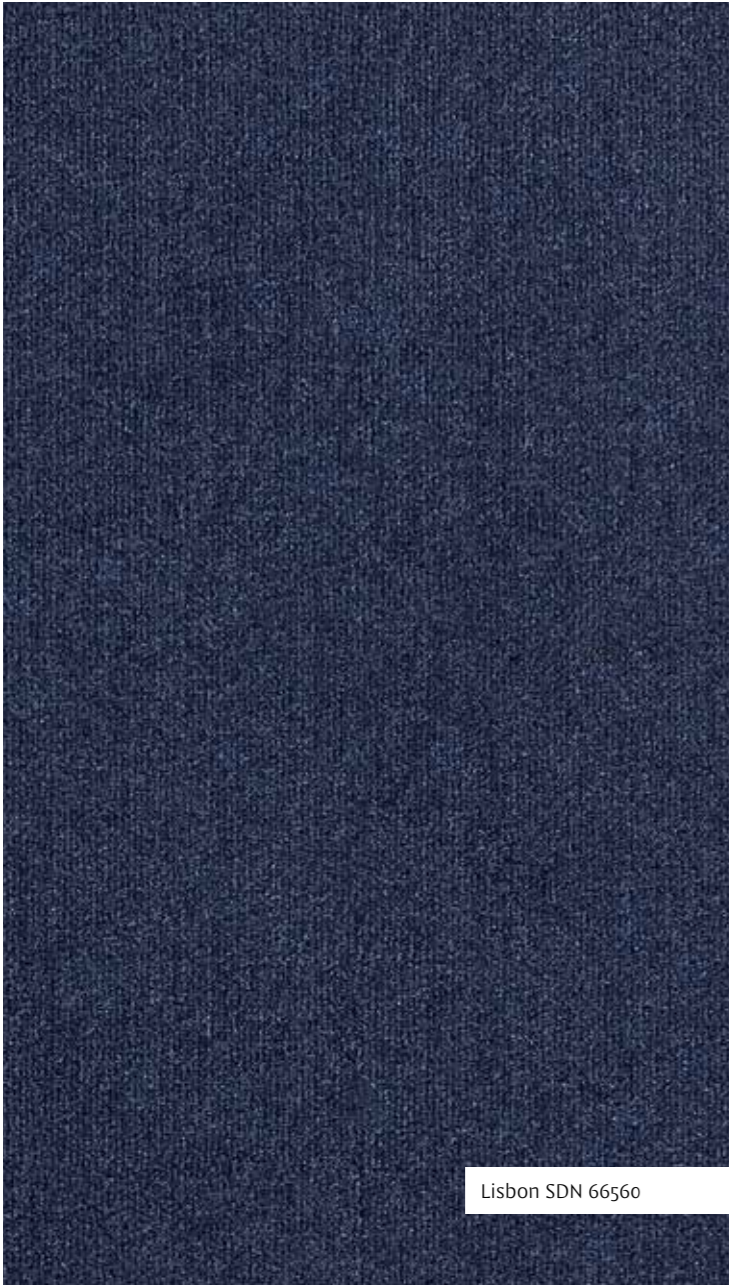


 Carpet tile

 Wall-to-wall



Hexagon Art 6436240
Hexagon Art 6434241



Lisbon SDN 66560

classic
hard-wearing
reliable

Lisbon SDN

Lisbon SDN **combines sturdiness with a classic look** thanks to its velour texture. The carpet is popular in the hospitality sector, public spaces and offices. The short pile design makes the collection extremely durable. Lisbon SDN can take a beating. Choose from 16 different colours, ranging from neutral to brighter tones.



Lisbon SDN 66560
Lisbon SDN 66562



66541 LRV 15,07



66545 LRV 6,57



66542 LRV 8,49



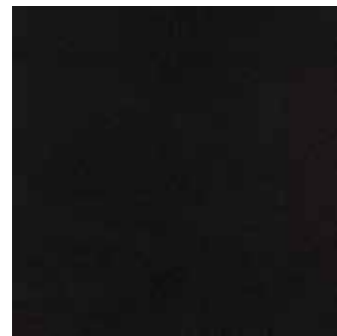
66550 LRV 4,53



66551 LRV 4,23



66562 LRV 4,07



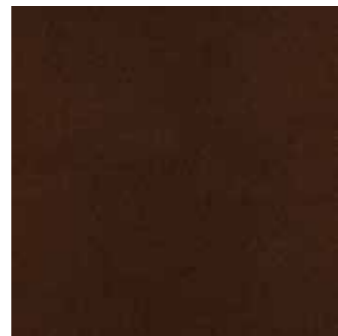
66555 LRV 2,36



66531 LRV 8,59



66530 LRV 6,12



66533 LRV 4,59



66580 LRV 4,15



66538 LRV 6,56



66549 LRV 15,38



66573 LRV 7,37



66570 LRV 3,54



66560 LRV 2,97



Lisbon SDN 66562
Lisbon SDN 66549

Technical details

Manufacturing type
tufted 1/10"

Construction
cut pile

Pile composition
100% PA 6 SDN

Pile weight
700 g/m² (+/-)

Total weight
4.300 g/m² (+/-)

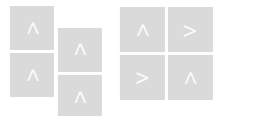
Pile height
4,5 mm (+/-)

Total height
7,0 mm (+/-)

Size
50 x 50 cm

Classification
33 heavy commercial

Fire resistance
Bfl-S1



Carpet tile

Wall-to-wall



Matora 65424

durable
high-quality residential
softness

Matora

Matora has a **playful texture** that makes the carpet suitable for high-end residential projects. It also comes into its own in the hospitality sector. Matora is the little sister of Almyra, Soneva and Medina. We use the same core yarn in production. The colours Bora Bora, Wyoming and Whale Bay also feature in this collection. Like the New Worlds collections, Matora (Primo) is an ecological choice; the carpet is made of 100% regenerated ECONYL® yarn. First-class softness and sustainability in one.



Matora 65424



65411 - Bora Bora LRV 42,82



65420 - Walvis Bay LRV 35,82



65424 - Wyoming LRV 26,03



65426 - Earth Stone LRV 24,40



65430 - Creamy Mushroom LRV 14,61



65431 - Olive Grove LRV 8,75



65432 - Vintage Leather LRV 8,47



65443 - Sea Pearl LRV 32,91



65444 - Winter Sky LRV 16,52



65445 - Elephant Skin LRV 7,30



65455 - Black Panther LRV 2,76

Technical details

Manufacturing type
tufted 1/8"

Construction
3-ply cut pile (saxony)

Pile composition
100% PA 6 - Econyl®

Pile weight
1.600 g/m² (+/-)

Total weight
2.400 g/m² (+/-)

Pile height
8,0 mm (+/-)

Total height
10,0 mm (+/-)

Size
400 cm

Classification
33 heavy commercial

Fire resistance
Cfl-S1

ECONYL®
ENDLESS POSSIBILITIES

 Wall-to-wall



Matera 65426



Madera Primo 65543

durable
high-quality residential
luxurious

Madera Primo

Madera Primo has **a lush texture** that makes the carpet suitable for high-end residential projects. It also comes into its own in the hospitality sector. Its higher pile and density gives it a more luxurious appearance. You can count on the best performance thanks to the resilient three-thread solution dyed yarn. Choose from 11 timeless colours.



Madera Primo 65543



65511 - Bora Bora LRV 42,82



65520 - Walvis Bay LRV 35,82



65524 - Wyoming LRV 26,03



65526 - Earth Stone LRV 24,40



65530 - Creamy Mushroom LRV 14,61



65531 - Olive Grove LRV 8,75



65532 - Vintage Leather LRV 8,47



65543 - Sea Pearl LRV 32,91



65544 - Winter Sky LRV 16,52



65545 - Elephant Skin LRV 7,30



65555 - Black Panther LRV 2,76

Technical details

Manufacturing type
tufted 1/8"

Construction
3-ply cut pile (saxony)

Pile composition
100% PA 6 - Econyl®

Pile weight
2.000 g/m² (+/-)

Total weight
2.800 g/m² (+/-)

Pile height
9,0 mm (+/-)

Total height
11,0 mm (+/-)

Size
400 cm

Classification
33 heavy commercial

Fire resistance
Cfl-S1



Rug



Wall-to-wall



Matera Primo 65532





Medina 65820

hand tufted look
luxurious
soft

Medina

Medina has a **playful rib effect that mimics the look of a hand-tufted carpet**. The collection has usage class 33, making it well suited to high-end residential and hospitality environments. Medina belongs between Almyra, Soneva, Matera, Matera Primo and Zalina as we use the same core yarn in production. Do 'Bora Bora', 'Wyoming' and 'Whale Bay' already sound familiar to you? That's no coincidence, they recur in every New Worlds collection.



Medina 65820



65811 - Bora Bora LRV 46,89



65820 - Walvis Bay LRV 36,40



65824 - Wyoming LRV 23,23



65840 - Oyster LRV 38,16



65842 - Lemur LRV 30,28



65847 - Misty Fjord LRV 25,52

Technical details

Manufacturing type
tufted 1/10"

Construction
2-ply cut pile (rib velvet)

Pile composition
100% PA 6 - SDN - Econyl®

Pile weight
1.950 g/m² (+/-)

Total weight
2.800 g/m² (+/-)

Pile height
11,5 mm (+/-)

Total height
13,0 mm (+/-)

Size
400 cm

Classification
33 heavy commercial

Fire resistance
Cfl-S1



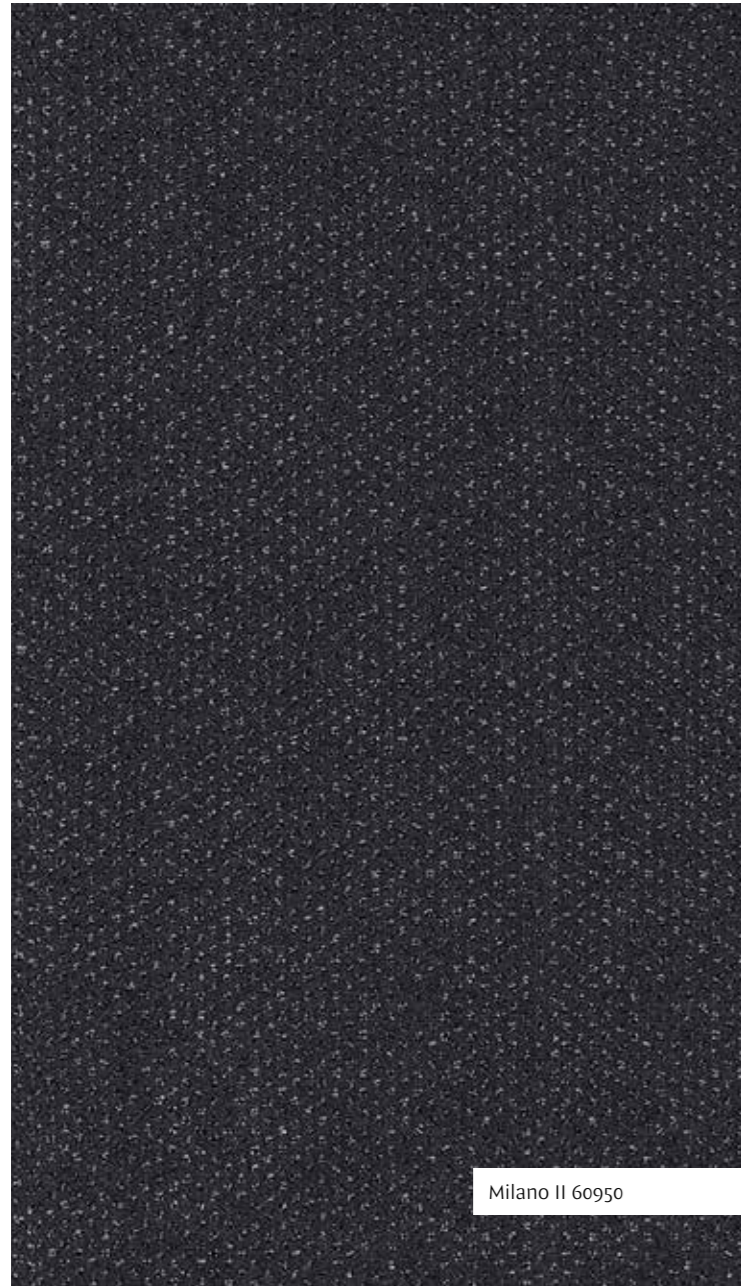
Rug



Wall-to-wall



Medina 65820



Milano II 60950

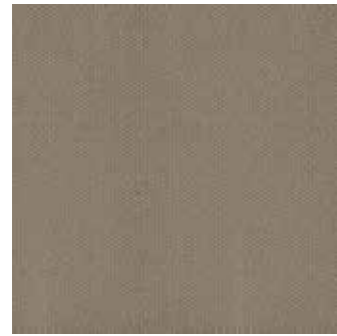
elegant
solid
timeless

Milano II

Milano II is **a timeless classic thanks to its pindot design**. The collection fits any interior, from commercial settings to the hospitality sector and office spaces. Milano II offers elegance and class with a modern touch. The solid design also makes the carpet colourfast, stain-resistant and soundabsorbing. The collection consists of 14 solution dyed colours.



Milano II 60960



60920 LRV 14,24



60938 LRV 7,91



60931 LRV 4,64



60980 LRV 4,60



60981 LRV 5,25



60960 LRV 4,49



60964 LRV 4,47



60976 LRV 6,83



60940 LRV 11,01



60922 LRV 11,65



60942 LRV 5,67



60925 LRV 5,83



60950 LRV 4,19



60951 LRV 3,74

Technical details

Manufacturing type
tufted 1/10"

Construction
coc cut pile

Pile composition
100% PA 6 BCF

Pile weight
800 g/m² (+/-)

Total weight
4.450 g/m² (+/-)

Pile height
4,5 mm (+/-)

Total height
7,0 mm (+/-)

Size
50 x 50 cm

Classification
33 heavy commercial

Fire resistance
Bfl-S1



 Carpet tile

 Wall-to-wall



Milano II 60950



Oak 59432

durable
 organic look
 wood effect

Oak

Oak **brings nature into any interior.** We got the idea for this collection from popular wooden floors. We incorporated the beauty of nature into a wood-effect carpet plank. Yes, a plank, not a standard tile. The plank shape emphasises the natural look of the carpet. In addition to being unique, Oak is also sustainable. The collection is made from regenerated ECONYL® yarn. This unique floor concept lets interior designers indulge themselves. Oak is suitable for commercial use. Thanks to its organic and warm appearance, it is a winner in public spaces. It is equally suitable for a lobby, entrance hall or town hall.



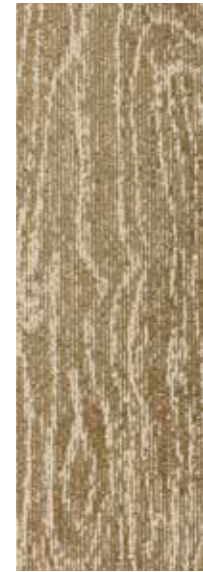
Oak 59432



59410 LRV 24,21



59411 LRV 21,18



59420 LRV 18,54



59423 LRV 8,88



59425 LRV 8,55



59432 LRV 5,98



59434 LRV 5,30



59441 LRV 13,43



59442 LRV 7,09



59450 LRV 6,12



59440 LRV 12,74

Technical details

Manufacturing type
tufted 1/10"

Construction
structured loop pile

Pile composition
100% PA 6 - Econyl®

Pile weight
800 g/m² (+/-)

Total weight
4.550 g/m² (+/-)

Pile height
5,0 mm (+/-)

Total height
8,0 mm (+/-)

Size
25 x 100 cm

Classification
33 heavy commercial

Fire resistance
Bfl-S1

Pattern repeat
203 x 250 cm



ECONYL®
ENDLESS POSSIBILITIES

Plank tile





functional
shaggy
texture

Opal

Opal has a **residential quality but is easily at home in commercial spaces**. The structured yarn creates a playful character for commercial settings. In addition, the shaggy look of Opal makes the carpet ideal for cutting as a loose carpet. The collection is available in 9 warm colours, ranging from cream to dark brown.





46110

LRV 54,74



46111

LRV 17,72



46120

LRV 31,18



46122

LRV 19,64



46124

LRV 15,33



46130

LRV 15,78



46132

LRV 3,49



46142

LRV 10,75



46155

LRV 3,08

Technical details

Manufacturing type
tufted 5/16"

Construction
shaggy

Pile composition
100% PA

Pile weight
800 g/m² (+/-)

Total weight
1.600 g/m² (+/-)

Pile height
20 mm (+/-)

Total height
22 mm (+/-)

Size
400 cm

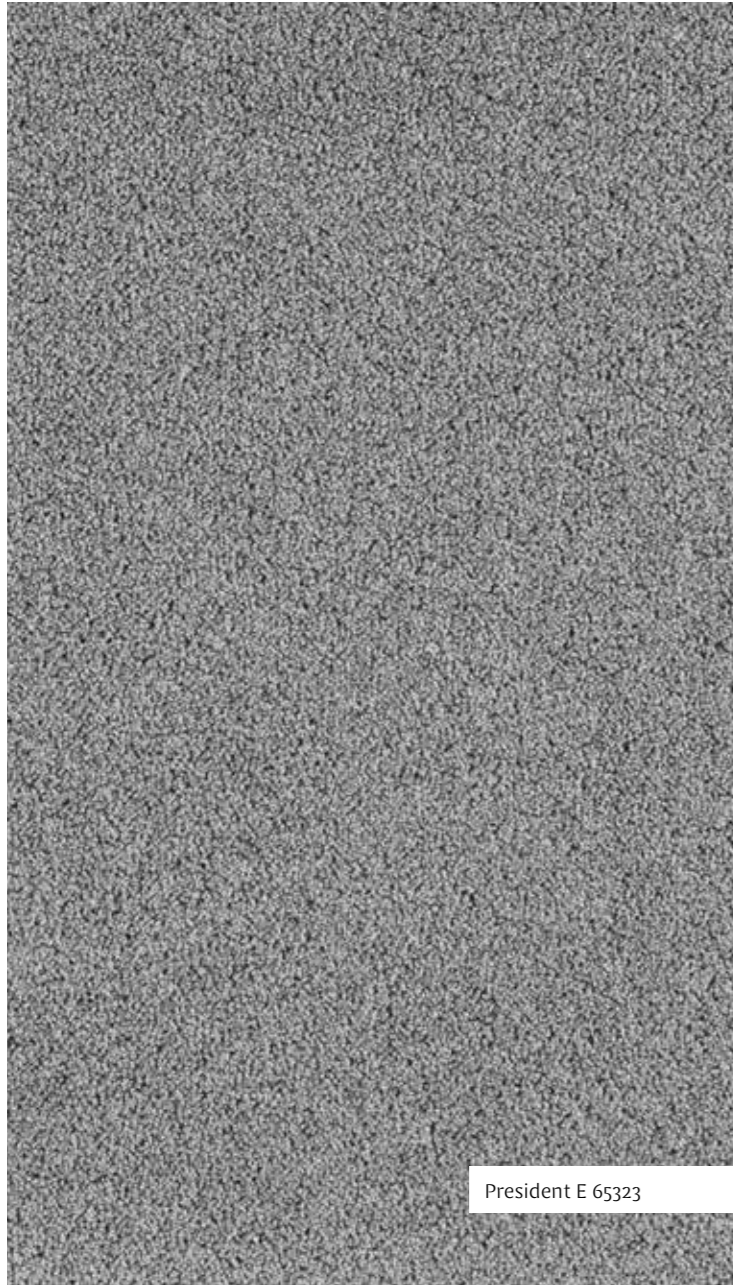
Classification
22+ heavy domestic

Fire resistance
Cfl-S1

 Wall-to-wall



Opal 41620



President E 65323

result-oriented
solid
sustainable

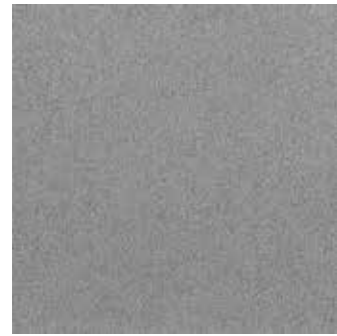
President E

President E **combines durability with superior quality.** The updated colour palette makes interesting designs whilst the structure creates an elegant look. President E is made from Solution Dyed Nylon and is the standard for floor coverings in both commercial and residential areas.

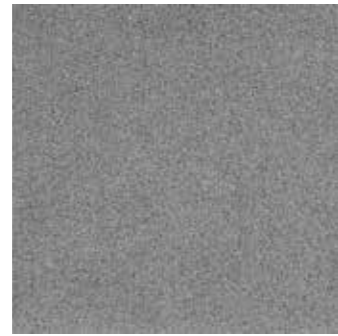
The frisé cut pile creates a neat finish and interesting look without sacrificing on performance. President E is made of 100% regenerable ECONYL® yarn. Choose from 17 contemporary colours.



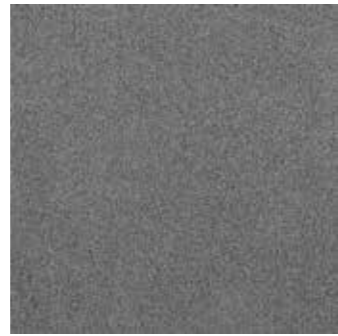
President E 65323



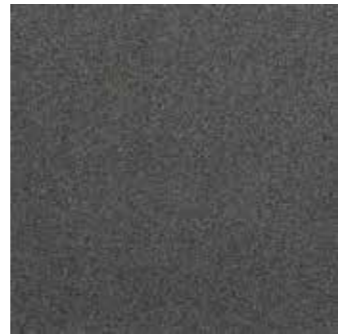
65310 LRV 22,25



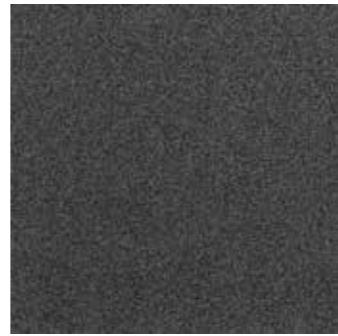
65323 LRV 17,72



65340 LRV 14,48



65341 LRV 9,22



65346 LRV 10,14



65332 LRV 6,55



65350 LRV 4,46



65351 LRV 3,50



65345 LRV 4,73



65344 LRV 5,88



65360 LRV 7,69



65320 LRV 17,76



65363 LRV 7,97



65370 LRV 10,65



65338 LRV 12,43



65349 LRV 13,13



65322 LRV 11,88



Technical details

Manufacturing type
tufted 1/10"

Construction
3-ply cut pile

Pile composition
100% PA 6 heatset - Econyl®

Pile weight
1.300 g/m² (+/-)

Total weight
4.800 g/m² (+/-)

Pile height
5,5 mm (+/-)

Total height
8,0 mm (+/-)

Size
50 x 50 cm

Classification
33 heavy commercial

Fire resistance
Bfl-S1



ECONYL®
ENDLESS POSSIBILITIES

Carpet tile

Wall-to-wall



Relined 6447073

contrast
striped design
versatile

Relined

Relined adds something extra to any office space. **The design with soft linear contrast creates an interesting and contemporary look.** The collection fits perfectly in office environments, the hospitality sector and in public spaces. Mix and match Relined with the Cobalt SDN uni colours to design a unique flooring concept.

The collection consists of 14 playful colour options ranging from greige to vibrant shades. Relined is designed with high-quality, durable materials that promote user well-being through good comfort underfoot and quiet acoustics.



Wall-to-wall
Relined 6447073



6444110 LRV 24,25



6443120 LRV 16,94



6443233 LRV 5,22



6443230 LRV 5,96



6448038 LRV 7,54



6446063 LRV 5,76



6446061 LRV 6,75



6446140 LRV 13,06



6447073 LRV 7,98



6444541 LRV 14,21



6444441 LRV 16,32



6445042 LRV 8,52



6445142 LRV 6,83



6445550 LRV 4,19

Technical details

Manufacturing type
tufted 1/10"

Construction
structured loop pile

Pile composition
100% PA 6

Pile weight
600 g/m² (+/-)

Total weight
4.300 g/m² (+/-)

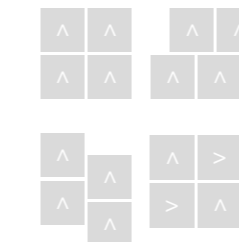
Pile height
4,0 mm (+/-)

Total height
7,0 mm (+/-)

Size
50 x 50 cm

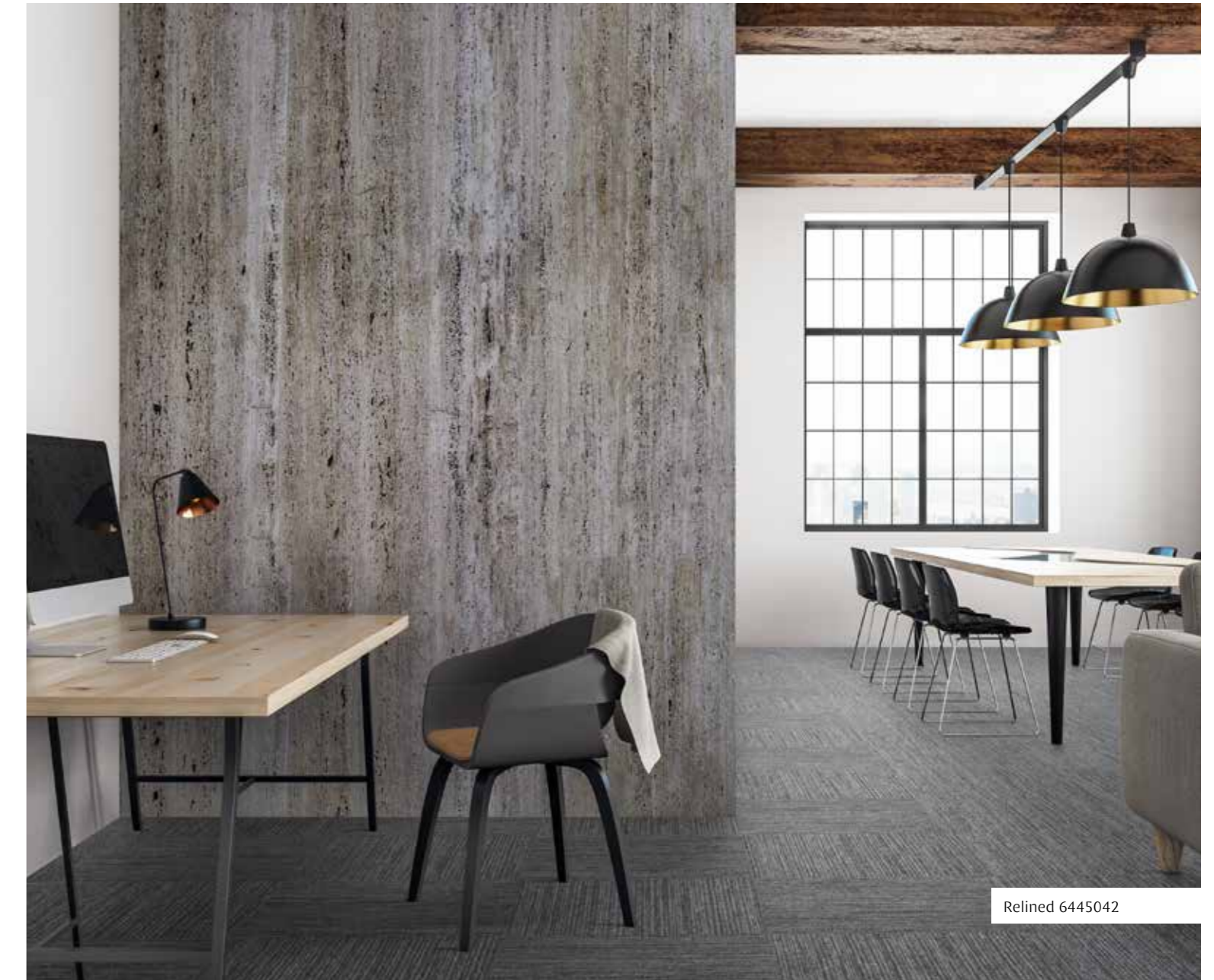
Classification
33 heavy commercial

Fire resistance
Bfl-S1



 Carpet tile

 Wall-to-wall



Relined 6445042



Shoreline 65022

expressive
natural
texture

Shoreline

Shoreline is **the ecological variant of Expression**. The ECONYL® yarn makes this collection a sustainable gem. Like Expression, Shoreline is daring and expressive. The ship's wood or paintbrush pattern catches the eye and holds the attention. The pattern on the carpet creates an interesting floor concept. Shoreline consists of 12 colour options, ranging from warm, natural tones to some fresh, bright colours.



Shoreline 65022
Shoreline 65070





65020 LRV 24,42



65021 LRV 21,86



65022 LRV 13,66



65030 LRV 7,84



65038 LRV 11,77



65040 LRV 23,88



65041 LRV 17,57



65042 LRV 12,40



65050 LRV 7,57



65060 LRV 11,09



65066 LRV 11,42



65070 LRV 10,50

Technical details

Manufacturing type
tufted 1/10"

Construction
structured loop pile

Pile composition
100% PA 6 - Econyl®

Pile weight
650 g/m² (+/-)

Total weight
4.400 g/m² (+/-)

Pile height
4,0 mm (+/-)

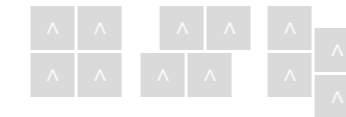
Total height
7,0 mm (+/-)

Size
50 x 50 cm

Classification
33 heavy commercial

Fire resistance
Bfl-S1

Pattern repeat
249 x 278 cm



ECONYL®
ENDLESS POSSIBILITIES

 Carpet tile

 Wall-to-wall



Shoreline 65021
President E 65350



Soneva 62040

durable
silky soft
velvet

Soneva

Soneva takes **softness and luxury to the next level**. This velvet carpet with a soft touch feels wonderful under your feet. Soneva is also an ecological choice; it is made from 100% regenerated ECONYL® nylon yarn. This means you are choosing luxury and sustainability. Despite its softness, Soneva doesn't compromise on performance thanks to the resilient two-ply solution dyed yarn. Choose from 12 timeless colours to take any commercial flooring project to the next level.



Soneva 62040



62010 - Polar Bear LRV 56,96



62011 - Bora Bora LRV 46,89



62020 - Walvis Bay LRV 36,40



62022 - Gobi Desert LRV 29,45



62024 - Wyoming LRV 24,23



62040 - Oyster LRV 38,16



62041 - Nordic Stone LRV 45,48



62042 - Lemur LRV 30,28



62043 - Patagonia LRV 22,31



62044 - Koala LRV 13,62



62045 - Lava Beach LRV 6,53



62047 - Misty Fjord LRV 25,52

Technical details

Manufacturing type
tufted 1/10"

Construction
2-ply saxony

Pile composition
100% PA 6 - SDN - Econyl®

Pile weight
1.600 g/m² (+/-)

Total weight
2.400 g/m² (+/-)

Pile height
8,5 mm (+/-)

Total height
10,0 mm (+/-)

Size
400 - 500 cm

Classification
33 heavy commercial

Fire resistance
Cfl-S1



 Rug

 Wall-to-wall



Soneva 62024





edgy
original
random pattern

Urban Textures

Urban Textures has a **special criss-cross pattern** that you can use in all directions. The collection makes a statement in a hospitality setting as well as in office rooms. Colour outside the lines with the original design from Urban Textures. A bold yet ecological choice thanks to the regenerable ECONYL® yarn. Urban Textures consists of 13 neutral colours.







64920 LRV 24,42



64921 LRV 21,86



64922 LRV 13,66



64930 LRV 7,84



64938 LRV 11,77



64940 LRV 23,88



64941 LRV 17,57



64942 LRV 12,40



64950 LRV 7,57



64960 LRV 11,09



64966 LRV 11,42



64970 LRV 10,50

Technical details

Manufacturing type
tufted 1/10"

Construction
structured loop pile

Pile composition
100% PA 6 - Econyl®

Pile weight
600 g/m² (+/-)

Total weight
4.300 g/m² (+/-)

Pile height
3,5 mm (+/-)

Total height
6,5 mm (+/-)

Size
50 x 50 cm

Classification
33 heavy commercial

Fire resistance
Bfl-S1

Pattern repeat
244 x 200 cm



 Carpet tile

 Wall-to-wall



Urban Textures 64940
Urban Textures 64970



Vintage Felina 59820

artistic
patchwork
printed

Vintage

Vintage is perhaps one of Tapibel's **most original collections**. The artistic patchwork prints create a warm atmosphere. The sustainable ECONYL® carpet is originally made white and is then printed with ChromoJet technology. Dare to think outside the box and design your own unique floor concept. Each room can tell its own story using the three unique Vintage collection patterns:

Felina

A criss-cross pattern that closely resembles typical patchwork.

Firenze

A static pattern with accents of columns from ancient Florence.

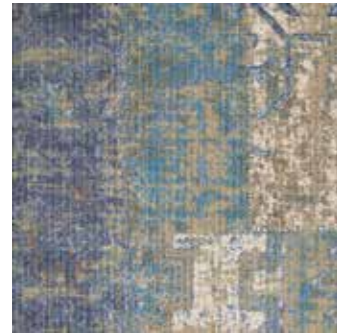
Ferrara

A calmer weave pattern with bright colour combinations.

The three patterns are available in six coloured prints that you can mix and match.



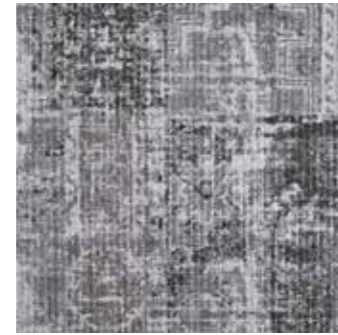
Vintage Felina 59820



Felina 59820 LRV 23,16



Felina 59840 LRV 17,71



Felina 59842 LRV 13,90



Felina 59871 LRV 21,18



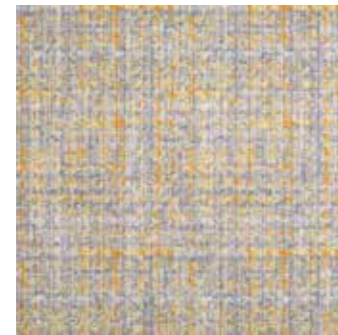
Felina 59884 LRV 20,80



Felina 59899 LRV 21,63



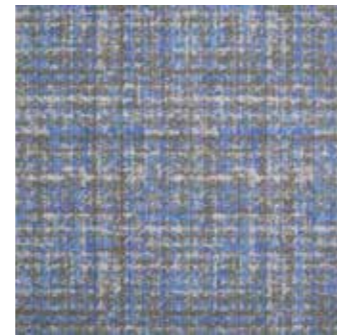
Ferrara 59911 LRV 24,35



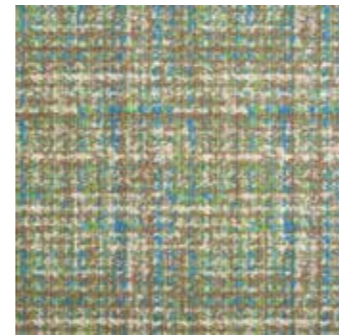
Ferrara 59941 LRV 31,39



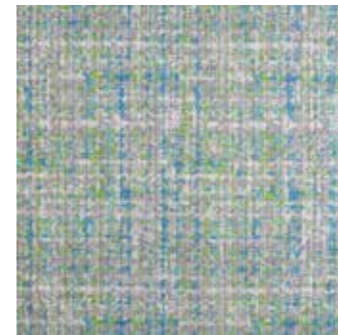
Ferrara 59960 LRV 23,77



Ferrara 59962 LRV 21,65



Ferrara 59970 LRV 22,61



Ferrara 59976 LRV 25,79



Firenze 60020 LRV 27,64



Firenze 60040 LRV 29,05



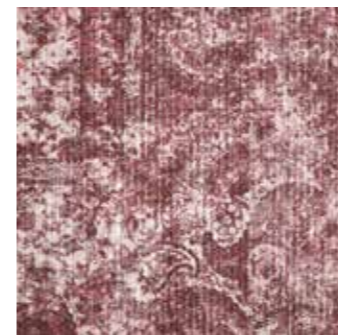
Firenze 60042 LRV 21,96



Firenze 60060 LRV 27,38



Firenze 60083 LRV 30,06



Firenze 60084 LRV 19,43



Vintage Firenze 60042

Technical details

Manufacturing type
tufted 1/10"

Construction
structured loop pile

Pile composition
100% PA 6 - Econyl®

Pile weight
900 g/m² (+/-)

Total weight
4.500 g/m² (+/-)

Pile height
5,0 mm (+/-)

Total height
7,0 mm (+/-)

Size
50 x 50 cm

Classification
33 heavy commercial

Fire resistance
Bfl-S1

Pattern repeat
Felina: 98,5 x 142,5 cm
Firenze: 98,5 x 98,5 cm



ECONYL®
ENDLESS POSSIBILITIES

 Carpet tile

 Wall-to-wall



Zalina 66638

budget-friendly
cosy
residential

Zalina

Zalina **combines affordable cosiness with a homely atmosphere.** The carpet does not look out of place in public areas, shops or exhibition stands either. The short-pile frisé collection consists of a mix of ten striking and neutral colours. Its softness and beautiful lustre effect creates a comfortable feel.



Zalina 66638



66611

LRV 42,65



66620

LRV 29,05



66641

LRV 24,78



66631

LRV 23,04



66639

LRV 30,49



66638

LRV 24,61



66633

LRV 20,79



66671

LRV 20,60



66665

LRV 17,35



66663

LRV 25,21

Technical details

Manufacturing type
tufted 1/8"

Construction
2-ply cut pile

Pile composition
100% PA 6 - Econyl®

Pile weight
1.250 g/m² (+/-)

Total weight
2.300 g/m² (+/-)

Pile height
9,5 mm (+/-)

Total height
10,0 mm (+/-)

Size
400 cm

Classification
32 general commercial

Fire resistance
Cfl-S1

ECONYL®
ENDLESS POSSIBILITIES



Rug



Wall-to-wall



Zalina 66663



Technical details carpet tiles

Collection	Page	Manufacturing type	Pile composition	Secondary backing	Pile weight	Total weight	Pile height	Total height	Tuft density	Size
Artisan Tweed	32	tufted 1/10"	100% PA 6 - Econyl®	GREENBASE modified bitumen	650 (+/-) g/m ²	4.400 (+/-) g/m ²	4,0 (+/-) mm	7,0 (+/-) mm	192.000 (+/-) /m ²	50 x 50 cm
Belflor SDN Luxe	46	tufted 1/8"	100% PA 6	GREENBASE modified bitumen	1.250 (+/-) g/m ²	4.800 (+/-) g/m ²	9,5 (+/-) mm	10,5 (+/-) mm	144.000 (+/-) /m ²	50 x 50 cm
Cobalt Creations	54	tufted 1/10"	100% PA 6	GREENBASE modified bitumen	550 (+/-) g/m ²	4.300 (+/-) g/m ²	3,0 (+/-) mm	6,0 (+/-) mm	164.000 (+/-) /m ²	50 x 50 cm
Cobalt SDN	58	tufted 1/10"	100% PA 6	GREENBASE modified bitumen	550 (+/-) g/m ²	4.300 (+/-) g/m ²	3,0 (+/-) mm	6,0 (+/-) mm	164.000 (+/-) /m ²	50 x 50 cm
Coral (Lines)	64	tufted 1/10"	100% PA 6 BCF	GREENBASE modified bitumen	485 (+/-) g/m ²	4.200 (+/-) g/m ²	3,0 (+/-) mm	5,5 (+/-) mm	175.000 (+/-) /m ²	50 x 50 cm
Country SDN	68	ultratuft 1/10"	100% PA 6	GREENBASE modified bitumen	550 (+/-) g/m ²	4.100 (+/-) g/m ²	1,0 (+/-) mm	5,5 (+/-) mm	164.000 (+/-) /m ²	50 x 50 cm
Crossline	72	tufted 1/10"	100% PA 6	GREENBASE modified bitumen	650 (+/-) g/m ²	4.300 (+/-) g/m ²	4,0 (+/-) mm	7,0 (+/-) mm	191.000 (+/-) /m ²	50 x 50 cm
Diamond Art	76	tufted 1/10"	100% PA 6 - Econyl®	GREENBASE modified bitumen	650 (+/-) g/m ²	4.400 (+/-) g/m ²	4,0 (+/-) mm	7,0 (+/-) mm	192.000 (+/-) /m ²	50 x 50 cm
Diplomat	82	tufted 1/8"	100% PA - heatset	GREENBASE modified bitumen	1.150 (+/-) g/m ²	4.600 (+/-) g/m ²	5,5 (+/-) mm	8,0 (+/-) mm	146.000 (+/-) /m ²	50 x 50 cm
Earth	86	tufted 1/10"	100% PA 6 - Econyl®	GREENBASE modified bitumen	800 (+/-) g/m ²	4.550 (+/-) g/m ²	5,0 (+/-) mm	8,0 (+/-) mm	190.000 (+/-) /m ²	50 x 50 cm
Expression	90	tufted 1/10"	100% PA 6	GREENBASE modified bitumen	650 (+/-) g/m ²	4.300 (+/-) g/m ²	4,0 (+/-) mm	7,0 (+/-) mm	191.000 (+/-) /m ²	50 x 50 cm
Groove	96	tufted 1/10"	100% PA 6 - Econyl®	GREENBASE modified bitumen	580 (+/-) g/m ²	4.400 (+/-) g/m ²	3,5 (+/-) mm	6,5 (+/-) mm	155.000 (+/-) /m ²	50 x 50 cm
Groove Brick	100	tufted 1/10"	100% PA 6 - Econyl®	GREENBASE modified bitumen	620 (+/-) g/m ²	4.450 (+/-) g/m ²	4,0 (+/-) mm	7,0 (+/-) mm	190.000 (+/-) /m ²	50 x 50 cm
Groove Tones	104	tufted 1/10"	100% PA 6 - Econyl®	GREENBASE modified bitumen	580 (+/-) g/m ²	4.400 (+/-) g/m ²	3,5 (+/-) mm	6,5 (+/-) mm	155.000 (+/-) /m ²	50 x 50 cm
Grunge	108	tufted 1/10"	100% PA 6	GREENBASE modified bitumen	650 (+/-) g/m ²	4.300 (+/-) g/m ²	4,0 (+/-) mm	7,0 (+/-) mm	191.000 (+/-) /m ²	50 x 50 cm
Hexagon Art	112	tufted 1/10"	100% PA 6	GREENBASE modified bitumen	650 (+/-) g/m ²	4.300 (+/-) g/m ²	4,0 (+/-) mm	7,0 (+/-) mm	191.000 (+/-) /m ²	50 x 50 cm
Lisbon SDN	118	tufted 1/10"	100% PA 6 SDN	GREENBASE modified bitumen	700 (+/-) g/m ²	4.300 (+/-) g/m ²	4,5 (+/-) mm	7,0 (+/-) mm	198.750 (+/-) /m ²	50 x 50 cm
Milano II	136	tufted 1/10"	100% PA 6 BCF	GREENBASE modified bitumen	800 (+/-) g/m ²	4.450 (+/-) g/m ²	4,5 (+/-) mm	7,0 (+/-) mm	223.000 (+/-) /m ²	50 x 50 cm
Oak	140	tufted 1/10"	100% PA 6 - Econyl®	GREENBASE modified bitumen	800 (+/-) g/m ²	4.550 (+/-) g/m ²	5,0 (+/-) mm	8,0 (+/-) mm	190.000 (+/-) /m ²	25 x 100 cm

Classification	Comfort rating	Dimensional stability	Fire resistance	Thermal resistance	Sound absorption	Impact sound reduction	Light fastness	Rubbing fastness	Pattern repeat (W x H)
33	LC 1	≤ 0,2%	Bfl-S1 loose laid	0,072 m ² /K/W	0,15 α _w	26 dB ΔL _w 42 dB ΔL (1000 Hz)	≥ 7	≥ 5	
32	LC 5	≤ 0,2%	Bfl-S1 loose laid	0,122 m ² /K/W	0,20 α _w	25 dB ΔL _w 42 dB ΔL (1000 Hz)	≥ 7	≥ 5	
33	LC 2	≤ 0,2%	Bfl-S1 loose laid	0,070 m ² /K/W	0,15 α _w	24 dB ΔL _w 35 dB ΔL (1000 Hz)	8	4-5	
33	LC 2	≤ 0,2%	Bfl-S1 loose laid	0,064 m ² /K/W	0,15 α _w	24 dB ΔL _w 35 dB ΔL (1000 Hz)	8	4-5	
33	LC 1	≤ 0,2%	Bfl-S1 loose laid	0,066 m ² /K/W	0,15 α _w	23 dB ΔL _w 35 dB ΔL (1000 Hz)	≥ 8	≥ 4-5	
33	LC 1	≤ 0,2%	Bfl-S1 loose laid	0,064 m ² /K/W	0,15 α _w	21 dB ΔL _w 33 dB ΔL (1000 Hz)	8	4-5	
33	LC 1	≤ 0,2%	Bfl-S1 loose laid	0,072 m ² /K/W	0,15 α _w	26 dB ΔL _w 43 dB ΔL (1000 Hz)	8	4-5	206 x 172 cm
33	LC 1	≤ 0,2%	Bfl-S1 loose laid	0,072 m ² /K/W	0,15 α _w	26 dB ΔL _w 42 dB ΔL (1000 Hz)	≥ 7	≥ 5	203 x 167 cm
33	LC 4	≤ 0,2%	Bfl-S1 loose laid	0,086 m ² /K/W	0,15 α _w	26 dB ΔL _w 42 dB ΔL (1000 Hz)	≥ 7	≥ 5	
33	LC 2	≤ 0,2%	Bfl-S1 loose laid	0,100 m ² /K/W	0,20 α _w	27 dB ΔL _w 39 dB ΔL (1000 Hz)	≥ 7	≥ 5	405 x 250 cm
33	LC 1	≤ 0,2%	Bfl-S1 loose laid	0,066 m ² /K/W	0,15 α _w	25 dB ΔL _w 42 dB ΔL (1000 Hz)	≥ 6	4-5	249 x 278 cm
33	LC 2	≤ 0,2%	Bfl-S1 loose laid	0,057 m ² /K/W	0,15 α _w	24 dB ΔL _w 33 dB ΔL (1000 Hz)	6-7	4-5	
33	LC 2	≤ 0,2%	Bfl-S1 loose laid	0,057 m ² /K/W	0,15 α _w	24 dB ΔL _w 33 dB ΔL (1000 Hz)	6-7	4-5	
33	LC 1	≤ 0,2%	Bfl-S1 loose laid	0,066 m ² /K/W	0,15 α _w	25 dB ΔL _w 42 dB ΔL (1000 Hz)	≥ 6	4-5	203 x 111 cm
33	LC 1	≤ 0,2%	Bfl-S1 loose laid	0,066 m ² /K/W	0,15 α _w	25 dB ΔL _w 42 dB ΔL (1000 Hz)	≥ 6	4-5	203 x 167 cm
33	LC 2	≤ 0,2%	Bfl-S1 loose laid	0,068 m ² /K/W	0,15 α _w	28 dB ΔL _w 47 dB ΔL (1000 Hz)	8	4-5	
33	LC 2	≤ 0,2%	Bfl-S1 loose laid	0,068 m ² /K/W	0,20 α _w	29 dB ΔL _w 49 dB ΔL (1000 Hz)	≥ 6	≥ 4-5	
33	LC 2	≤ 0,2%	Bfl-S1 loose laid	0,100 m ² /K/W	0,20 α _w	27 dB ΔL _w 39 dB ΔL (1000 Hz)	≥ 7	≥ 5	203 x 250 cm

President E	148	tufted 1/10"	100% PA 6 heatset - Econyl®	GREENBASE modified bitumen	1.300 (+/-) g/m ²	4.800 (+/-) g/m ²	5,5 (+/-) mm	8,0 (+/-) mm	189.000 (+/-) /m ²	50 x 50 cm
Relined	152	tufted 1/10"	100% PA 6	GREENBASE modified bitumen	600 (+/-) g/m ²	4.300 (+/-) g/m ²	4,0 (+/-) mm	7,0 (+/-) mm	191.000 (+/-) /m ²	50 x 50 cm
Shoreline	156	tufted 1/10"	100% PA 6 - Econyl®	GREENBASE modified bitumen	650 (+/-) g/m ²	4.400 (+/-) g/m ²	4,0 (+/-) mm	7,0 (+/-) mm	192.000 (+/-) /m ²	50 x 50 cm
Urban Textures	168	tufted 1/10"	100% PA 6 - Econyl®	GREENBASE modified bitumen	600 (+/-) g/m ²	4.300 (+/-) g/m ²	3,5 (+/-) mm	6,5 (+/-) mm	192.000 (+/-) /m ²	50 x 50 cm
Vintage	174	tufted 1/10"	100% PA 6 - Econyl®	GREENBASE modified bitumen	900 (+/-) g/m ²	4.500 (+/-) g/m ²	5,0 (+/-) mm	7,0 (+/-) mm	191.000 (+/-) /m ²	50 x 50 cm

33	LC 4	≤ 0,2%	Bfl-S1 loose laid	0,073 m ² /K/W	0,25 α _w	29 dB ΔL _w 50 dB ΔL (1000 Hz)	≥ 7	≥ 5	
33	LC 1	≤ 0,2%	Bfl-S1 loose laid	0,066 m ² /K/W	0,15 α _w	25 dB ΔL _w 42 dB ΔL (1000 Hz)	≥ 6	4-5	
33	LC 1	≤ 0,2%	Bfl-S1 loose laid	0,072 m ² /K/W	0,15 α _w	26 dB ΔL _w 42 dB ΔL (1000 Hz)	≥ 7	≥ 5	249 x 278 cm
33	LC 1	≤ 0,2%	Bfl-S1 loose laid	0,072 m ² /K/W	0,15 α _w	26 dB ΔL _w 42 dB ΔL (1000 Hz)	≥ 7	≥ 5	244 x 200 cm
33	LC 2	≤ 0,2%	Bfl-S1 loose laid	0,068 m ² /K/W	0,15 α _w	26 dB ΔL _w 42 dB ΔL (1000 Hz)	≥ 5-6	≥ 3-4	Felina: 98,5 x 142,5 cm Firenze: 98,5 x 98,5 cm

Technical details wall-to-wall

Collection	Page	Manufacturing type	Pile composition	Secondary backing	Pile weight	Total weight	Pile height	Total height	Tuft density	Size
Almyra	26	tufted 1/10"	100% PA 6 - SDN - Econyl®	action backing	1.200 (+/-) g/m ²	2.100 (+/-) g/m ²	6,5 (+/-) mm	8,0 (+/-) mm	210.000 (+/-) /m ²	400-500 cm
Artisan Tweed	32	tufted 1/10"	100% PA 6 - Econyl®	action backing	650 (+/-) g/m ²	1.950 (+/-) g/m ²	4,0 (+/-) mm	6,0 (+/-) mm	192.000 (+/-) /m ²	400 cm
Aztec Weave	38	tufted 1/10"	100% PA 6 (nylon)	action backing	600 (+/-) g/m ²	1.885 (+/-) g/m ²	4,0 (+/-) mm	7,0 (+/-) mm	173.000 (+/-) /m ²	400 cm
Belflor SDN	42	tufted 1/8"	100% PA 6	action backing	810 (+/-) g/m ²	1.900 (+/-) g/m ²	5,5 (+/-) mm	7,0 (+/-) mm	123.500 (+/-) /m ²	400 cm
Belflor SDN Luxe	46	tufted 1/8"	100% PA 6	action backing	1.250 (+/-) g/m ²	2.300 (+/-) g/m ²	9,5 (+/-) mm	10,0 (+/-) mm	144.000 (+/-) /m ²	400 cm
Cameo	50	tufted 1/10"	100% PA 6 (nylon)	action backing	600 (+/-) g/m ²	2.000 (+/-) g/m ²	3,5 (+/-) mm	6,5 (+/-) mm	190.000 (+/-) /m ²	400 cm
Cobalt SDN	58	tufted 1/10"	100% PA 6	action backing	550 (+/-) g/m ²	1.825 (+/-) g/m ²	3,0 (+/-) mm	5,5 (+/-) mm	164.000 (+/-) /m ²	400 cm
Coral (lines)	64	tufted 1/10"	100% PA 6 BCF	action backing	485 (+/-) g/m ²	1.600 (+/-) g/m ²	3,0 (+/-) mm	5,0 (+/-) mm	175.000 (+/-) /m ²	400 cm
Crossline	72	tufted 1/10"	100% PA 6	action backing	650 (+/-) g/m ²	1.950 (+/-) g/m ²	4,0 (+/-) mm	6,5 (+/-) mm	191.000 (+/-) /m ²	400 cm
Diamond Art	76	tufted 1/10"	100% PA 6 - Econyl®	action backing	650 (+/-) g/m ²	1.950 (+/-) g/m ²	4,0 (+/-) mm	6,0 (+/-) mm	192.000 (+/-) /m ²	400 cm
Diplomat	82	tufted 1/8"	100% PA 6 - heatset	action backing	1.150 (+/-) g/m ²	2.250 (+/-) g/m ²	5,5 (+/-) mm	7,5 (+/-) mm	148.000 (+/-) /m ²	400 cm
Earth	86	tufted 1/10"	100% PA 6 - Econyl®	action backing	800 (+/-) g/m ²	2.000 (+/-) g/m ²	5,0 (+/-) mm	7,5 (+/-) mm	190.000 (+/-) /m ²	400 cm
Expression	90	tufted 1/10"	100% PA 6	action backing	650 (+/-) g/m ²	1.950 (+/-) g/m ²	4,0 (+/-) mm	6,5 (+/-) mm	191.000 (+/-) /m ²	400 cm
Groove	96	tufted 1/10"	100% PA 6 - Econyl®	action backing	580 (+/-) g/m ²	1.850 (+/-) g/m ²	3,5 (+/-) mm	6,0 (+/-) mm	155.000 (+/-) /m ²	400 cm
Groove Brick	100	tufted 1/10"	100% PA 6 - Econyl®	action backing	620 (+/-) g/m ²	1.900 (+/-) g/m ²	4,0 (+/-) mm	6,5 (+/-) mm	190.000 (+/-) /m ²	400 cm
Groove Tones	104	tufted 1/10"	100% PA 6 - Econyl®	action backing	580 (+/-) g/m ²	1.850 (+/-) g/m ²	3,5 (+/-) mm	6,0 (+/-) mm	155.000 (+/-) /m ²	400 cm
Grunge	108	tufted 1/10"	100% PA 6	action backing	650 (+/-) g/m ²	1.950 (+/-) g/m ²	4,0 (+/-) mm	6,5 (+/-) mm	191.000 (+/-) /m ²	400 cm
Hexagon Art	112	tufted 1/10"	100% PA 6	action backing	650 (+/-) g/m ²	1.950 (+/-) g/m ²	4,0 (+/-) mm	6,5 (+/-) mm	191.000 (+/-) /m ²	400 cm
Lisbon SDN	118	tufted 1/10"	100% PA 6 BCF	action backing	700 (+/-) g/m ²	1.850 (+/-) g/m ²	4,5 (+/-) mm	6,5 (+/-) mm	198.750 (+/-) /m ²	400 cm

Classification	Comfort rating	Fire resistance	Thermal resistance	Sound absorption	Impact sound reduction	Light fastness	Rubbing fastness	Pattern repeat (W x H)
33	LC 4	Cfl-S1	0,091 m ² /K/W	0,20 α _w	28 dB ΔL _w 45 dB ΔL (1000 Hz)	7-8	≥ 5	
33	LC 1	Bfl-S1	0,078 m ² /K/W	0,15 α _w	25 dB ΔL _w	≥ 7	≥ 5	
33	LC 1	Bfl-S1	0,078 m ² /K/W	0,20 α _w	25 dB ΔL _w 43 dB ΔL (1000 Hz)	8	4-5	
32	LC 3	Cfl-S1	0,100 m ² /K/W	0,20 α _w	22 dB ΔL _w 32 dB ΔL (1000 Hz)	≥ 7	≥ 5	
32	LC 5	Cfl-S1	0,120 m ² /K/W	0,25 α _w	26 dB ΔL _w 46 dB ΔL (1000 Hz)	≥ 7	≥ 5	
33	LC 1	Bfl-S1	0,078 m ² /K/W	0,20 α _w	25 dB ΔL _w 43 dB ΔL (1000 Hz)	8	4-5	
33	LC 1	Bfl-S1	0,065 m ² /K/W	0,20 α _w	26 dB ΔL _w 44 dB ΔL (1000 Hz)	8	4-5	
33	LC 1	Cfl-S1	0,065 m ² /K/W		20 dB ΔL _w	≥ 8	≥ 4-5	
32	LC 1	Bfl-S1	0,086 m ² /K/W	0,20 α _w	25 dB ΔL _w 44 dB ΔL (1000 Hz)	8	4-5	206 x 172 cm
33	LC 1	Bfl-S1	0,078 m ² /K/W	0,15 α _w	25 dB ΔL _w 42 dB ΔL (1000 Hz)	≥ 7	≥ 5	203 x 167 cm
33	LC 4	Cfl-S1	0,092 m ² /K/W	0,25 α _w	26 dB ΔL _w 45 dB ΔL (1000 Hz)	≥ 7	≥ 5	
32	LC 2	Cfl-S1	0,119 m ² /K/W		24 dB ΔL _w	≥ 7	≥ 5	405 x 250 cm
32	LC 1	Bfl-S1	0,078 m ² /K/W		22 dB ΔL _w	≥ 6	≥ 4-5	249 x 278 cm
33	LC 2	Bfl-S1	0,066 m ² /K/W	0,15 α _w	23 dB ΔL _w 35 dB ΔL (1000 Hz)	6-7	4-5	
33	LC 2	Bfl-S1	0,066 m ² /K/W	0,15 α _w	23 dB ΔL _w 35 dB ΔL (1000 Hz)	6-7	4-5	
33	LC 2	Bfl-S1	0,066 m ² /K/W	0,15 α _w	23 dB ΔL _w 35 dB ΔL (1000 Hz)	6-7	4-5	
32	LC 1	Bfl-S1	0,078 m ² /K/W		22 dB ΔL _w	≥ 6	≥ 4-5	203 x 111 cm
32	LC 1	Bfl-S1	0,078 m ² /K/W		22 dB ΔL _w	≥ 6	≥ 4-5	203 x 167 cm
33	LC 2	Bfl-S1	0,076 m ² /K/W	0,20 α _w	24 dB ΔL _w 40 dB ΔL (1000 Hz)	8	4-5	

Matera	122	tufted 1/8"	100% PA 6 - Econyl®	action backing	1.600 (+/-) g/m ²	2.400 (+/-) g/m ²	8,0 (+/-) mm	10,0 (+/-) mm	147.200 (+/-) /m ²	400 cm
Matera Primo	126	tufted 1/8"	100% PA 6 - Econyl®	action backing	2.000 (+/-) g/m ²	2.800 (+/-) g/m ²	9,0 (+/-) mm	11,0 (+/-) mm	172.800 (+/-) /m ²	400 cm
Medina	132	tufted 1/10"	100% PA 6 - SDN - Econyl®	action backing	1.950 (+/-) g/m ²	2.800 (+/-) g/m ²	11,5 (+/-) mm	13,0 (+/-) mm	240.000 (+/-) /m ²	400 cm
Milano II	136	tufted 1/10"	100% PA 6 BCF	action backing	800 (+/-) g/m ²	2.050 (+/-) g/m ²	4,5 (+/-) mm	6,5 (+/-) mm	223.000 (+/-) /m ²	400 cm
Opal	144	tufted 5/16"	100% PA	action backing	800 (+/-) g/m ²	1.600 (+/-) g/m ²	20,0 (+/-) mm	22,0 (+/-) mm	55.000 (+/-) /m ²	400 cm
President E	148	tufted 1/10"	100% PA 6 - Econyl® - heatset	action backing	1.300 (+/-) g/m ²	2.400 (+/-) g/m ²	5,5 (+/-) mm	7,0 (+/-) mm	189.000 (+/-) /m ²	400 cm
Refined	152	tufted 1/10"	100% PA	action backing	600 (+/-) g/m ²	1.900 (+/-) g/m ²	4,0 (+/-) mm	6,5 (+/-) mm	191.000 (+/-) /m ²	400 cm
Shoreline	156	tufted 1/10"	100% PA 6 - Econyl®	action backing	650 (+/-) g/m ²	1.950 (+/-) g/m ²	4,0 (+/-) mm	6,0 (+/-) mm	192.000 (+/-) /m ²	400 cm
Soneva	162	tufted 1/10"	100% PA 6 - SDN - Econyl®	action backing	1.600 (+/-) g/m ²	2.400 (+/-) g/m ²	8,5 (+/-) mm	10,0 (+/-) mm	220.000 (+/-) /m ²	400-500 cm
Urban Textures	168	tufted 1/10"	100% PA 6 - Econyl®	action backing	600 (+/-) g/m ²	1.900 (+/-) g/m ²	4,0 (+/-) mm	6,0 (+/-) mm	192.000 (+/-) /m ²	400 cm
Vintage	174	tufted 1/10"	100% PA 6 - Econyl®	action backing	900 (+/-) g/m ²	1.950 (+/-) g/m ²	5,0 (+/-) mm	6,5 (+/-) mm	191.000 (+/-) /m ²	400 cm
Zalina	178	tufted 1/8"	100% PA 6 - Econyl®	action backing	1.250 (+/-) g/m ²	2.300 (+/-) g/m ²	9,5 (+/-) mm	10,0 (+/-) mm	149.000 (+/-) /m ²	400 cm

33	LC 5	Cfl-S1	0,125 m ² /K/W	0,20 α _w	28 dB ΔL _w 47 dB ΔL (1000 Hz)	≥ 7	≥ 5	
33	LC 5	Cfl-S1	0,135 m ² /K/W	0,25 α _w	31 dB ΔL _w 51 dB ΔL (1000 Hz)	≥ 7	≥ 5	
33	LC 4	Cfl-S1	0,114 m ² /K/W	0,20 α _w	28 dB ΔL _w 45 dB ΔL (1000 Hz)	≥ 7	≥ 5	
33	LC 2	Bfl-S1	0,071 m ² /K/W	0,20 α _w	26 dB ΔL _w 45 dB ΔL (1000 Hz)	≥ 6	≥ 4-5	
22+	LC 3	Cfl-S1			25 dB ΔL _w	≥ 7	≥ 4-5	
33	LC 4	Bfl-S1	0,083 m ² /K/W	0,25 α _w	26 dB ΔL _w 45 dB ΔL (1000 Hz)	≥ 7	≥ 5	
32	LC 1	Bfl-S1	0,078 m ² /K/W		22 dB ΔL _w	≥ 6	≥ 4-5	
33	LC 1	Bfl-S1	0,078 m ² /K/W	0,15 α _w	25 dB ΔL _w	≥ 7	≥ 5	249 x 278 cm
33	LC 5	Cfl-S1	0,114 m ² /K/W	0,25 α _w	30 dB ΔL _w 46 dB ΔL (1000 Hz)	7-8	≥ 5	
33	LC 1	Bfl-S1	0,078 m ² /K/W	0,15 α _w	25 dB ΔL _w	≥ 7	≥ 5	244 x 200 cm
33	LC 2	Cfl-S1			23 dB ΔL _w	≥ 5-6	≥ 3-4	Felina: 98,5 x 142,5 cm Firenze: 98,5 x 98,5 cm
32	LC 5	Cfl-S1	0,120 m ² /K/W	0,25 α _w	26 dB ΔL _w 46 dB ΔL (1000 Hz)	≥ 7	≥ 5	

Technical details rugs

Collection	Page	Manufacturing type	Construction	Pile composition	Dye method	Primary backing	Secondary backing
Almyra	26	tufted 1/10"	2-ply cut pile	100% PA 6 - Econyl®	solution dyed	woven	100% recycled PES antislip
Matera Primo	126	tufted 1/8"	cut pile (frisé)	100% PA 6 - Econyl® - heatset	solution dyed	woven	100% recycled PES antislip
Medina	132	tufted 1/10"	2-ply cut pile rib velvet	100% PA 6 - Econyl®	solution dyed	woven	100% recycled PES antislip
Soneva	162	tufted 1/10"	2-ply cut pile (frisé)	100% PA 6 - Econyl®	solution dyed	woven	100% recycled PES antislip
Zalina	178	tufted 1/8"	2-ply cut pile	100% PA 6 - Econyl®	solution dyed	woven	100% recycled PES antislip

Pile weight	Pile height	Tuft density	Classification	Comfort rating	Fire resistance	Light fastness	Rubbing fastness
1.200 (+/-) g/m ²	6,5 (+/-) mm	210.000 (+/-) /m ²	33	LC 4	Cfl-S1	7-8	≥ 5
2.000 (+/-) g/m ²	9,0 (+/-) mm	172.800 (+/-) /m ²	33	LC 5	Cfl-S1	≥ 7	≥ 5
1.950 (+/-) g/m ²	11,5 (+/-) mm	240.000 (+/-) /m ²	33	LC 5	Cfl-S1	7-8	≥ 5
1.600 (+/-) g/m ²	8,5 (+/-) mm	220.000 (+/-) /m ²	33	LC 5	Cfl-S1	7-8	≥ 5
1.250 (+/-) g/m ²	9,5 (+/-) mm	146.000 (+/-) /m ²	32	LC 5	Cfl-S1	≥ 7	≥ 5



www.tapibel.be - sales@tapibel.be

Industrielaan 4 - Nolimpark 1319

B-3900 Pelt - Belgium

Tel : +32 11 80 48 50

The logo for Tapibel features the brand name in a white, stylized, cursive font. A thick white horizontal line arches over the top of the letters. Below the brand name, the tagline "Your carpet, our tradition" is written in a smaller, clean, sans-serif font.

Tapibel
Your carpet, our tradition